

DIRECTOR'S NOTES

This is one of my favorite “Christmas plays” and one that will probably, in some way, remind every audience member of their own family. The holidays seem to bring out the best and worst in families, don't they?

Every family has their own stories. Two of the classics from the Dragoo family are the time – back in the 1960s – when an aunt who'd just married into the family gave my Uncle Boo a pair of socks. In her eagerness to please with the perfect gift, she had forgotten – or maybe didn't know – that dear Boo was a double-amputee and had no legs! And then there was the time back in the mid- to late- '60s when little Billy was asked to say grace over Christmas dinner. After everyone dutifully bowed their head, I proceeded to sing Jingle Bells. I don't remember doing it, but I remember suffering the humiliation of reliving the story at every year's gathering. Until the day she died, it was my Aunt Helen's favorite holiday tale.

When Alan Ayckbourn wrote *Season's Greetings* back in 1980, he wanted to write about the cheery but cynical family gatherings he remembered from his own childhood. As he has said, “I wanted to write about log fires, Christmas trees, excited children's faces, candle-light, the holly and the mistletoe. The Bunkers' home has all these. It's comfy and cosy and it swarms with children. Not the smaller, shorter variety though who remain unseen, usually lurking just out of sight in muddy gum boots. But the taller older ones are on view. Those currently going through the 'awkward' age, the twenty-five to seventy year olds— they're all there. Fighting over their toys, clamoring for attention, bullying, sneaking and crying, then kissing and making up and generally getting far too overexcited, as they always do every year at Christmas. *Season's Greetings* is a play about love and about, as Rachel puts it, how unfair it all is. It's about success and failure. And jealousy and self-deception. And greed and envy and lust and gluttony. Just an average family Christmas. And looming over the proceedings in true pantomime spirit the shadows of two eccentric uncles, the good angel and the bad one...”

Charles Dickens wrote in *A Christmas Carol*: “I will honour Christmas in my heart and try to keep it all the year.” But if he'd seen Alan Ayckbourn's *Season's Greetings* he might have agreed with American humorist Frank McKinney Hubbard who observed: “Next to a circus there ain't nothing that packs up and tears out faster than the Christmas spirit.”

We hope you enjoy our show.

Billy Dragoo

AUDIENCE INFORMATION

Photography -- with or without flash -- is not permitted during the performance. We also respectfully remind you that excessive noise is distracting to the performers and to other patrons.

Please turn off all cellular phones and silence all digital watches and pagers. Crying babies and uncooperative children should be escorted outside.

There will be one fifteen-minute intermission.

Food, drinks of any kind, and candy are not allowed inside the auditorium.

Restrooms are located in the lobby of the main building.

Thank you for your cooperation in making this an enjoyable environment.

SPECIAL THANKS

Red Dragon parents

Ann Dragoo

Sadie Dragoo (for her tea set)

Richard and Wendy Primeaux

Robert Romero

Tommy Grubbs

WHO'S WHO in the COMPANY

CORBIN CHASE (Eddie) is a junior who has been in eleven previous Red Dragon Players shows. Some of his favorite shows include *Radio Eyes*, *Sensical*, and *Holiday Hoopla*. He is thrilled to be in *Season's Greetings* and would like to thank his parents and Mr. Drago for the opportunity.

DEREK DORMAN (Neville) is a senior at Austin High who formerly attended Crockett High School. He was Augustus Gloop in *Willy Wonka*, the 2007 joint production between the Red Dragon Players and the Golden Mask Players. Earlier this year, he was in *Six Degrees of Separation*. He is proud to be a full-time member of such an esteemed group.

AUBREY ELENZ (Belinda) is a sophomore and has been a part of four previous Red Dragon shows. This is her second appearance on stage, and she has loved working with the cast of *Season's Greetings*.

HALEIGH HOLT (Phyllis) is a junior who has worked with the Red Dragon Players for three years. This is her 12th production and she is honored to work with such an amazing and hysterical group of kids. Her favorite show at Austin High -- so far -- has been last year's State Champion UIL show, *Over the River and Through the Woods*. In addition to being in the theatre, she also works on the newspaper and yearbook staffs.

MEREDITH KING (Stage Manager) is a senior and has been involved in eleven previous productions. *Season's Greetings* is the first show she has worked on this year. This has been one of her favorite Red Dragon experiences, and she can't wait to work with the cast members again in the future.

ANDREW MURRAY (Bernard) is a senior who has been involved with the Red Dragon Players for four years. He has been featured in *Into the Woods*, *Radio Eyes*, and *The Diary of Anne Frank*, and served as Stage Manager for last year's State Champion UIL show.

BRIAN SCHWARTZ (Harvey) is a senior who has been in *The Diary of Anne Frank*, *Over the River and Through the Woods* (Best Actor in District), *Into the Woods*, *Radio Eyes*, *Major Barbara*, and *Someone Who'll Watch Over Me*, to name just a few. He plans to attend the University of Southern California.

continued on page 6

COMPANY

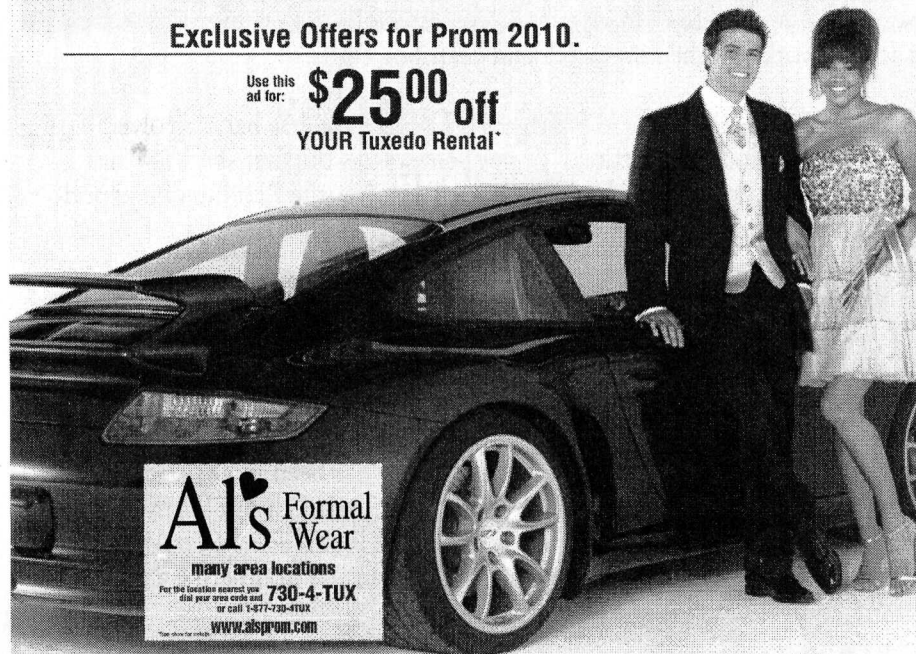
Bernard.....	Andrew Murray
Harvey.....	Brian Schwartz
Belinda.....	Aubrey Elenz
Pattie.....	Mariah Stewart
Eddie.....	Corbin Chase
Neville.....	Derek Dorman
Rachel.....	Catherine Schwartz
Phyllis.....	Haleigh Holt
Clive.....	Mitchell Stephens

PRODUCTION STAFF

Stage Manager	Meredith King
Sound Board Operator	Eden Gallagher, Mazen Khawaja
Light Board Operator.....	Prentice Harvey, Taylor Hodge
Props Mistresses.....	Kelsy Williams, Lily Primeaux
Special Props Master.....	Isaac Buckland
Paint Crew.....	Katherine Schroeder, Sarah Dodson, Shelby Crow
Running Crew.....	Rebecca Halford, Kaylie DeLauri, Connor Moreno, Isaac Buckland, Andrea Arrellaga
Publicity.....	Shelby Crow, Lea Jackson, Kori Mascheck
Ushers.....	Zach Completo, Chuck Rainey, Trinity Stennfeld, Ryan Cooper, Corey Call

Exclusive Offers for Prom 2010.

Use this
ad for: **\$25⁰⁰ off**
YOUR Tuxedo Rental*



AI's Formal
Wear
many area locations
For the location nearest you,
dial your area code and **730-4-TUX**
or call 1-877-730-4TUX
www.aiprom.com

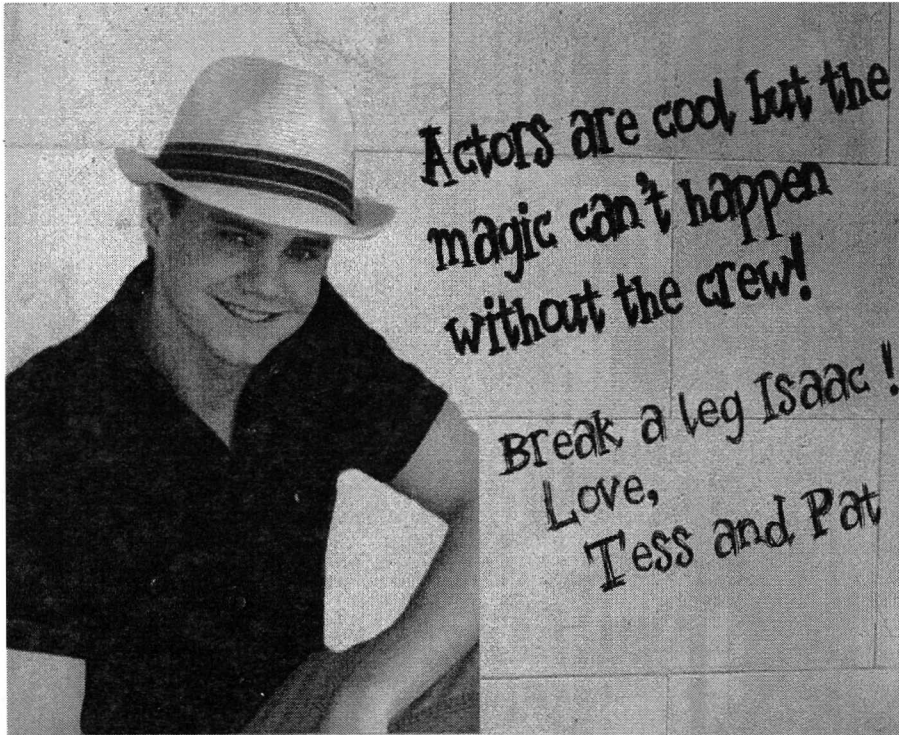
WHO'S WHO in the COMPANY

continued from page 3

CATHERINE SCHWARTZ (Rachel) is a sophomore who has been involved in three previous Red Dragon Productions. She is excited to be part of this wonderful show.

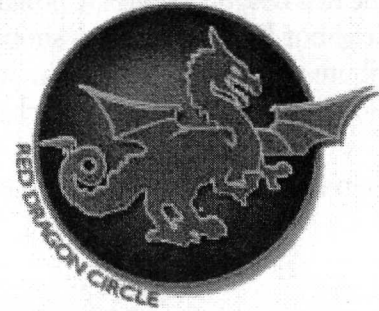
MARIAH STEWART (Pattie) a sophomore, is super excited to be slaving away on her fifth production at Austin High. She has had a blast working on such a well written and clever show with such funny people! So far, *Season's Greetings* has proven to be her favorite show and she loves being apart of it.

MITCHELL STEPHENS (Clive) is a senior at Austin High. He has been in numerous plays. Two of his favorites are *Someone Who'll Watch Over Me* and *Into the Woods*. He plans to attend a college to study theatre and pursue the life of an actor

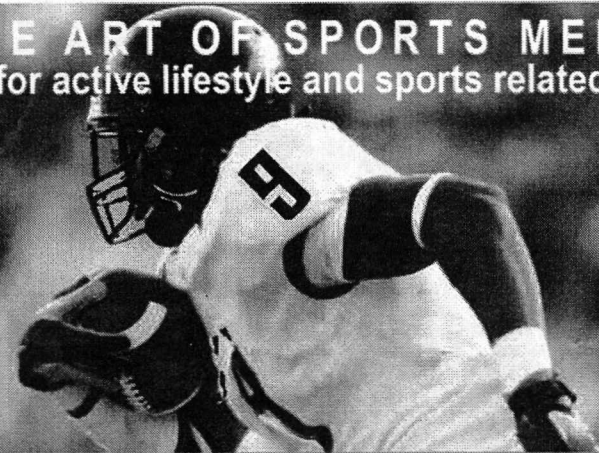


RED DRAGON CIRCLE

This is the support organization for Red Dragon Players. It is made up of parents and community members who support the Austin High Theatre Arts Department. Our goal is to support and promote the theatre program at Stephen F. Austin High School, to perform fund raising activities, and to support and assist the Faculty Director(s) with various duties required in order to produce quality theatrical performances. There are all levels of membership. Be part of the history of theatre excellence at Austin High! For more information, contact 2009-2010 Red Dragon Circle President Wendy Primeaux at wprimeaux@austin.rr.com.



THE ART OF SPORTS MEDICINE
for active lifestyle and sports related injury



AUSTIN
SPORTS
MEDICINE

Doctors Windler Cunningham Elenz Breazeale Fernandez

900 West 38th Street • Suite 300 • 512.450.1300
www.austinsportsmed.com

COMMUNITY SUPPORT

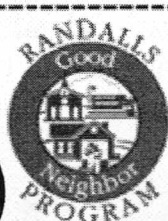
The Red Dragon Players are proud to be a part of the Randall's Good Neighbor Program. If you shop at Randall's and would like to contribute to our theatre department, please notify the checker. By doing so, 1% of your purchase will be sent back to us!

Help us continue to provide the community with quality shows.

Our account
number 477.



477



Organization Number

Don't forget to link our Good Neighbor
Number to your Remarkable Card and
help us raise funds the easy way!

Thank you for your continued support.

Randalls

Ingredients for life..

Bravo!

We applaud all of tonight's talented performers.



MARIPOSA[™]
APARTMENT HOMES

Active Adult 55+ Lifestyle

MariposaApartmentHomes.com

CypressCreek[™]

APARTMENT HOMES

Family Community Living

CypressCreekApartmentHomes.com



BONNER CARRINGTON

We Build Community

