

# ZACH THEATRE

Dave Steakley, Producing Artistic Director | Elisabeth Challener, Managing Director

## ROALD DAHL'S MATILDA THE MUSICAL

BOOK BY DENNIS KELLY MUSIC AND LYRICS BY TIM MINCHIN  
ORCHESTRATIONS AND ADDITIONAL MUSIC BY CHRIS NIGHTINGALE

DIRECTED BY ABE REYBOLD<sup>†</sup> AND NAT MILLER  
MUSICAL STAGING BY ABE REYBOLD<sup>†</sup>  
MUSICAL DIRECTION BY ALLEN ROBERTSON  
CHOREOGRAPHED BY JEN YOUNG MAHLSTEDT

Scenic Designer .....	MICHELLE NEY
Costume Designer .....	SUSAN BRANCH TOWNE**
Hair and Makeup Designer .....	SERRET JENSEN
Lighting Designer .....	MATT WEBB
Sound Designer .....	CRAIG BROCK
Properties Designer .....	SCOTT GROH
Projection Designer .....	STEPHANIE BUSING
Dialect Coach .....	AMANDA COOLEY DAVIS
Stage Manager .....	CATHERINE ANNE TUCKER*
Takeover Stage Manager .....	RUSTY CLOYES
Assistant Stage Manager .....	MEGAN KATHLEEN SMITH*
Assistant Stage Manager .....	KAITLYN "KAT" KENNEDY
Associate Scenic Designer .....	CHERI PROUGH DEVOL
Assistant to Scene Designer .....	GARY A. THORNSBERRY
Stage Management Intern .....	MEREDITH ATKINSON
Student Actor Supervisor .....	MIA DEDEAR
Student Actor Supervisor .....	ANNE-MARIE KOLB

\*Member of Actors' Equity Association, the Union of Professional Actors and Stage Managers in the United States.

\*\* Member of IATSE 829.    † Stage Directors and Choreographers Society

APRIL 3–MAY 12, 2019  
THE TOPFER AT ZACH THEATRE  
There will be one twenty-minute intermission.

Leading Sponsor



Executive Producers Plus

Carl and Claire Stuart

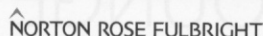
Executive Producers

Michelle and Eric Natinsky

The Honorable Harriet O'Neill and Kerry Cammack

Jan and Gary Pickle

Supporting Sponsors



*Matilda The Musical* was first commissioned and produced by the Royal Shakespeare Company and premiered at the Courtyard Theatre, Stratford-upon-Avon, England on 9 November 2010. It transferred to Cambridge Theatre in the West End of London 25 October 2011 and received its US premiere at the Shubert Theatre, Broadway, USA on March 4, 2013.

ROALD DAHL'S MATILDA THE MUSICAL

Is presented through special arrangement with Musical Theatre International (MTI).

All authorized performance materials are also supplied by MTI.

[www.MTIShows.com](http://www.MTIShows.com)

## Roald Dahl's *Matilda* The Musical Numbers

### Act I

"Overture" .....	Orchestra
"Miracle" .....	Children, Camp Counselor, Doctor, Mrs. Wormwood, Mr. Wormwood, Matilda, Company
"Naughty" .....	Matilda
"Story 1: Once Upon A Time" .....	Matilda, Mrs. Phelps, Acrobat, Escapologist
"School Song" .....	Ensemble
"Pathetic" .....	Miss Honey
"The Hammer" .....	Miss Trunchbull, Miss Honey, Children
"The Chokey Chant" .....	Ensemble
"Loud" .....	Mrs. Wormwood, Rudolpho, Ensemble
"This Little Girl" .....	Miss Honey
"Story 2: The Great Day Arrived..." .....	Matilda, Mrs. Phelps, Escapologist, Acrobat
"Bruce" .....	Company

### Act II

"When I Grow Up" .....	Children, Miss Honey, Matilda, Company
"Story 3: The Trick Started Well..." .....	Matilda, Mrs. Phelps, Acrobat, Escapologist
"Story 4: I'm Here" .....	Matilda, Escapologist
"The Smell of Rebellion" .....	Miss Trunchbull, Children
"Quiet" .....	Matilda
"My House" .....	Miss Honey, Escapologist
"Revoltin' Children" .....	Children, Ensemble
"This Little Girl" (reprise) .....	Sergei
"When I Grow Up" (reprise) .....	Company



## Z-LOUNGE

Live, pre-show entertainment | Drink specials | Snacks

The Topfer lobby bar offers a range of beverages, sweets, and gourmet hors d'oeuvres. The bar is open 90 minutes before, and one hour after showtime.

## Roald Dahl's *Matilda* The Musical Cast

Miss Trunchbull .....	J. ROBERT "JIMMY" MOORE*
Miss Honey .....	LAURA LYMAN PAYNE*
Mrs. Wormwood .....	SARA BURKE*
Mr. Wormwood .....	ANDRÉ MARTIN*
Mrs. Phelps .....	LARA WRIGHT*
The Escapologist .....	TYLER JONES*
The Acrobat .....	EBONY CRICHLLOW*
Doctor/Sergei .....	PAUL SANCHEZ*
Rudolpho .....	ERNEST SAUCEDA*
Camp Counselor .....	BEN GIBSON*

Other roles played by JAUKEEM BALCOM\*, EBONY CRICHLLOW\*, BEN GIBSON\*, TYLER JONES\*, LAURA LYMAN PAYNE\*, PAUL SANCHEZ\*, ERNEST SAUCEDA\*, LARA WRIGHT\*

### Young Orange Cast

Matilda Wormwood .....	CHLOE VAN DE GRAAF
Bruce .....	WILL MAY
Lavender .....	SLOANE JOHNSON
Nigel .....	LOGAN MARCUM
Amanda .....	PAIGE RILEY
Eric .....	BRUCE BOWEN
Alice .....	ALYSA SPIRO
Hortensia .....	MARIELA DENSON
Tommie .....	BEATRIX MCDANIEL

### Young Blue Cast

Matilda Wormwood .....	ALEXA NELAN
Bruce .....	WILKES JACOB GOODNER
Lavender .....	BLAKENEY MAHLSTEDT
Nigel .....	RYAN GU
Amanda .....	STELLA BLUE FRYE-GINSBERG
Eric .....	CAMERON REDWINE
Alice .....	SAMANTHA BEAM
Hortensia .....	ELLIE GRACE HODGES
Tommie .....	ELLA RUTMAN

### Youth Cast

Michael Wormwood .....	JACK WEAVER, BRECKIN MURPHY
Ensemble roles played by	MERCY BOVIK, AUSTIN DUNN, CAMRYN LAMONTAGNE, ZOË PARKINSON, CARLI VINCIGUERRA, OWEN SCALES, ANDERSON ZOLL

### Swings and Understudies

ARAYA FEENEY (Swing), ALEXA GRACE GODWIN (Swing), JACK WEAVER (Swing), JAUKEEM BALCOM\* (Doctor/Sergei) MERCY BOVIK (Acrobat), AUSTIN DUNN (Rudolpho and Escapologist), BEN GIBSON (Miss Trunchbull and Mr. Wormwood), CAMRYN LAMONTAGNE (Mrs. Wormwood), ZOË PARKINSON (Mrs. Phelps), CLAIRE SARMAN (Miss Honey and Camp Counselor)



\*Actors' Equity Association, founded in 1913, represents more than 49,000 Actors and Stage Managers in the Understudy Equity negotiates wages and working conditions, providing a wide range of benefits, including health and pension plans. Equity seeks to foster the art of live theatre as an essential component of our society. [actorsequity.org](http://actorsequity.org)

## Roald Dahl's *Matilda* The Musical Cast



J. Robert "Jimmy" Moore\*



Chloe Van De Graaf



Alexa Nelan



Laura Lyman Payne\*



Sara Burke\*



André Martin\*



Lara Wright\*



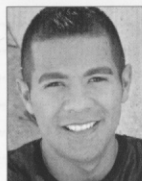
Tyler Jones\*



Ebony Crichlow\*



Paul Sanchez\*



Ernest Saucedo\*



Ben Gibson\*



Jaukeem Balcom\*



Will May



Wilkes Jacob Goodner



Sloane Johnson



Blakeney Mahlsiedt



Logan Marcum



Ryan Gu



Paige Riley



Stella Blue Frye-Ginsberg



Bruce Bowen



Cameron Redwine



Alysa Spiro



Samantha Beam



Mariela Denson



Ellie Grace Hodges



Beatrix McDaniel



Ella Rutman



Jack Weaver



Breckin Murphy



Mercy Bovik



Austin Dunn



Camryn Lamontagne



Zoë Parkinson



Carli Vinciguerra



Owen Scales



Anderson Zoll



Araya Feeney



Alexa Grace Godwin



Claire Sarman

### Photos and videos



The videotaping or other video or audio recording of this production and the taking of photographs, with or without flash, or by camera phone, is strictly prohibited. Please turn off all electronic devices — such as cell phones, pagers, etc. — and refrain from texting and/or tweeting during the performance.

### Taking photos in the theatre

Audience members may take photos in the theatre before and after the show and during intermission. If you post photos on social media or elsewhere please credit the production's designers.



\*Actors' Equity Association, founded in 1913, represents more than 49,000 Actors and Stage Managers in the Understudy Equity negotiates wages and working conditions, providing a wide range of benefits, including health and pension plans. Equity seeks to foster the art of live theatre as an essential component of our society. [actorsequity.org](http://actorsequity.org)

## Roald Dahl's *Matilda* The Musical Cast



## Roald Dahl's *Matilda* The Musical Cast

**J. ROBERT "JIMMY" MOORE** (Ms. Trunchbull) – ZACH: *Peter and the Starcatcher*, *Buyer and Cellar*, *The Santaland Diaries*. REGIONAL: *The Rocky Horror Show*, *Big Fish*, *Billy Elliot* at Lyric Theatre of Oklahoma; *Twelfth Night*, *Waiting for Godot*, *She Stoops to Conquer* at Classic Theatre of San Antonio; *You Never Can Tell*, *The Count of Monte Cristo*, *Sweeney Todd* at the Virginia City Opera House. ADDITIONAL CREDITS: Phish's 2011 New Year's Eve Spectacular at Madison Square Garden; *Almost Adults* at Manhattan Repertory; OFF BROADWAY: *O Night Divine* at York Theatre. TOURS: *Ellis Island Stories*, *American Family Theatre*. Jimmy has an M.F.A. in Directing from Texas State University, and has studied with The Royal Shakespeare Company, The Royal Academy of Dramatic Arts, and Shakespeare's Globe Theatre in England. Many thanks to ZACH. Love to Levi, and amazing family and friends. More info at JRobertMooreOnline.com.

**CHLOE VAN DE GRAAF** (Matilda Wormwood) – ZACH: Debut. Chloe is a third year member of ZACH's Pre-Professional Company. She enjoys playing the piano and practicing Tae Kwon Do where she has earned a second degree black belt. She is currently a seventh grade student at Kealing Magnet Middle School.

**ALEXA NELAN** (Matilda Wormwood) – ZACH: Debut. REGIONAL: *Disney's Beauty and the Beast* (Chip Potts) at Berkeley Playhouse.

**LAURA LYMAN PAYNE** (Miss Honey / Mum) – ZACH: Debut. REGIONAL: *Twas the Night before Christmas* (Mary Midkiff) at Casa Mañana Theatre; *Dark Room* at Bridge Repertory Theatre; *My Fair Lady* at Garland Summer Musicals; and *Beowulf: A Thousand Years of Baggage* (Warrior) at Trinity Repertory Company. ADDITIONAL CREDITS: *Anna Karenina* (Anna) at Notch Theater (workshop); *Side Show* (Daisy Hilton) and *Our Country's Good* at Brown/Trinity Rep M.F.A. Up next Laura will be playing Jo in *The Ballad of Little Jo* at WaterTower Theatre. M.F.A. in Acting from Brown University/Trinity Rep. Much love to her friends and family! [www.lauralymanpayne.com](http://www.lauralymanpayne.com)

**SARA BURKE** (Mrs. Wormwood) – ZACH: *Singin' in the Rain*; *Priscilla, Queen of the Desert*; *Peter and the Starcatcher* (Molly), *A Christmas Carol* (Belle), *Les Misérables*, *White Christmas*, *Xanadu*, *Spring Awakening* (Wendla) and *Hairspray* (Amber von Tussle). NORWEGIAN CRUISE LINE: *Legally Blonde*

*The Musical* (Brooke / Vivienne Understudy / P). OTHER: *Shrek The Musical* (Fiona) with Zilker Theatre Productions, *Chicago* (Roxie Hart) with Austin Playhouse, *Legally Blonde The Musical* (Serena) with Red Mountain Theatre Co.; *The Last Five Years* (Cathy) with Penfold Theatre Company; *Sweet Charity* (Charity) with Summer Stock Austin. VOICEOVER: *Where'd you go Bernadette?*, directed by Richard Linklater.

**ANDRÉ MARTIN** (Mr. Wormwood) – ZACH: *The Curious Incident of the Dog in the Night-Time* (Roger, Ensemble); *One Man, Two Guvnors* (Alan Dangle); Theatre en Bloc: *The Totalitarians* (Jeffrey Jefferson); Austin Shakespeare: *The Invention of Love* (A.E. Housman); REGIONAL: Five seasons with the Independent Shakespeare Co. in Los Angeles: *Romeo & Juliet* (Mercutio), *Pericles* (Pericles), *Much Ado About Nothing* (Dogberry), *Love's Labour's Lost* (Don Armado), *Twelfth Night* (Sir Andrew Aguecheek), *The Taming of the Shrew* (Tranio), *Macbeth* (Macduff), *She Stoops to Conquer* (Tony Lumpkin), *A Midsummer Night's Dream* (Lysander), *Winter's Tale* (the Clown), *Comedy of Errors* (Antipholus), *Hamlet* (Laertes), *The Two Gentlemen of Verona* (Valentine), *Othello* (Cassio) Delaware R.E.P.: *Hamlet* (Rosencrantz), *Death of a Salesman* (Howard) Milwaukee Rep: *Cyrano de Bergerac* (Christian); ADDITIONAL CREDITS: M.F.A. in Acting from the P.T.T.P at the University of Delaware. TV: *Fear the Walking Dead*, *Queen of the South*; *American Crime* (dir. John Ridley); *Day 5*.

**LARA WRIGHT** (Mrs. Phelps / Mum) – ZACH: *Once*; *Sunday in the Park with George*; *The Curious Incident of the Dog in the Night-Time* (Ens.); *Priscilla, Queen of the Desert* (Marion/Ens.); *Evita* (Ens.); *A Christmas Story* (Miss Shields); *White Christmas* (Rita); *Xanadu* (Calliope); *Rent* (Ens.); *The Drowsy Chaperone* (Kitty); *The Rocky Horror Show* (1999, Ens.). REGIONAL: *Shakespeare in Love* (Ens.); *Guys and Dolls* (Ens.); *Sense and Sensibility* (Fanny/Anne/Ens.); *A Little Night Music* (Charlotte); *The Philadelphia Story* (Liz); *Triumph of Love* (Corine) at Austin Playhouse (Company Member); *Bethany* at Theatre en Bloc; *Dead Man's Cell Phone* (Hermia) at En Route Prods.; *The Best Little Whorehouse in Texas* (Ruby Rae/Imogene Charlene) at TexArts; *Heathers* (Ms. Flemming) at Doctuh Mistuh Prods. Graduate of The American Academy of Dramatic Arts, NYC.

## Roald Dahl's *Matilda* The Musical Cast

**TYLER JONES** (Escapologist / Henchman #2 / Dad) – ZACH: *Xanadu*; *Ragtime*; *White Christmas*; *Peter and the Starcatcher*; *A Christmas Carol*; *One Man, Two Guvnors*; *Disney's Mary Poppins* and *Sunday in the Park with George*. He is a native Austinite who has performed in many shows around town. OTHER: *Cabaret*, *Merrily We Roll Along* at Mary Moody Northern Theater. *Silence*, *Nevermore* at Doctuh Mistuh Productions, *Hairspray*, *The Little Shop of Horrors*, *The Music Man* at Zilker Theatre. The Lonesome West at Hyde Park Theatre, *Spirits to Enforce* at Capital T Theatre, *I Love You Because* at Penfold Theatre, *Freud's Last Session* at Jarrott Productions and *Shakespeare in Love* at Austin Playhouse. Thanks to all involved with *Matilda The Musical* for a transcendent experience!

**EBONY CRICHLAW** (Acrobat / Mum / Henchman #4) – ZACH: Debut. A cancer survivor and advocate for the fight against Lupus and Leukemia, Ebony gained the title of Miss Central Texas United States in 2015. Additionally, Ebony dedicates a majority of her time to Philanthropy, Modeling and Dance/Choreography. CREDITS: Lifestyle/Fashion Model (Nylon Magazine), Lifestyle/Fashion Model (Marie Claire Magazine), Commercial/Print Model (Quiznos), Commercial/Print Model (Smoothie King) ADDITIONAL CREDITS: Actress (Hulu Handmaids Tale, Season 1) - Professional Dancer (Facebook, SXSW, Austin City Limits, ESPN). Ebony is already looking forward to preparing for her next musical and can't wait to share her first ever musical debut with her family, friends, and the great city of Austin!

**PAUL SANCHEZ** (Doctor / Sergei / Cook) – ZACH: *Sunday in the Park with George*, *In the Heights*, *Goodnight Moon*, *Evita*, *A Christmas Carol*, *The Who's Tommy*, *Les Misérables*, *Speeding Motorcycle*. OPERA: *Turandot*, *Il Travatore*, Mozart's *Idomeneo*, *Romeo and Juliet*, Verdi's *Falstaff* and 50 Year Celebration with Renee Fleming and Brian Tittle at Houston Grand Opera; *La Traviata*, *Turandot*, *Così fan tutti* and *Dead Man Walking* at Austin Lyric Opera. ADDITIONAL: TexArts: *Guys and Dolls* CREDITS: Soloist and choir member at Riverbend Church and Opera Group Margot. Paul also sings with different R&B and rock bands in the Austin area and sang back ground vocals for Prince, Elton John, Jay-Z and Deltron 3030. Currently touring the Graham Reynolds original opera *Pancho Villa* From A Safe Distance.

**ERNEST SAUCEDA** (Rudolpho / Dance Captain) – ZACH: Debut. REGIONAL: *West Side Story* (Indio) at San Diego Musical Theatre; *Fiddler On The Roof* (Fiddler), *An American Christmas* and *OZ* at Lamb's Player's Theatre; *Evita* at Maine State Music Theatre; *Jonah* at Sight and Sound Theatre. INTERNATIONAL: Universal Studios Japan, Disney Cruise Line. ADDITIONAL CREDITS: Mariachi USA at the Hollywood Bowl; Cinco De Mayo Celebration at the White House; Hispanic Heritage Awards at the Kennedy Center; Busch Gardens Williamsburg; Dollywood; Arwen Daniels Dance Academy; Freeway Dance Studio in Osaka, Japan; Broadway Dance Center in NYC.

**BENGIBSON** (Counselor / Henchmen #1 / Ensemble / u/s Miss Trunchbull u/s Mr. Wormwood u/s) – ZACH: Debut. REGIONAL: *The Mystery of Edwin Drood* (Deputy) at Austin Playhouse, *TRIO* (Tim) and *When We Were Young and Unafraid* (Paul) at Filigree Theatre; *Cowboy in the Kitchen* (Cowboy BIPAC nomination Outstanding Actor in a Production for Youth) at Pollyanna Theatre Company; *All Shook Up* at Zilker Theatre Productions; *Footloose* (Willard) at Okoboji Summer Theatre; *Anything Goes!* (Moonface Martin) at Macklanburg Playhouse; *Chicago* and *Fiddler on the Roof* at Priscilla Beach Theatre; *Spamalot*, *Les Misérables*, *Titanic*, *Grease*, *Anything Goes*, and *George M!* at Toby's Dinner Theatre; *Jerry Springer: The Opera* at Studio Theater 2nd Stage; *The 25th Annual Putnam County Spelling Bee* (Barfee) at Workhouse Theatre; *The Producers* (Leo Bloom) at Drama Learning Center; *Dr. DoLittle*, *Peter and the Wolf*, *Busytown*, and *Heidi: The Musical Adventure* at Imagination Stage; *The Hobbit*; *Alexander and the Horrible, Terrible, No Good, Very Bad Day*; *Five Little Monkeys* at Adventure Theatre. INTERNATIONAL: *Signs of Life* (Heindel) in Prague, Czech Republic; *Alice and Liang and the Magic Paint Brush* in Hong Kong. ADDITIONAL CREDITS: B.A. in Music Theatre and M.A.T. in Theatre and Drama from American University.

**JAUKEEM BALCOM** (Ensemble) – ZACH: Debut. REGIONAL: *Shakespeare in Love* (Ensemble) and *Sister Act the Musical* (Pablo) at Playhouse on the Square; *Om Shanti* (Ensemble) at Miller Outdoor Theatre; *COMMUNITY: Big Gay Musical* (Improviser) and *Grand Misery* (Improviser) at The Hideout Theatre. ADDITIONAL CREDITS: B.P.S with a concentration in Dance from the University of Memphis; Destined to Dance Award Recipient for Best Male Hip Hop Choreographer 2016 and 2017.



## Roald Dahl's *Matilda* The Musical Cast

**WILL MAY** (Bruce) – ZACH: *A Christmas Carol* (2014 and 2017, Tiny Tim and Ensemble); *Mothers and Sons* (Bud Ogden Porter); *A Christmas Story* (Randy Parker.) REGIONAL: *Aladdin, Jr.* (Aladdin) at Lamar Fine Arts Academy; *The Wizard of Oz* (Coroner) at Zilker Theatre Productions. FILM: *A Country Called Home* (Billy); *Fear the Walking Dead* (Extra.) Will trains with ZACH's PPC Apprenticeship, is a student of voice with Paul Sanchez, and is sixth grade theatre major at Lamar Fine Arts Academy.

**SLOANE JOHNSON** (Lavender) – ZACH: *A Christmas Carol* (Fan, 2018; Belinda Cratchit, 2017). ZACH Pre Professional Show – *Find Your Light*. Additional Credits: ZACH Pre Professional Company 2017 to Present. Education: ZACH Academic Performing Arts Academy. Sloane is 12 years old and in the sixth grade. She is thrilled to return to the ZACH in the cast of *Matilda The Musical*! Sloane would like to thank her PPC Directors, Jen Young and Josh Wechsler for their guidance and support. She would also like to thank her vocal coach Paul Sanchez, her instructors at the ZACH Academic Performing Arts Academy and Body Lab ATX Dance for their mentorship. Sloane thanks her family and friends for their love and support as she follows her dream!

**LOGAN MARCUM** (Nigel) – ZACH: *Sunday in the Park with George* (Bather Boy), *A Christmas Carol* (Young Scrooge/Turkey Boy/ Ignorance/ Ensemble), 2017, 2018. Logan is a member of ZACH's Pre-Professional Company and Murchison Middle School's Advanced Theatre Program.

**PAIGE RILEY** (Amanda) – ZACH: *A Christmas Carol* (2018, 2017) REGIONAL: *The Wizard of Oz* (Youth Ensemble) and *Shrek The Musical* (Little Fiona and Baby Bear) at Zilker Theatre Productions, *The Wizard of Oz* (Dorothy), *The Pirates of Penzance* (Ensemble), *Annie Get Your Gun* (Nellie and Chief Sitting Bull) at AJRT, and *Willy Wonka* (Veruca Salt) at KidsAct OTHER: Freshman at ZAPAA and Pre-Professional Company with ZACH.

**BRUCE BOWEN** (Eric) – ZACH: *Sunday in the Park with George* (Bather Boy), *Singin' in the Rain* (Young Don Lockwood). BROADWAY: *Rocktopia* (Camp Broadway Choir) The Broadway Theatre. ZILKER THEATRE: *The Wizard of Oz* (Lollipop Guild/Flying Monkey). Bruce is a proud participant at ZACH's Pre Professional Company A, as well as a ZACH Academy student. He is so grateful to be a part of the ZACH family and is looking forward to a long career in theater and performing arts. -James 1:17

**ALYSA SPIRO** (Alice) – ZACH: *A Christmas Carol* 2018 (Fezziwig Daughter, Ensemble); *A Christmas Carol* 2017 (Cratchit Family, Ensemble); *Find Your Light*; *The Best of Broadway*. Alysa is a third-year member of ZACH's Pre-Professional Company. She is a freshman vocal major at McCallum High School and Fine Arts Academy. Sending love to her ZACH family, real family, teachers and friends for all support. Enjoy the show y'all!

**MARIELA DENSON** (Hortensia) – ZACH: *Tortoise and Hare* (Haro), *Sunday in the Park with George* (Louise), *Holiday Heroes* (Purple), *Charlotte's Web* (Fern), and *A Christmas Carol* (Ensemble). ZACH Pre-Professional Company Member. REGIONAL: *Fun Home* (Small Alison) at Ground Floor Theatre; *Robt'n* (Midge), *The Music Man* (Amaryllis), *A Shoe Story* (Mel), *Annie Get Your Gun* (Jessie), and *Carnival* (Great Schlegel) at Summer Stock Austin. FILM: *Hurricane Bianca*.

**BEATRIX CONN MCDANIEL** (Tommie) – ZACH: 2018, *A Christmas Carol*. Additional credits: Lamar production of *Willy Wonka*, *Peter Pan*, Scottish Rite Theater. Bea is currently a seventh grader at ZACH Academy. Pre-Professional Company Member.

**WILKES JACOB GOODNER** (Bruce) – Wilkes is thrilled to be returning to ZACH in *Matilda*. ZACH: *Disney's Beauty and the Beast* (Chip); *Priscilla, Queen of the Desert* (Benji). Wilkes has also performed in community productions of Disney's *Mary Poppins*, *Anything Goes*, *Cinderella*, *Shrek the Musical*, and *The Music Man*. In addition to acting and singing, Wilkes enjoys playing basketball, learning piano, taking family road trips, and spending time with his friends. Wilkes currently is a sixth grader at Hill Country Middle School and would like to thank his family for their love and support. Pre-Professional Company Member.

**BLAKENEY MAHLSTEDT** (Lavender) – ZACH: *Tortoise and Hare* (Haro) *Sunday in the Park with George* (Louise); *A Christmas Carol* (Fan), *Disney's Mary Poppins* (Jane/ US); *A Christmas Carol* (Youth Ensemble). Other Credits include: West Lake High School's *Disney's Mary Poppins* (Jane); *Shrek The Musical*; *Cinderella*; and *The Music Man*. Blakeney trains with Ballet Austin Academy and she is a proud member of ZACH's Pre-Professional Company and ZACH Academy. Blakeney would like to thank her amazing friends and family, for always supporting her journey in the Arts!

## Roald Dahl's *Matilda* The Musical Cast

**RYANGU** (Nigel) – ZACH: *Singin' in the Rain* (Young Cosmo) in 2017, *A Christmas Carol* (Tiny Tim) in 2015 and 2016. OTHER THEATRE: *Zombies* and *Lion King* with KidsActing Studio. ADDITIONAL: singing, dancing, ice skating, basketball. Pre-Professional Company Member.

**STELLA BLUE FRYE-GINSBERG** (Amanda) – ZACH: *A Christmas Carol*; ZACH Pre-Professional Shows: *Find Your Light*, *The Best of Broadway*. ADDITIONAL CREDITS: ZACH's PERFORMING ARTS ACADEMY, Member of ZACH's Pre-Professional Company since 2016, training with Ballet Austin since 2017. Stella Blue is excited to be back on ZACH's mainstage for *Matilda The Musical*. She would like to express gratitude to God, family, friends, Jen Young and Josh Wechsler and all of the mentors who continue to guide and support her each day.

**CAMERON REDWINE** (Eric) – ZACH: *Singin' in the Rain* (Young Cosmo); ZILKER THEATRE: *The Wizard of Oz* (Munchkin); GLORIA DELGADO THEATRE: *A Funny Thing Happened on the Way to the Forum* (Pseudolous); KIDS ACTING: *Alice in Wonderland* (King of Hearts); TEXARTS: *Legally Blonde The Musical* (Emmett), *Disney's Beauty and the Beast* (Lefou), *Annie* (Miss Hannigan). Cameron is currently a student in the ZACH Pre-Professional Company and in the sixth grade.

**SAMANTHA PAULINE BEAM** (Alice) – ZACH: *A Christmas Carol* (Meg Cratchit/Student Ensemble). REGIONAL: *The Music Man* (childrens ensemble) Rollins Theater at The Long Center; *Disney's Beauty and the Beast* (featured ensemble) at Center Stage Theater. ADDITIONAL CREDITS: ZACH's Performing Arts School; ZACH Pre-Professional Company (PPC); Summer Stock Austin. Samantha is thrilled to be involved in her second mainstage show here at ZACH. She would like to thank her parents, brother, and directors for their support.

**ELLI GRACE HODGES** (Hortensia) – ZACH: *A Christmas Carol* (2016, 2017, Cratchit kid). REGIONAL: *The Wizard of Oz* at Zilker Summer Theatre (Mayor of Munchkin City); *The Nutcracker* at Ballet Austin (Mouse). She is a proud student in ZACH's Pre-Professional Company and Ballet Austin. She would like to thank her voice coach, Michelle Hache, dance coach Jaclyn LeFebre, acting coach Scott Shipman, Talia Speradino at MMG and the entire ZACH team - especially Jen Young and Josh Weschler! Love to my family and friends! ADDITIONAL CREDITS:

Broadway World winner and Zilker (ZTP) 2017 Outstanding Ensemble Cast Member. Philippians 4:13. Insta: elligracehodes

**ELLA RUTMAN** (Tommie) – ZACH: *A Christmas Carol*; *Ragtime*. REGIONAL: *As Butterflies* (Mif) Austin Jewish Repertory Theatre; *Sunday in the Park with George* (Louise) Austin Shakespeare; *The Laramie Project* (Kelli Simpkins) French Woods Festival of the Arts; *Catch Me If You Can* (Brenda) French Woods Festival of the Arts; *Peter Pan* (Michael) Georgetown Palace; *The Sound of Music* (Gretl) Zilker Hillside Theatre; *Brave Irene* (Irene) Interlochen Center for the Arts. ADDITIONAL CREDITS: 2016 B. Iden Payne Nomination for Best Young Actress in *As Butterflies*. Pre-Professional Company Member.

**JACK WEAVER** (Michael Wormwood / Swing) – ZACH debut. Disney's *Mary Poppins* (George Banks), *Half a Sixpence* (Buggins) at Stagedoor Manor. *The Diviners* (Melvin), *The Prime of Miss Jean Brodie* (Mr. Perry) at the Austin Actor's Studio. Jack is a member of PPC and would love it if you followed him on Instagram @jackweavermagic.

**BRECKIN MURPHY** (Michael Wormwood) – North East School of the Arts: *Forbidden Broadway* (Jean Valjean), *Newsies* (Brooklyn Newsie/dance ensemble), *Chicago* (Reporter), *The Phantom of the Opera* (Phantom double/ Policeman), *Evita* (suitor, thug) Christian Youth Theater San Antonio: *Tarzan* (Tarzan), *Shrek The Musical* (Lord Farquaad), *Willy Wonka Jr.* (Grandpa Joe), *Bye Bye Birdie* (Conrad Birdie) Circle Arts Theatre: *Footloose* (Chuck Cranston). ADDITIONAL CREDITS: A member of ZACH's PPC Elite Company.

**MERCY DAHN BOVIK** (Ensemble / Acrobat u/s) – ZACH: *Les Miserables* (Young Eponine); *Charlotte's Web* (Fern); *A Christmas Carol* 2014-2018 (Martha Cratchit, Gilchrist Child, Dilbert Child, and Ensemble); *Annie* (Duffy); *Tortoise and Hare* (Britney and Kabri). REGIONAL: *The Wizard of Oz*, Zilker Hillside Theatre (Featured Dancer and Adult Ensemble). ZACH Pre-professional shows: *Find Your Light*; *That's Entertainment*; *Steppin' Out*; *Broadway Rocks*; *Fifty Years of Broadway*. ADDITIONAL CREDITS: Ninth grader at ZACH Academy; studies voice with Josh Weschler. Pre-Professional Company Member.

**AUSTIN DUNN** (Ensemble / Rudolpho u/s and Escapologist u/s) – ZACH: Debut. REGIONAL: *The Music Man* (Tommy Djilas) and *Dirty Rotten Scoundrels* (Ensemble) at Summer Stock Austin.

## Roald Dahl's *Matilda The Musical* Cast

Austin is a member of Josh Wechsler's vocal studio. ADDITIONAL CREDITS: ZACH Theatre's Pre-Professional Company.

**CAMRYN LAMONTAGNE** (Ensemble, Mrs. Wormwood u/s) – ZACH: *A Christmas Carol* (Ensemble, Fred's Partygoer); Disney's *Beauty and the Beast* (Ensemble, Silly Girl u/s); *Find Your Light* (PPC 2018); *The Best of Broadway* (PPC 2017). Camryn is a three year member of ZACH's Pre-Professional Company and Josh Wechsler's vocal studio. She also attends ZACH's Academic Performing Arts Academy. She would like to thank her family for their constant support as well as Josh Wechsler, Jen Young and Marianne Hakanson for their instruction and direction.

**ZOE PARKINSON** (Ensemble, Mrs. Phelps u/s) – ZACH: Terrence McNally 80th Birthday Celebration (PPC). OTHER: *The Fantasticks* (Luisa) at Bastrop Opera House. Zoë is so thankful to be a part of *Matilda The Musical*! She would like to thank her parents for their limitless support, and Josh Wechsler and Jen Young for inspiring her to be a better artist and person. Pre-Professional Company Member.

**CARLI VINCIGUERRA** (Ensemble) – ZACH: *A Christmas Carol* (Student/Women's Ensemble) and *Tortoise and Hare* (Kabri/Presley). She is a sophomore at ZACH's Performing Arts Academy. ZACH Pre-Professional Shows: *A Midsummer's Night Dream* (Puck), *Suessical Jr.* (Dance Captain), and *Find Your Light* (B Company Member). REGIONAL: *Gypsy* (Baby June) at Southwestern University, *High School Musical Jr.* (Sharpay), *The Little Mermaid Jr.* (Sebastian), and *Suessical Jr.* (The Cat in The Hat) at Gorzycki Middle School. ADDITIONAL CREDITS: ZACH's Pre-Professional Elite Company and GAHSMTA Ensemble (2018).

**OWEN G. SCALES** (Ensemble) – ZACH: Disney's *Beauty and the Beast* (OnStage Swing); *A Christmas Carol* (Peter Cratchit/Ensemble). REGIONAL: *Annie Get Your Gun*, *Carnival*, *Spamalot*, and *The Steadfast Tin Soldier* at Summer Stock Austin. Owen is a Junior Performance Theatre Major at McCallum Fine Arts Academy and a proud of the ZACH PPC Elite Company. Special thanks to God and his family, and Michelle Hache, Jen Young Mahlstedt, Josh Wechsler.

**ANDERSON ZOLL** (Ensemble) – ZACH: Disney's *Mary Poppins* (Michael Banks); *A Christmas Carol* (Cratchit Family, Will, Turkey Boy, Ignorance, 2014, 2015, and 2016); ZACH PPC Showcase: *That's Entertainment* (2016), *The Best of Broadway* (2017), *Find Your Light* (2018)) REGIONAL: *Cabaret* (Young Tenor) Mary Moody Northern Theatre; TRAINING: ZACH Pre-Professional Company; Josh Wechsler vocal studio; ZACH Acting Company; ZACH Dance Intensive; Voice with Michelle Haché. Anderson is in an eighth grader at Canyon Vista Middle School. He would like to thank the village of people who teach him and his friends and family for their support.

**ARAYA FEENEY** (Swing) – ZACH: Mainstage debut. *Find Your Light* (PPC 2018). REGIONAL: *The Addams Family* (Wednesday) at Christian Youth Theatre New Braunfels. ADDITIONAL: *Stage V* (Featured Extra), *Into the Who Knows* (Extra). Araya is a member of ZACH's Pre-Professional Company, and is ecstatic to be in her first mainstage show. She would like to thank her family for their love and support, and Jen Young and Josh Wechsler for their direction. Phil. 3:13-14

**ALEXA GRACE GODWIN** (Swing) — ZACH: *A Christmas Carol* (2017 and 2018); ZACH Pre-Professional Shows: *Find Your Light*, *The Best of Broadway*. REGIONAL: Disney's *The Little Mermaid* (Winward) at The Georgetown Palace Theatre. ADDITIONAL CREDITS: ZACH's Performing Arts Academy, ZACH Theatre Pre-Professional Company (PPC) 2016–19, and Summer Alumni of Joffrey and Broadway Artist Alliance in NYC. Alexa would like to thank her family, friends, and teachers for their continued love and support as well as Jen Young, Josh Wechsler and Paul Sanchez for their endless encouragement and direction.

**CLAIRE SARMAN** (Miss Honey u/s / Camp Counselor u/s) – ZACH: Debut. ZACH Pre-Professional Company shows: *Find Your Light*; *The Best of Broadway*. ADDITIONAL CREDITS: *The Sound of Music* (Maria Rainer); *Into the Woods* (Rapunzel); *Shrek The Musical* (Pinocchio). OTHER: Claire is a proud member of ZACH's Pre-Professional Elite Company and a Junior at Vandegrift High School. She would like to thank the entire ZACH creative team for this incredible opportunity. Additional thanks to Jen Young, Josh Wechsler, and her friends and family for their constant support!

## Roald Dahl's *Matilda The Musical* Production Crew

### COSTUMES

Stitcher ..... Emily Eoff, Jennifer Ball, Cristal Martinez, Jordan Visage, Jessica Boettger, Elizabeth Enslinger, Alana Anthony  
 Draper..... Wayne Fowks, Virginia McGeever, Joan Mather  
 Assistant Costume Manager ..... Elizabeth Enslinger  
 Lead Dresser..... Sally Hall  
 Wig and Makeup Crew..... Kat Carson  
 Wardrobe Crew ..... Jordan Visage, Sabrina Loyless

### SCENIC

Carpenters ..... Christy Howell, Mike Hennessy, Chris Dominguez  
 Overhire Carpenters..... Jen Jenkins, Reymundo Montoya, Drew Bologna  
 Scenic Artist ..... Jamaica Gilmore, Roger Mason

### PROPERTIES

Properties Carpenter ..... Marshall Tosko  
 Properties Artisan ..... Darby Powers

### AUDIO

Lead Audio Engineer ..... Pete Martinez  
 Assistant Audio Engineer..... Alex Cottam

### LIGHTING AND VIDEO

Master Electrician ..... Austin Brown  
 Light Board and Projections Operator ..... Connor Meers  
 Spots Operators..... Michael Davis, Joel Mercado-See  
 Electrician Overhires ..... Jacob Singleton, Jesse Walser Castro, Emily Holmead, Michael Davis, Jacqueline Sindelar, Tim Stone, Matt Zapata, Samantha Smith, Evan Boswood, Jesse Castro, Jonathan Sikora

### STAGE OPERATIONS

Stage Crew Chief ..... Richard Powers  
 Properties Stagehand..... Woody Hutzel  
 Show Crew..... Cameron Pollard, Caitlin Conneely  
 Show Crew Sub..... Kyle Kirchhoff  
 Stage Operations Overhire..... Cameron Pollard, Caitlin Conneely, Basil Brown, Kyle Henderson, Cara Juan, Adam Olds, Reymundo Montoya, Alison Lewis, Kyle Kirchhoff, Leslie McDonel



## Roald Dahl's *Matilda* The Musical Director's Notes

Welcome to *Matilda The Musical*. This brilliant adaptation by Tim Minchin, Dennis Kelly, and artists at the Royal Shakespeare Company, originally comes from the dark, weird and outrageous imagination of master storyteller Roald Dahl. First published in 1988, this children's literature staple came late in Dahl's writing career. While researching his life to find inspiration for this production, I discovered that during his twilight years he developed a genuine fear that books were going to disappear. In hopes of proving their need for existence, Dahl, therefore, created a heroine who finds sanctuary in them. In both the original story and the musical, books ignite Matilda's journey of self-knowledge and give her the strength to tackle immense obstacles.

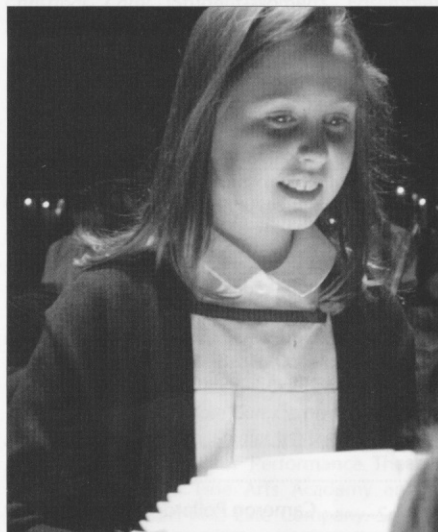


Photo: Alexa Nelan. Statesman Media Studio

Digging deeper into Dahl's life, I disappointingly found more heartbreak than inspiration. Yet, it was fascinating to see how throughout his life the author overcame many challenges, much like the young heroes and heroines of his stories who turn their bleak circumstances from tragedies into triumphs.

In the end, it was his personal philosophy on writing for young people that gave our team a way into this fantastical world and guided us to, hopefully, be "unconventional, funny, inventive, magical, eccentric" and above all "quick paced".

Though I've finished my research, I've made further personal revelations about *Matilda* since rehearsals began. During this time in our nation where fairness and intelligence are not always valued and consequences don't always commiserate with actions, *Matilda's* particular brand of "street justice" is personally satisfying. And as I prepare for new adventures in my own life, *Matilda's* revelation that "Nobody but me is going to change my story" has resonated. In closing this chapter at ZACH, I am left wiser, more empowered and extremely grateful for being supported in doing what I always dreamed of "When I Grow Up".

Abe Reybold  
Associate Artistic Director

## Roald Dahl's *Matilda* The Musical Director's Notes



Photo: Chloe Van De Graff. KirkTuck.com

This show is also a celebration for Abe Reybold, who I have had the honor of directing this show with, and who will be missed greatly as he moves on to the next chapter of his life. Abe has been essential in growing our Theatre for Families program that buses in over 40,000 kids each year, over 60% from low income schools, many seeing theatre for the first time. Having Abe's professionalism, humor, and vast experience has made every show he directed as high quality as any show you would see for adults. Many young people in Austin have benefited from the gift of his talents.

Finally, this show celebrates young people. In the show, Matilda sings "Mustn't let a little thing like little stop you." The character of Matilda and the young people in the play represent the resilience, intelligence, and compassion of the next generation. Whether it's fighting to save our planet or make a world that is more fair and kind, she represents of the generation to come. This story reminds us, that when they grow up, we are in good hands.

*Matilda The Musical* is a celebration of many things for me. At its core, it is a celebration of the Education program and the tremendous growth it has with my team: Chad Dike, Jen Young, Kate Shaw, Josh Wechsler, Shannon Fox, and Hannah Enright. You will see the impact and growth of this program onstage in the talent and training of our students. I owe an extra acknowledgment to Jen Young for growing the Pre-Professional Program which has become one of the best musical theatre training programs in the country.

Thank you for being a part of this celebration!

Nat Miller  
Associate Artistic Director



## Roald Dahl's *Matilda* The Musical Artistic Team

**JEN YOUNG MAHLSTEDT** (Choreographer) – ZACH: *Matilda The Musical*, *Goodnight Moon*, *Frog and Toad*, 33 variations, and *Rockin' Christmas Party*. ZACH Pre-Professional Production Direction and Choreography: *Feedback*, *Find Your Light*, *The Best of Broadway*, *Too Darn Fosse*, *Steppin' out*, *Annie Jr.*, *That's Entertainment*, *MixTape*, *Into The Woods*. Jen oversees the Pre-Professional Company and the ZACH Performing Arts Academy. OTHER (choreography): *West Side Story*, *The Music Man*, *Damn Yankees*, *Anything Goes*, *Evita*, and *Chicago*. ZACH (performance): *A Christmas Carol* (Gwendolyn), *Disney's Beauty and the Beast* (Babette), *Disney's Mary Poppins* (Mrs. Banks), *Les Misérables* (Cosette), *Ragtime* (Evelyn Nesbit). REGIONAL: *Damn Yankees* (Lola); *Kiss Me*, *Kate* (Bianca); *Dames at Sea* (Ruby/US); *The Best Little Whorehouse in Texas*; *West Side Story* (Velma), *A Chorus Line* (Val), and *Guys and Dolls*. Houston Rocket PD (NBA).

**MICHELLE NEY** (Scenic Designer) – ZACH: *Singin' in the Rain*, *Lady Day at Emerson's Bar & Grill*; *Tribes*; *Mothers and Sons*; *A Christmas Story*; and *Harvey*. REGIONAL THEATRE: *Gulls at The Theatre* at Boston Court; *The Glass Menagerie*; at The Colony Theatre: *Measure for Measure*, *Two Gentlemen of Verona*, *Comedy of Errors*, and *The Merry Wives of Windsor* at Illinois Shakespeare Festival; *La Pietra del Paragone* and *La bohème* at Austin Lyric Opera; *Two Booths & A Lincoln*, *A Midsummer Night's Dream*, and *Tartuffe* at Idaho Repertory Theatre; *Macbeth* and *An Ideal Husband* at Austin Shakespeare; *Cymbeline*, *Henry IV Part I*, and *Shenandoah* at Texas Shakespeare Festival. Film: *Heathens*. Michelle is a Professor of Theatrical Design at Texas State University. Visit: [www.michelleneydesigns.com](http://www.michelleneydesigns.com).

**STEPHANIE BUSING** (Scenic and Projection Designer) is a video projection and scenic designer for live performances and spaces. She graduated from the University of Texas with an M.F.A. in Theatrical Design: Integrated Media in 2014 and now designs for theatre, dance, opera, musicals, exhibits, and symphonies. Recent designs include: *Notes From the Field*, *Disney's Mary Poppins* (video, ZACH), *Into the Wild* (video/scenery, Encore Musical Theatre), *Wanderlust Dance VC* in Basque Country (video, ZAWP), *Flight and Fall* (exhibit, UMLAUF), *Ragtime* (video, Grand Rapids Civic Theatre), and *In the Heights* (scenery/video, Crosswell Opera House). Stephanie has been designing and painting with ZACH since 2012.

**SUSAN BRANCH TOWNE** (Costume Designer) – ZACH: 30 credits including *Once*, *Disney's Beauty and the Beast*, *Sunday in the Park with George*, *One Man, Two Guvnors*; *A Christmas Carol*; *Sophisticated Ladies*; *The Who's Tommy*; *One Night with Janis Joplin*; *Ragtime*; *Hairspray*; and *The Drowsy Chaperone*. ADDITIONAL CREDITS: *The Magic Flute* for Ballet Austin, *The Bat* Austin Lyric Opera; *She Loves Me*, *Hamlet*, *The Secret Garden*, *Carousel* and many more at St. Edward's University where she is an Assistant Professor. Susan's more than 200 professional credits include productions at Denver Center Theatre Company, Repertory Theatre of St. Louis, Syracuse Stage, Alabama Shakespeare Festival, Pioneer Theatre Company, Utah Shakespeare Festival, New York City Opera, as well as Off-Broadway. Susan holds a B.F.A. from Carnegie-Mellon University and an M.F.A. from the Yale School of Drama, and is a 30-year member of United Scenic Artists, Local 829.

**SERRET JENSEN** (Hair and Makeup Designer) – ZACH: *Once*, *Disney's Beauty and the Beast*, *Sunday in the Park with George*, *Singin' in the Rain*, *Lady Day at Emerson's Bar & Grill*, *The Great Society*, *Priscilla, Queen of the Desert*; *Disney's Mary Poppins*; *One Man, Two Guvnors*; *Mothers and Sons*; *Peter and the Starcatcher*; *A Christmas Carol*; *The King and I*; *The Who's Tommy*; *The Gospel at Colonus*; *In the Next Room, or the vibrator play*; *A Christmas Story*; *Les Misérables*; *Mad Beat Hip & Gone*; *Spring Awakening*. Originally from Houston, she has been the resident designer for The Alley Theatre, Divergence Vocal Theatre, body suspension group C.o.R.E., and other performance art groups. She has worked on productions with Houston Grand Opera, Austin Lyric Opera, Houston Ballet, Theater Under the Stars, and the Society of Performing Arts, and several national tours.

**MATTHEW WEBB** (Lighting Designer) – ZACH: *Singin' in the Rain*; *Priscilla, Queen of the Desert* While at ZACH, Matt designed the lights for *Les Misérables*, *The King and I*, *Peter and the Starcatcher*, *Harvey*, and *One Night with Janis Joplin* (which he also lit for San Jose Repertory Theatre.) In Austin, Matt has also designed two productions for Mary Moody Northen Theatre and one for Austin Community College. Previously, Matt worked for the Arkansas Repertory Theatre in Little Rock, designing over a dozen productions including *Hamlet*, *The 39 Steps*, *Cat on a Hot Tin Roof*, *A Raisin in the Sun*, and *It Happened in Little Rock* (featured on the cover of American Theatre.)

## Roald Dahl's *Matilda* The Musical Artistic Team

**CRAIG BROCK** (Sound Design) is ZACH's resident sound designer, and has worked as a recording engineer and music producer since 1989. ZACH: *Hedwig and the Angry Inch*; *Once*; *Disney's Beauty and the Beast*; *Lady Day at Emerson's Bar & Grill*; *The Great Society*; *Priscilla, Queen of the Desert*; *Disney's Mary Poppins*; *One Man, Two Guvnors*; *Sophisticated Ladies*; *Mothers and Sons*; *All The Way*; *Peter and the Starcatcher*; *A Christmas Carol*; *The King and I*; *The Who's Tommy*; *The Gospel at Colonus*; *A Christmas Story*; *Les Misérables*; *One Night with Janis Joplin*; *Ragtime*; *White Christmas*; *Xanadu*; *The Laramie Project*; *Next to Normal*; *RENT*; *The Drowsy Chaperone*; and *Porgy and Bess*.

**SCOTT GROH** (Set and Properties Design) is ZACH Theatre's Resident Properties Designer and created prop designs for *Hedwig and the Angry Inch*, *Once*, *Disney's Beauty and the Beast*, *Sunday in the Park with George*, *A Christmas Carol*; *A Year with Frog and Toad*; *The Who's Tommy*; *Pinocchio*; *The Gospel at Colonus*; *In the Next Room, or the vibrator play*; *A Christmas Story*; *This Wonderful Life*; *Les Misérables*, and *One Night with Janis Joplin*. NATIONAL: *Fiddler on the Roof*, *Blast!*, *All Shook Up*, and *Arthur Live!*. REGIONAL: Colorado Shakespeare Festival, SeaSide Music Theatre, La MaMa Experimental Theatre Club, and Porthouse Theatre. [scottgrohdesign.com](http://scottgrohdesign.com)

**AMANDA COOLEY DAVIS** (Dialect Coach) ZACH: *Notes From the Field*; *Hedwig and the Angry Inch*; *Once*; *Disney's Beauty and the Beast*; *Heisenberg*; *The Curious Incident of the Dog in the Night-Time*; *The Great Society*; *Priscilla, Queen of the Desert*; *Disney's Mary Poppins*; *One Man, Two Guvnors*. JARROTT PRODUCTIONS: *The Children*; *Prodigal Son*; *The Herd*; *The Price*; *Freud's Last Session*. TRINITY STREET PLAYERS/AUSTIN JEWISH REPERTORY THEATRE: *Kindertransport*. TRAINING: M.F.A. in Acting - Brooklyn College, M.A. in Theatre Arts - San Diego State University, A.B. in Theatre - Davidson College.

**CATHERINE ANNE TUCKER** (Stage Manager) – ZACH: *Hedwig and the Angry Inch*, *Once*, *Disney's Beauty and the Beast*, *Sunday in the Park with George*, *The Curious Incident of the Dog in the Night-Time*, *Singin' in the Rain*, *Million Dollar Quartet*; *Lady Day at Emerson's Bar & Grill*; *The LBJ Plays*: *All the Way* and *The Great Society*; *Priscilla, Queen of the Desert*; *Disney's Mary Poppins*; *Red Hot Patriot*; *The Kick Ass Wit* of Molly Ivins; *ANN*; *Caroline, or Change*; *Dave*

*Steakley's* version of *A Christmas Carol* for the past five years; and *Peter and the Starcatcher* with Lyric's Michael Baron. NEW YORK: *Lapsburgh Layover* (Ars Nova); *Be A Good Little Widow* (Ars Nova), and *I Never Sang for My Father* (Keen Theatre Co.). Catherine studied theatre at Southern Oregon University in Ashland, Ore., including an internship at the Oregon Shakespeare Festival.

**CHERI PROUGH DEVOL** (Associate Scenic Designer) – REGIONAL: Porthouse Theatre (Ohio), Texas Shakespeare Festival, and Barter Theatre (Virginia) where she designed lighting and/or scenery for over 150 productions as Resident Designer, including the world premieres of Deborah Brevoort's *Blue Sky Boys*, and Richard Alfieri's *Revolutions*. Recent local credits include: *All Shook Up* (Scenic and Lighting Design—Zilker Theatre Productions) *The Tempest* (Scenic Design—TXST University) and *A Midsummer Night's Dream* (Lighting Design—TXST University). M.F.A., University of Texas at Austin. To view more of her work please visit [www.devoul-design.net](http://www.devoul-design.net).

**MEGAN KATHLEEN SMITH** (Assistant Stage Manager) – ZACH: Stage Management for *Once*, *Disney's Beauty and the Beast*, *Goodnight Moon*, *Singin' in the Rain*, *Million Dollar Quartet*, *In the Heights*, *ji's arcade*, *The Great Society*, *Charlotte's Web*, *Buyer & Cellar*, *Alice in Wonderland*, *Tribes*, *Winnie the Pooh*, *Cenicienta*, *A Christmas Carol* (2014 and 2017), *The Cat in the Hat*, *A Christmas Story*, *Holiday Heroes*, and HCA's *The Little Mermaid*. REGIONAL: *Guys and Dolls* (TexARTS), *The Taming of the Shrew*, and *The Invention of Love* (Austin Shakespeare), *Plaza Suite* and *To Kill a Mockingbird* (Judson Theatre Company). Megan holds a Bachelor's Degree in Theatre from the University of Kansas.

**KAITLYN "KAT" KENNEDY** (Assistant Stage Manager) – ZACH: *Tortoise and Hare*; *Sunday in the Park with George*; *The Lion, the Witch and the Wardrobe*; *Elephant and Piggie: We're in a Play!*; *Charlotte's Web*; *One Man, Two Guvnors*; *Priscilla, Queen of the Desert*; *James and the Giant Peach*; ZACH's *Christmas Carol* 2015 and 2016; *Evita*. OTHER: Penfold Theatre's *Murder on the Rails* 2014 and 2018; Zilker Theatre Production's *Little Shop of Horrors*; *Into the Woods*; *Arabian Nights*; *Dead Man's Cell Phone*; *Legally Blonde The Musical*; *A Midsummer's Night Dream* at Baylor University Theatre. Kat studied Theatre Design & Technology at Baylor University with an emphasis in Stage Management.