



LOOK BACK IN ANGER

BY JOHN OSBORNE

DIRECTED BY TYLER KING

NOV. 28 - DEC. 14, 2011

THE OFF CENTER



OUT OF CONTEXT PRODUCTIONS PRESENTS

LOOK BACK IN ANGER

Written by John Osborne

Setting:

An attic flat in the Midlands, 1956.

ACT ONE

Early Evening.

ACT TWO

Scene I - Two weeks later.

Scene II - The following evening.

ACT THREE

Scene I - Several months later.

Scene II - A few minutes later.

There will be two ten-minute intermissions.

Produced by special arrangement with SG Phillips.

CAST

Jimmy Porter.....	Zac Carr
Cliff Lewis.....	Michael Balagia
Alison Porter.....	Emma Martinsen
Helena Charles.....	Emily Donald
Colonel Redfern.....	Donald Bayne

PRODUCTION STAFF AND CREW

Director.....	Tyler King
Production Stage Manager.....	Sadie Hollifield
Stage Manager.....	Tyler Mount
Assistant Stage Manager.....	Corinne Mears
Scenic & Costume Designer.....	Leslie Turner
Lighting & Sound Designer.....	Becca Plunkett
Props/Set Dressing.....	Leslie Turner, Johnny Trillayes
Technical Director.....	Cameron Allen
Box Office Manager.....	Shannon Bishop
House Managers.....	Abraham Ramirez, Chris Weihert, Jessica Hughes, Matt Cragg
Poster Design.....	Tyler King
Photography.....	Sam Allen

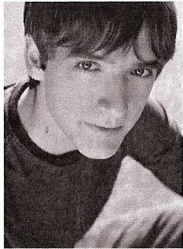
CHECK OUT OCP'S NEXT SHOW!

Somewhere in Utopia

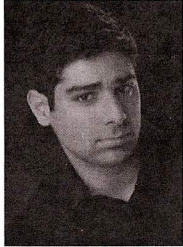
By Jared J. Stein

Directed by Becca Plunkett

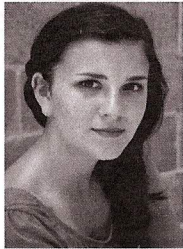
BIOGRAPHIES



Zachary Carr (Jimmy Porter) is a recent graduate of Southwestern University's Sarofim School of Fine Arts and is currently working and living in Austin. Previous shows include *The Pillowman* (Katurian), *Buried Child* (Tilden), and *The Country Wife* (Horner). International work includes *Phaedra's Love* (Hippolytus) as part of the Rhodopi International Theatre Collective (Smolyan, Bulgaria). An avid improviser - Zac has also studied long-form improv at the iO Theater in Chicago under the direction of Charna Halpern.



Michael Balagia (Cliff Lewis) is excited to be performing in Out of Context's inaugural season. Michael has previously appeared in various productions including *Backstory* (Ethan), *Urinetown* (Hot Blades Harry), *Godspell* (Jesus) and *The Rocky Horror Picture Show* (Dr. Scott). A graduate of Southwestern University, Michael has also spent time training at the iO in Chicago and currently serves as Executive Director for Out of Context Productions.



Emma Martinsen (Alison Porter) is excited to be working on this show with such a wonderful group of talented artists! Emma's previous acting credits include: *The Cover of Life* (Addie Mae), *Voice of the Prairie* (Frankie), and *Daddy's Dyin' Who's got the Will?* (Sarah Lee). She is proud to be one of the founders of the Theater company, Bit of a Stretch, with which she co-directed *Floyd Collins* by Adam Guettel. She currently attends Southwestern University where she hopes to continue growing as both an actor and director.



Emily Donald (Helena Charles) is absolutely delighted to join Out of Context Productions this season. She has appeared in Summer Stock Austin's *Urinetown*, *A Year With Frog and Toad*, and *Sweet Charity*. Emily studies Theatre at St. Edward's University with an emphasis in performance and will appear in the Mary Moody Northern Theatre's, *The Crucible*, in February. Many thanks to Mom and Dad, sisters, friends, the cast and crew, and my Tyler. And always, may all the glory be to God.



Donald Bayne (Colonel Redfern) is excited to be working with Out of Context Productions on their inaugural season. Previously he has appeared in *Laramie Project: Ten Years Later* (Father Roger & others), *The Duck Variations* (Emil, George) and *Night of the Iguana* (Nonno). A graduate of Rice University, Donald was the Artistic Director of the First Repertory Theater of San Antonio and a founding member of the Main Street Theater of Houston.

Sadie Hollifield (Production Stage Manager) most recently worked as the PSM for Summer Stock Austin's production of *Urinetown* and was the SM for Mary Moody Northern Theatre's productions of *The Further Adventures of Hedda Gabler*, & *Carousel*. She has stage managed several productions which include *Side Man*, *Waving Goodbye*, *Steel Magnolias*, *A Streetcar Named Desire*, and various theatre festivals. Sadie is currently a sophomore at St. Edward's University majoring in theatre management. She is very excited to be a part of the inaugural production of Out of Context Productions and would like to thank Tyler King for his passion and commitment to the arts. She would also like to thank her little sister, Shaylie and Tyler Mount for always supporting her in her endeavors and being the proverbial wind beneath her wings.

Tyler King (Director) is a graduate of Southwestern University and co-founder of the company Out of Context Productions which received four ATE nominations for its production of Mark Ravenhill's *Shoot/Get Treasure/Repeat* in 2010 (Directed by Becca Plunkett). He has worked internationally in London in the new playwriting sector, in Bulgaria as a part of the Rhodopi International Theatre Laboratory and in Macedonia as the Assistant Director to Jared J. Stein on the National premiere of *Angels in America*. Previously Tyler directed Pirandello's *The Man with the Flower in His Mouth* and Martin McDonagh's *The Pillowman* as part of Southwestern's 2009 and 2011 season.

Becca Plunkett (Lighting & Sound Design) is a graduate of Southwestern University and has previously directed productions of *Mud* by Marie Irene Fornes, *Shoot/Get Treasure/Repeat* by Mark Ravenhill and *The Fifth Sun* (a devised piece). She has also assistant directed on a variety of shows including *A Samuel Beckett Cabaret*, *Escape from Happiness* and *Buried Child*. Becca will be directing Out of Context's upcoming production of *Somewhere in Utopia* for Frontera Fest 2012.

Leslie Turner (Scenic, Costume and Properties Design) Leslie Turner is a scenic designer, costume designer, scenic artist, and actress. Her recent scenic design credits include *The Yellow Boat*, *Mud*, *Escape from Happiness*, *Urinetown*, *Pinocchio*, *The Fifth Sun*, and *Back Story*, all at Southwestern University. She has also worked with Out of Context as the scenic designer for *Shoot/Get Treasure/Repeat*. Her costume designs include *Mud* at Southwestern University and an international collaboration with Theatre Dreams at NATFA. She was recently influenced by her participation in the 2011 Prague Quadrennial and both the 2010 and 2011 Rhodopi International Theatre Laboratories. Leslie is a graduate of Southwestern University with a BA in Theatre.

Johnny Joe Trillayes (Properties Assistant) is a senior performance major at St. Edward's University. He has assistant stage managed many productions at the Mary Moody Northern Theatre and serves as Properties Coordinator for the theatre as well. He is delighted to be working on this production alongside the extremely talented cast and crew and thanks Tyler King for the opportunity. Lastly, he sends his mother his love. Thank you for supporting the arts.

About the Company

Out of Context Productions is committed to producing, creating and collaborating to generate theatre that is new and exciting. We aim to engage audiences with a diverse mix of programming that seeks to be both entertaining and thought provoking.

What is "out of context" and why is this our name?

out of context: without the surrounding words or circumstances and so not fully understandable.

We seek to avoid easy classification within any one genre or type of theatre. We are a group that is committed to challenging both our audiences and ourselves to re-examine our convictions about theatre, about art and about life. We are passionate about new stories that need to be told and those of which we need to be reminded. We welcome the experience of working with both professionals and students - valuing both as integral to the future growth of the art form.

Thank you for coming out to support the show and feel free to shoot us an email - we're excited to hear what you have to say.

Best,

Tyler King
Artistic Director

Michael Balagia
Executive Director

www.ocplimited.com

SPECIAL THANKS

Without all of you this show would not have been possible - a huge thank you from all of us.

-Look Back in Anger Cast and Crew

Reji Thomas
Don & Janice Day
Desiderio Roybal

Jared J. Stein
Joe Carpenter
Austin Buckingham

The King Family
Mike McKelvey
Bert, Will & Steve at
Pine Street Station
Kyle Kirchoff
Mrs. Martinsen
John Ore

The Turner Family
Jeff Smith
The Rude Mechanicals
Pine Street Station
Firefly Pies
Love Balls
SG Phillips

The Balagia Family
Cobblestone Upstairs
Downstairs Antiques
Southwestern University
Theatre Department
St. Edwards University
Theatre Department

The Caring Place
Austin Furniture
Consignment
Re-Finds at The Caring
Place



"WE SHOW AND SELL FOR YOU"
PRE-OWNED & NEW FURNITURE
We're Not Like Other Furniture Stores
MON-SAT 10am-7pm • SUNDAYS 11am-6pm
PHONE (512) 218-1888 FAX (512) 494-1888
3107 South Lamar Blvd. www.austinfurniture.net
Austin TX 78704 email austinfurniture@sbcglobal.net
Keep up with us on **facebook**
AND at <http://austinfurniture.tumblr.com/>

*Cobblestone Upstairs Downstairs
Antiques*

Susan Ney Katie Ney-Zezulka

Mon. - Sat. 10am to 5:30 pm
Sun. noon to 5pm

Antiques,
Collectibles, and
lots more...

(512) 863-9607
712 S. Austin Ave.
Georgetown, TX 78626

cobblestoneantiques.net • kivedr@yahoo.com

RE-FINDS &  The Caring Place

(512) 869-4735 Fax (512) 819-9233
P.O. Box 1215 2000 Railroad Street
Georgetown, Texas
www.caringplacetx.org