



# EURYDICE

BY SARAH RUHL  
DIRECTED BY MICHELLE POLGAR

FEB. 3–13, 2011

MARY MOODY NORTHEN THEATRE



ST. EDWARD'S  
UNIVERSITY





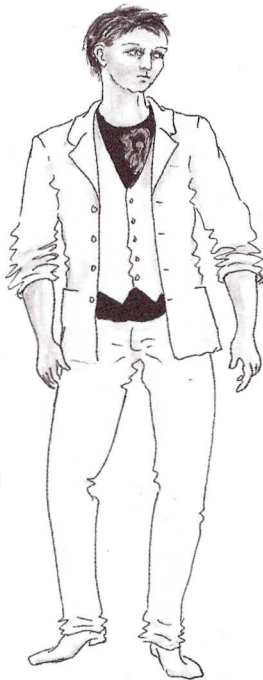
## THE COMPANY

Eurydice .....	Cassidy Schiltz**
Her Father .....	Jamie Goodwin*
Orpheus .....	Nathan Brockett**
A Chorus of Stones:	
Big Stone .....	David Cameron Allen**
Little Stone .....	Sophia Franzella**
Loud Stone .....	Kendra K. Perez**
A Nasty Interesting Man .....	David Stahl*
A Child (The Lord of the Underworld) .....	David Stahl*

### THE PLAY IS PERFORMED WITHOUT AN INTERMISSION.

*This play was originally produced by Madison Repertory Theatre, Madison, Wisconsin, August 29, 2003 (Rick Corley, Artistic Director; Tony Forman, Managing Director). Subsequently produced by Berkley Repertory Theatre in 2004 (Tony Taccone, Artistic Director; Susan Medak, Managing Director) and Yale Repertory Theatre (James Bundy, Artistic Director; Victoria Nolan, Managing Director). Produced in 2007 by Second Stage Theatre, New York, (Carole Rothman, Artistic Director).*

*Costume renderings by Buffy Manners*

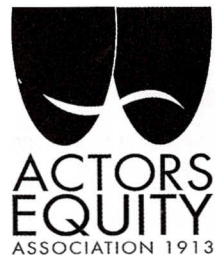


\* **Member, Actors' Equity Association, the union of professional actors and stage managers in the United States**

\*\* **Equity Member Candidate**

**Mary Moody Northen Theatre is a member of the Theatre Communications Group.**

**ACTORS' EQUITY ASSOCIATION** (AEA) was founded in 1913 as the first of the American actor unions.



Equity's mission is to advance, promote and foster the art of live theatre as an essential component of our society. Today, Equity represents more than 45,000 actors, singers, dancers and stage managers working in hundreds of theatres across the United States. Equity members are dedicated to working in the theatre as a profession, upholding the highest artistic standards. Equity negotiates wages and working conditions and provides a wide range of benefits including health and pension plans for its members. Through its agreement with Equity, this theatre has committed to the fair treatment of the actors and stage managers employed in this production. AEA is a member of the AFL-CIO and is affiliated with FIA, an international organization of performing arts unions. For more information, visit [www.actorsequity.org](http://www.actorsequity.org).

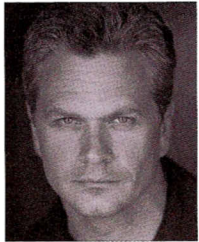
## PRODUCTION STAFF

Choreographers .....	Danny Herman, Rocker Verastique
Music Director .....	Lyn Koenning
Assistant Director .....	Kel Sanders
Assistant to the Costume Designer .....	Helen Ralowicz
Assistant to the Lighting Designer .....	Skyler McIntosh
Assistant to the Master Electrician .....	Kris Carpenter
Lead Stage Manager .....	Cassandra Castillo**
Assistant Stage Managers .....	Curtis Allmon**, Jessica Angima**, Nicholas Campagna**, Tyler Mount**, Johnny Joe Trillayez**
Scenic Charge Artist .....	Leilah Stewart
Assistant to the Technical Director .....	George Marsolek
Properties Coordinator .....	Jeanine Lisa
Properties Lead Assistant .....	Jon Wayne Martin
Properties Crew .....	Paloma Bermudez, Devon Brownlow
Hair and Make-up Design Mentor .....	Tara Cooper
Light Board Operator .....	Andrew Zimmer
Sound Board Operator .....	Kyle Housworth
Spot Operators .....	Shelby Crow, Alyssa Dillard, Hannah Fonder, Meredith Stein
Running Crew .....	Sadie Hollifield, Caitlin Jackson
Sound Department Staff .....	Candice Rogers
Scene Shop Staff .....	Cameron Allen, Tori Francis, Zacharie B. Hennard, George Marsolek, Zach Miranda, Candice Rogers, Carli Werner
Costume Shop Staff .....	Kera Blay, Jordyn Campbell, Eileen Chaffer, Emily Donald, Aidan Liller, Meredith Montgomery, Helen Ralowicz
Stitchers .....	Aimee Kandl, Tanya Olande
Box Office Manager .....	Shannon Bishop
Box Office Staff .....	Sadie Hollifield, Alyssa Johnson, Kel Sanders
House Manager .....	Zorica Simic
House Crew .....	Austin Amelio, Sabrina Hollett, Shannon McDermott, Ben Myers
Head Dresser .....	Emily Eubank
Dressers .....	Joe Arellano, Hope Breeding, Violet Cantu and the students of THAR 1331
Laundry .....	Callie Boatman, Jackie Harper
Costume Crew .....	Kera Blay, Annie Bond, Jordan Campbell, Katie Comardo, Emily Eubank, Marrett Hanes, Jackie Harper, Ashley Kramer, Cassidy Schiltz, Sean Slusher, Bonnie Sturdivant and the students of THAR 1331
Scenic Crew .....	Austin Amelio, Kaleb Dworsky, Tori Francis, Drew Kimball, Zach Miranda, Danielle Ploeger, Thomas Pietrzak, Jennifer Scott, Carli Werner and the students of THAR 1330
Make-up/Hair Crew .....	Marrett Hanes, Liz Newchurch
Lighting Crew .....	Gena Castillo, Mary Cartwright, Mitch Harris, Jacquelyn Longoria, and the students of THAR 1330 and THAR 3323



## THE COMPANY

**JAMIE GOODWIN** (*The Father*) was previously seen at the Mary Moody Northern Theatre in *City of Angels* and *bobrauschenbergamerica*. His most recent role in the Austin area was Adolpho in Zach Theatre's production of *The Drowsy*



*Chaperone*. Other local theatre credits include the world premiere of Steven Dietz's *Shooting Star*, *Doubt*, *An Almost Holy Picture*, *Present Laughter* (B. Iden Payne Award), and *Urinetown* (B. Iden Payne Nominee). As time goes by, he is becoming less known for his role as Johnny Bauer on CBS's daytime drama *Guiding Light* and as Kevin Anderson on NBC's *Another World*. But he still remains quite popular as the "gherkin guy," one of Samanthas beaus on *Sex and the City*. Other television: *Ed*, *Third Watch*, *Hack*, *Law & Order*, *Law & Order SVU*. Film: *Serendipity* (Nick Roberts), *Let It Be Me* (Bud) and *The Perfect You*. Off Broadway: New York Shakespeare Festival's *Two Gentlemen of Verona* (Valentine), Public Theatre's *Julius Caesar* (Marullus), *Twelfth Night* (Orsino). Regional: *Gross Indecencies* (Oscar Wilde), *Unsinkable Molly Brown* (Johnny Brown), *Seven Brides for Seven Brothers* (Adam). Jamie received his MFA in Acting at SMU's Meadows School of the Arts.

**DAVID STAHL** (*Nasty Interesting Man/A*



*Child* (Lord of the *Underworld*)) returns to MMNT after appearing as Galileo in *The Life of Galileo*. David received his BFA from Southwestern University in Georgetown and his MFA from the University

of Texas at Austin. He is a member of the Board of Directors and Acting Company of Austin Playhouse, where he has played roles such as David Frost in *Frost/Nixon*, Phillippe in *Heroes*,

Nixon in *The Dead Presidents Club*, Henry in *Travesties*, Bernard in *Arcadia*, Werner Heisenberg in *Copenhagen*, Elliot in *Private Lives*, Bernard in *House and Garden*, Sir Thomas More in *A Man For All Seasons*, Felix in *The Odd Couple*, and Drummond in *Inherit the Wind*, among others. He has also appeared recently in *The Glass Menagerie*, *Nightswim*, *A Christmas Carol*, *Mrs. Warren's Profession*, *Art*, *Prides Crossing*, *Henry V*, *Richard III*, and *The Merry Wives of Windsor*. David also toured with the Greater Tuna Company's production of *The Foreigner* as Jaston Williams' understudy and as a dresser for *A Tuna Christmas*. Currently, David is a Lecturer in the Theatre and Dance Department at Texas State University in San Marcos.

**DAVID CAMERON ALLEN '13** (*Big Stone*)

This is Cameron's second time appearing on the MMNT stage after last season's *The Life of Galileo*. He is currently studying Theater Arts here at St. Edward's. He is very excited to be on stage again and would like to thank all of his wonderful friends for putting up with him.

**NATHAN BROCKETT '11** (*Orpheus*,

*Original Music*) feels grateful to be sharing the experience of this show with this cast and crew. He has been seen in previous MMNT productions including *Three Sisters*, *bobrauschenbergamerica*, *The Life of Galileo*, *Peer Gynt*, *City of Angels* and *The Imaginary Invalid*. Nathan has also worked with the Austin Playhouse and Palindrome Theatre in recent months. He would like to thank all of his inspiring peers and mentors.

**SOPHIA FRANZELLA '13** (*Little Stone*)

feels honored to be a part of the beauty and magic that is this play. She is also thrilled to be working with such a uniquely talented cast. Her previous MMNT credits include *Peer Gynt*, *City of Angels* and *The Imaginary Invalid*. She would like to thank Michelle for trusting her with this wonderful part, as well as her family for their love and immeasurable support.

**KENDRA K. PEREZ '13** (*Loud Stone*) is a Theater Arts major hoping to pursue an emphasis in performance. She recently appeared in MMNT's production of *The Imaginary Invalid* as Toinette. Her next role will be Johanna in Zach Theatre's production of *August: Osage County*. She thanks Michelle for the opportunity and guidance and her family for their continued love and support.

**CASSIDY SCHILTZ '13** (*Eurydice*) is excited to be back on the MMNT stage and to be sharing this experience with such an amazing cast and crew. Cassidy previously appeared in *City of Angels* and *The Pajama Game* (Poopsie), as well as the Ten Minute Play Festival. Apart from the MMNT stage, Cassidy has been involved with Transit Theatre Troupe and sings with the Madrigals Chamber Choir. She would like to thank Michelle Polgar for this wonderful opportunity, Bill McMillin and her friends and family for their undying support.

**SARAH GARCIA '11** (*Make-up/Hair Designer*)

Sarah's last make-up design project was for *bobrauschenbergamerica*. She has also worked on *Death and the King's Horseman*, *On The Town*, *Three Sisters*, *Cyrano De Bergerac*, *Peer Gynt* and *City of Angels*. She would like to thank Tara Cooper, her mentor who has taught her more than she can begin to imagine, her parents Sam and Adriana Garcia, for providing the funds for her to be at St. Edward's, and all of her family and friends who have supported her through it all. Love you guys!

**DANNY HERMAN** (*Choreographer*) is

an internationally recognized director, choreographer, actor and teacher. Among his many credits, Mr. Hermann appeared in the original Broadway and Off-Broadway productions of *Contact* and was Mike Costa on Broadway in *A Chorus Line*. He also appeared in the original Broadway production of *Leader of the Pack*, the original New York City Opera production of *Die Soldaten* and the original Off-Broadway production of *Big Bad Burlesque*.

**ROCKER VERASTIQUE** (*Choreographer*) appeared in the original Broadway companies of *Contact*, *Chicago*, *Victor/Victoria* and *Carousel*. His other Broadway credits include *Miss Saigon*, *Phantom of the Opera* and *Ziegfeld Follies of 1936*, as well as the world premiere productions of *Heart's Desire*, *Jekyll and Hyde*, *Spirit* and the Broadway workshop of *Fosse*. Rocker's other credits include Paul in *A Chorus Line*, Konstantine Morrisine in *On Your Toes*, *Sophisticated Ladies*, and appearances with the Feld Ballet and the Los Angeles Chamber Ballet, among others.

**LYN KOENNING** (*Music Director*) returns to

MMNT where she previously music directed and/or played piano for a number of productions, most recently *PARADE*. Lyn is a member of the University of Texas Department of Theatre and Dance faculty, where, in addition to her work as a musical director, she teaches courses in musical theater audition and performance practices, musical theater history, and musical theater acting and vocal technique. Lyn has received multiple nominations as Austin's Best Musical Director and won the Critic's Table Award in 2005 and 2010.

**BUZZ MORAN** (*Sound Designer*) has worked

as a sound designer for Rude Mechanicals, Shrewds, UT, and others, as well as being a company member with Salvage Vanguard. *Eurydice* is the sixth play Buzz has designed for MMNT. Buzz performs the archaic art of live sound effects for *The Intergalactic Nemesis*, as well as for his own Foleyvision shows at the Alamo Drafthouse, in which odd foreign films are dubbed live in the theater. He has recorded, mixed, and produced many CDs, as well as various soundtracks with Graham Reynolds. Buzz is currently working as the Music Editor for Richard Linklater's upcoming film *Bernie*, starring Jack Black.

**BUFFY MANNERS** (*Costume Designer*) is

delighted to be involved with the Mary Moody Northern Theatre's production of *Eurydice*. She is currently the resident designer for Austin Playhouse. She has been nominated

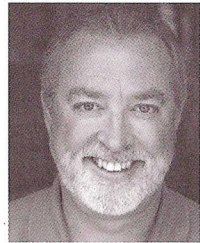


for Austin Critics' Table Awards for her work, most notably for *An Ideal Husband*, *Macbeth*, *The Merry Wives of Windsor*, *Henry V* and *Mrs. Warren's Profession*. She has also been nominated on several occasions for B. Iden Payne Awards, most recently for Austin Shakespeare's production of *The Rivals*.

**KATHRYN EADER** (*Lighting Designer*) most recently designed *Who's Afraid of Virginia Woolf?* here at MMNT. In addition to her role as assistant professor of Theater Design for St. Edward's, Kathryn is the resident lighting designer for the Butler Opera Center at UT-Austin, where she has designed nine productions including *The Elixir of Love* and last season's *A View From the Bridge*. Other Austin credits include *The Glass Menagerie*, *Proof* and *A Christmas Carol* for the State Theatre and *Man of La Mancha* and *Sweet Charity* for Austin Musical Theatre. Kathryn comes to Austin most recently from Oklahoma City University. After completing her undergraduate degree at UT-Austin, Kathryn earned her MFA in lighting from New York University. She has worked extensively in opera with such companies as Houston Grand Opera, Portland Opera, Michigan Opera Theatre, Grande Theatre de Geneve and Lyric Opera of Chicago. Kathryn spends most of her time these days very focused on her most important productions — her three beautiful children: Josephine, Megan and Shane.

**CHASE STAGGS** (*Scene Designer*) is glad to return to MMNT and is honored to work with this talented team. Chase has been designing for stage and screen since the late Reagan era. He has been awarded Outstanding Scenic Designer by Austin Critics' Table twice and twice received nominations from B. Iden Payne for Best Scenic Design. Chase was technical director at MMNT from 2004 to 2007. He is an accomplished fine art painter and sculptor working in various media. He currently drives a 1986 Honda Civic.

**BILL MCMILLIN '79** (*Production Stage Manager*) was the first to receive a BA in Theater Arts Management from St. Edward's University. Bill is a member of Actors' Equity Association and the National Stage Managers Association.



An Austinite for 34 years, he has worked in all facets of theatrical production in virtually every theatre in town. Represented by TAG Talent, he has been on recent commercials for Chevrolet, Tractor Supply and Gunn Automotive, as well as voice and print media and several films. Bill serves on the National Council of Actors' Equity Association and is an adjunct instructor at St. Edward's, teaching Arts Administration, Professional Preparation and Stage Management.

**SARAH RUHL** (*Playwright*) has written numerous award-winning plays, including *The Clean House* (Susan Smith Blackburn Award, 2004, Pulitzer Prize finalist, PEN Award), *Melancholy Play*, *Eurydice*, *Late: a cowboy song*, *Orlando*, *Demeter*

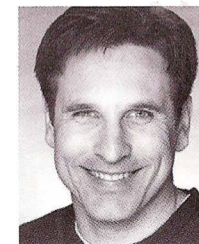


*in the City* (NAACP Image Award nomination) and *Passion Play: a cycle in three parts* (Fourth Forum Freedom Award, Kennedy Center). Her plays have been performed at Lincoln Center Theater, Second Stage Theatre, Goodman Theatre, Yale Repertory Theatre, Woolly Mammoth Theatre, Berkeley Repertory Theater, Wilma Theater, Cornerstone Theater, Madison Repertory Theatre, Clubbed Thumb and the Piven Theatre Workshop, among other theatres across the country. Her plays have been translated into German, Polish, Korean, Russian and Spanish, and have been produced internationally in London, Canada, Germany, Latvia and Poland. Sarah received her MFA from Brown University and is originally from Chicago. She is the recipient of a Helen Mer-

rill award, Whiting Writers' Award and a Macarthur Fellowship. She is a proud member of New Dramatists and 13P.

**MICHELLE S. POLGAR** (*Director*) most recently directed *The Life of Galileo* and *Cyrano de Bergerac* (Outstanding Direction, Outstanding Production of a Drama, Austin Critics' Table) for MMNT. Previous directing credits in Austin include *A Christmas Carol* (twice!), *The Woman In Black*, *Proof* and *The Glass Menagerie* for the State Theatre, and *Sherlock Holmes* for The Public Domain. By day Michelle is managing director for MMNT and teaches Arts Administration and Cultural Foundations here at St. Edward's. She holds professional management and artistic credits from such theatres as UT-Austin, Austin Shakespeare, the Cleveland Playhouse, the State Theatre, Children's Theatre of Charlotte, UNC Lab Theatre and Playmakers' Repertory Company. She thanks her husband Robi and her three children Ari, Kaitlin and Didi for their love and support. To all who have lost a loved one, this play celebrates the connections we make that bridge time, space and even death. For Donald and Brock: I will give this letter to a worm. I hope he finds you.

**DAVID M. LONG** (*MMNT Artistic Director*) is an actor, director and educator who has worked professionally on both coasts and in Japan. David has served as a faculty member at Winthrop University in South Carolina and Portland



State University in Oregon and currently serves as artistic director and assistant professor of Theater Arts at St. Edward's University. Directing credits at MMNT include *The Imaginary Invalid*, *bobrauschenbergamerica*, *Cloud 9* (Austin Critics' Table Nomination for Best Comedy), *Full Circle* (Austin Critics' Table Award for Best Comedy), *Macbeth* and *Antigone*. At MMNT, he has appeared as Stone in *City of Angels*, as Cyrano (Austin

Critics' Table Award) in *Cyrano de Bergerac* and as Leo Frank in *Parade*. David has presented acting and movement workshops throughout the country. He is an active member in both Actors' Equity Association and the Screen Actors' Guild. He would like to thank Tracy, Amelia and Alura for their patience and loving support.

With 17 years of experience and 3 Chronicle "Best Of Austin" awards under his belt ...

**FRTZ BLAW IS THE POSTER DUDE!**

Get your message to over 150 legal posting locations for only \$60 per week!

Have a flyer or poster? Then have it ...

**(512) 554-4034**

**MAUDIE'S TEX-MEX**



# MARY MOODY NORTHEN THEATRE SOCIETY

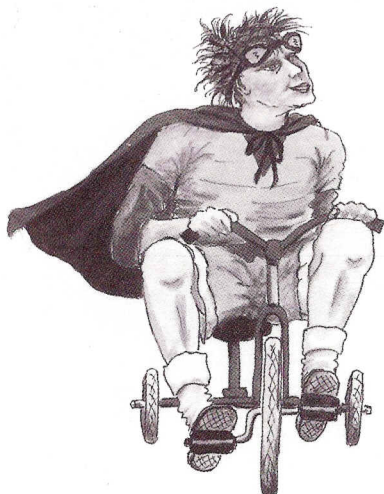
Through Mary Moody Northern Theatre, St. Edward's University Theater Arts majors work alongside professional actors, designers and directors in the creation of dynamic artistic work. Our students enjoy unparalleled professional training and an opportunity to earn points toward membership in the Actors' Equity Association, the union of professional actors and stage managers in the United States — all within the context of the university's nationally recognized liberal arts education.

Our program is made possible in part by the generous contributions of the Mary Moody Northern Theatre Society membership. Society contributions allow MMNT to provide students with resources for hands-on learning and to provide audiences with the rich production values that keep you returning to our performances year after year. Each year, Theatre Society members contribute more than \$24,000 to student scholarships, allowing us to maintain our commitment to educate a diverse group of Theater Arts students, regardless of their financial situation.

As a member of the society, you will enjoy a number of exciting benefits, including invitations to special performances and opportunities to get involved with the Theater Arts program and our students on a deeper level. Your gift may be designated to scholarships, production support or capital improvements, or you may make an unrestricted gift.

We sincerely hope you will join the Theatre Society or continue as a member by making a gift to the Mary Moody Northern Theatre today. We also invite you to encourage your friends and associates to join. For more information, contact Stephani Smolucha at [steps@stedwards.edu](mailto:steps@stedwards.edu) or 512-448-8451.

Thank you for your continued support. We look forward to seeing you again at the MMNT.



## PRESIDENT'S ASSOCIATES - GOLD (\$10,000 to \$24,999)

Rosemarie Schwarzer  
Tapestry Foundation

## PRESIDENT'S ASSOCIATES - SILVER (\$5,000 to \$9,999)

Shawn and Bruce Butler

## PRESIDENT'S ASSOCIATES - BRONZE (\$1,000 to \$4,999)

Hamilton Beazley, PhD  
Karen Bowen '86  
Father Louis T. Brusatti  
Ev Lunning Jr.  
Tracy Manier and Daniel Floyd  
Florence Mayne  
Lewis A. Meyers Jr.  
Mark and Christie Wilson

## DEAN'S CLUB (\$500 to \$999)

Ola Butler Bell  
Jay Hume  
Kimberly Livingston MAC '07  
William J. McMillin '79  
Dr. and Mrs. Matthew Pangborn

## THE HILLTOP CLUB (\$250 to \$499)

Anonymous  
Mary Blackstock  
Edna and Gary Blomquist '98  
Jean Byers  
Mr. and Mrs. Robert Campbell  
Evergreen Consulting  
Austin Doak  
Charles Gembinski Jr.  
Connie McMillan  
Dr. and Mrs. Jimmy T. Mills  
Joseph Parks '06  
Jennifer Phlieger MAHS '00  
Michelle and Robi Polgar  
Ann Scott '91  
Tracy Sherman '81  
Anne Westdyke  
Father Rick Wilkinson, CSC

## THE 1885 CLUB (\$120 to \$249)

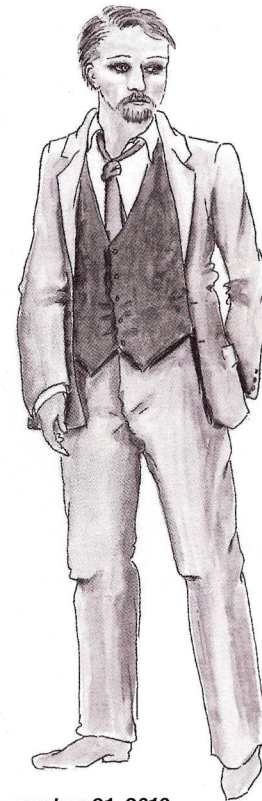
Anonymous  
Alexander Bargioni '09  
Richard and Kelly Bautch  
Peter Beilharz  
Ann Bower  
Charles Browne  
Richard Campbell  
Maria Caswell  
Kathlyn Dailey '78  
Dr. and Mrs. Daniel Deguire '69  
Johanna Daymond  
Alejandro Diaz Jr.  
Margaret Furse  
Marilyn Gaddis  
Charles and Dora Gembinski  
Michael Guerra '83  
Gerald Harrison  
Leonard Heerensperger  
Curtis Dean Hirsh  
Theresa Hobbs  
Bunny Joubert  
Timothy Jurgensen  
Janet Kazmirski  
Ethel M. Kutac  
Patrick Liddy '05  
Vicky Linsalata  
David and Tracy Long

Robert Luedecke  
Michael Massey  
Angela McCown  
Pamela G. McGrew  
Molly Minus  
New York Life Insurance Co.  
Leo Osterhaus  
Rogelio Pequeno  
Marisa Pisano Peterson  
David Prater  
Marvela L. Pritchett '02  
Dal Sanders  
Teri Varner  
Timothy Wright '91  
Ronald Young

## CONTRIBUTOR (\$50 to \$119)

Peter Austin  
Joseph Barrett  
Tara Battani '00  
Capital One Services, Inc.  
Joe Carpenter  
Charles Caudill '81  
Judy Coyne '73  
Brother Richard P. Daly, CSC '61  
Daniel Deguire '69  
Matthew Doak '05  
Michael M. Dorn  
Doug Dorst  
Michael Downer  
Dorothy Dyer  
Fidelity Investments  
Phil and Pam Friday  
Laurie Friedman-Fannin '79  
Jerome Garvey  
Theresa Garza  
Sheila Marie Gordon  
Robin and Brian Graham-Moore  
Paul Grubb  
Gerald Harrison  
Loretta Hughes  
Barbara Irvine  
Brother George Klawitter, CSC  
Michael Langowski  
Francis MacConnell  
Christopher J. Martinez  
Theresa Mancuso  
Michael Meigs  
Richard Orton  
Bernadine Rettger '91  
Mary Rist  
Adalberto Salazar  
Ronald Sawey  
Gary Silcott

Natalie Stott  
Virginia Treasure '83  
Bobby Warnecke  
Mary Wall '80  
Thomas Werner  
Jonathan Wooley



Reflects gifts and pledges received between January 1, 2009, and December 31, 2010.



2010-2011 SEASON  
**MARY MOODY NORTHEN  
THEATRE**

ST. EDWARD'S UNIVERSITY

---

**The Imaginary Invalid**

By Molière

Translated and Adapted by David Chambers

Sept. 16-26, 2010

**Who's Afraid of Virginia Woolf?**

By Edward Albee

Nov. 11-21, 2010

**Eurydice**

By Sarah Ruhl

Feb. 3-13, 2011

**On the Verge**

By Eric Overmyer

March 3-13, 2011

**Carousel**

Music by Richard Rodgers

Book and Lyrics by Oscar Hammerstein II

Based on Ferenc Molnár's Play *Liliom*

April 7-17, 2011

---

**TICKETS 448-8484**

---