

**ZACH**  
AUSTIN'S THEATRE

DAVE STEAKLEY, PRODUCING ARTISTIC DIRECTOR  
& ELISBETH CHALLENGER, MANAGING DIRECTOR  
PRESENT

**AUGUST:**  
**OSAGE COUNTY**

Written by **TRACY LETTS**  
Directed by **DAVE STEAKLEY**

- Scenic Design..... **MICHAEL RAIFORD**
- Lighting Design..... **JASON AMATO**
- Composer and Sound Design..... **ALLEN ROBERTSON**
- Costume Design..... **SUSAN BRANCH TOWNE**
- Properties Design..... **BLAKE REEVES**
- Fight Choreographer..... **TINA GRAMANN**
- Wig Design..... **WILLA KAYE WARREN**
- Sound Engineer..... **ELIOT HAYNES**
- Stage Manager..... **LISA GOERING\***
- Assistant Stage Manager..... **JESSIE DOUGLAS**

*\*Member Actors' Equity Association*

March 31 - May 22, 2011 • ZACH Theatre's Kleberg Stage

**ACKNOWLEDGEMENTS**

AUGUST: OSAGE COUNTY premiered in June 2007 at Steppenwolf Theatre Company in Chicago, Ill. Martha Lavey, Artistic Director; David Hawkanson, Executive Director. Steppenwolf's production of AUGUST: OSAGE COUNTY opened on Broadway at the Imperial Theatre on December 4, 2007. It was produced by Jeffrey Richards, Jean Doumanian, Steve Traxler, Jerry Frankel, Ostar Productions, Jennifer Manocherian, The Weinstein Company, Debra Black/Daryl Roth, Ronald & Marc Frankel/ Barbara Freitag, and Rick Steiner/Staton Bell Group. AUGUST: OSAGE COUNTY is presented by special arrangement with DRAMATIST PLAY SERVICE, INC., New York.

ZACH Theatre operates under a Small Professional Theatre contract with **ACTORS' EQUITY ASSOCIATION**, the union of professional actors and stage managers in the United States; and is a Constituent Member of **THEATRE COMMUNICATIONS GROUP (TCG)**, the prestigious association of professional theatres nationwide.



# Cast

## AUGUST: OSAGE COUNTY

(In order of appearance)

- MICHAEL HOLMES\* ..... Beverly
- KENDRA PEREZ ..... Johnna
- LANA DIETERICH ..... Violet
- IRENE WHITE ..... Ivy
- JANELLE BUCHANAN\* ..... Mattie Fae
- MICHAEL STUART\* ..... Charlie
- CHRIS GIBSON ..... Bill
- LAUREN LANE\* ..... Barbara
- CORLEY PILLSBURY ..... Jean
- THOMAS FAUSTIN HUISKING ..... Sheriff
- ELLIE ARCHER ..... Karen
- GREG BAGLIA\* ..... Steve
- JONATHAN SHULTZ\* ..... Little Charles

### UNDERSTUDY

- ROBERT GOMES\* ..... Bill, in performances May 11-15  
\* Member Actors' Equity Association

### Time and Place

A large country home outside Pawhuska, Oklahoma,  
60 miles northwest of Tulsa.

There will be two 10-minute intermissions.

"Lay Down Sally" (Eric Clapton, Marcy Levy and George E. Terry)  
© (Renewed) Throat Music Ltd (PRS) and Eric Patrick Clapton (PRS)

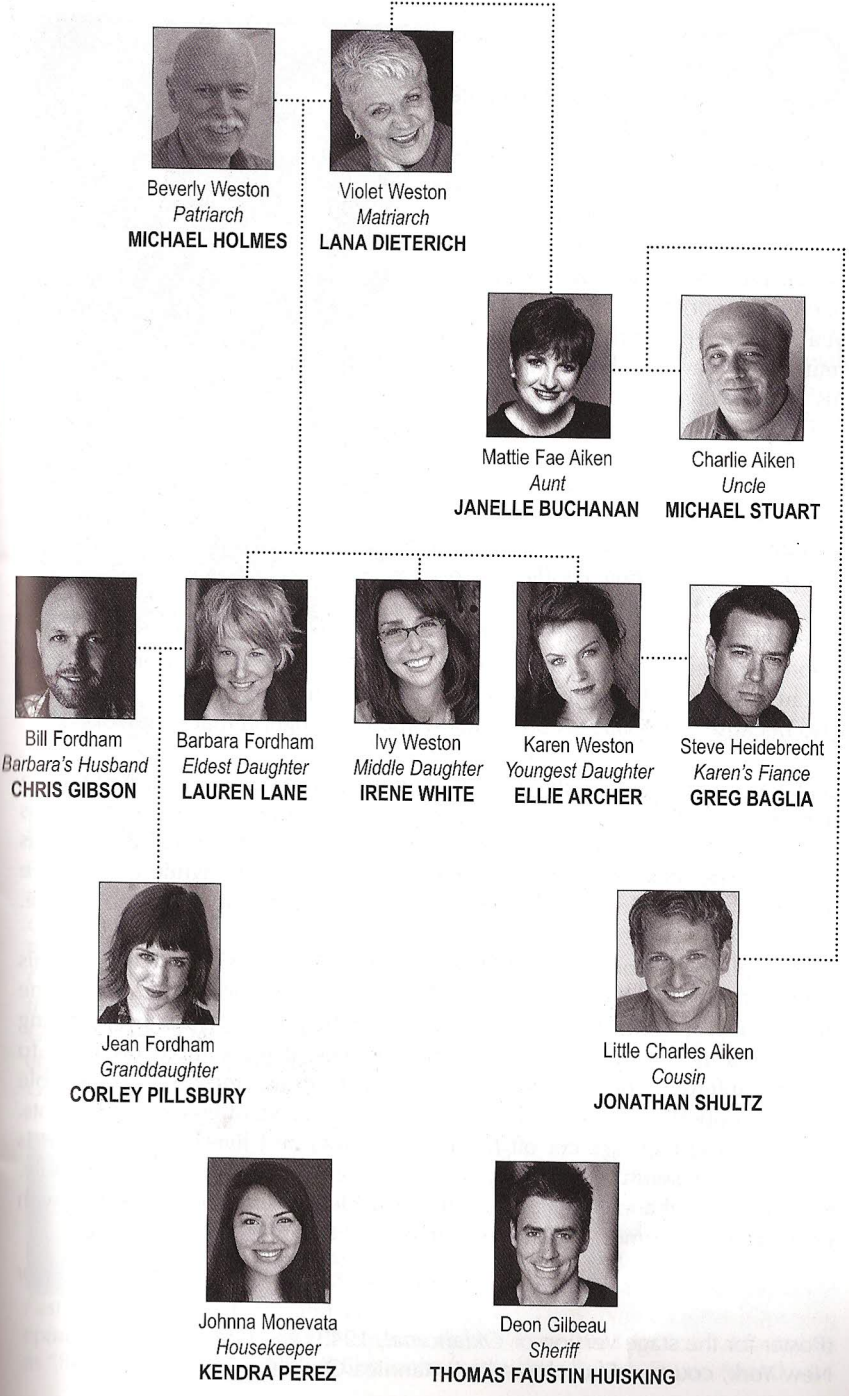
All Rights on behalf of Throat Music Ltd and Eric Patrick Clapton administered by Warner-Tamerlane Publishing Corp. All Rights on behalf of Throat Music Ltd administered by WB Music Corp. All Rights Reserved. Used by Permission.



**Any taping, filming, recording or broadcast of this play (musical or otherwise) and the taking of photographs, with or without flash, or by camera phone, is strictly prohibited. Please silence all electronic devices such as cell phones, beepers and watches during the performance.**

Drinks are welcome in the theatre, but no snacking please. Remember to turn off your cell phone and/or pager prior to the show.

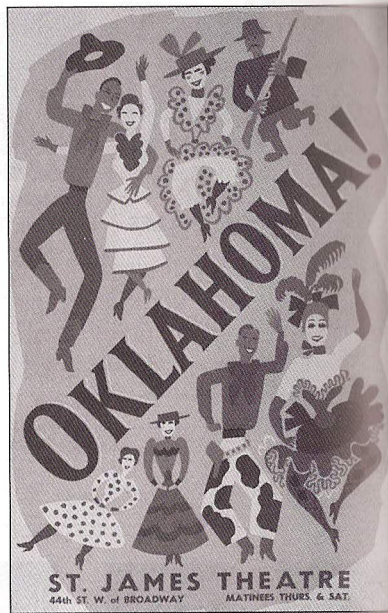
# The Weston Family Tree





## Director's Notes

**O**klahoma, the beloved Rodgers and Hammerstein classic, is often celebrated as the quintessential American musical with its simple tale of cowhands and farmers finding love and community. It caught the imagination and patriotic passion of wartime America and it endures today perhaps it reflects the way in which we like to see ourselves. Now, almost 70 years later, playwright Tracy Letts returns us to an Oklahoma family with his extraordinary play set in Osage County during the blistering hot month of August for a renewed look at America. "We keep revisiting families in theatre because it's a common denominator to everyone. Everyone has got issues in their families. And if they don't, then they aren't talking to each other," says Letts. His play is resonating deeply with audiences all across the U.S. this season, not only because of the self-identification with the dysfunctional Weston family, but also because of the larger conversation about our nation that it provokes.



Letts has described his Pulitzer Prize-winning play as a "political parable," a portrait of America, and it is no coincidence that the play begins and ends with a Native American caretaker. Some writers have described this play as reflecting the mess and the beauty of the American story, while others have focused on the addiction and toxicity that has pervaded the American psyche.

Letts employs the poem "The Hollow Men" by T.S. Eliot as a framework for his play. In the poem, the speaker describes a dead land, now filled with stone and cacti, where corpses salute the stars, detached from any reality. In trying to process the destruction that the speaker sees, it has caused his mind to become infertile – his head has been filled with straw, and he is now unable to think properly, to perceive accurately or to conceive of images or thoughts. These hollow men are cut off from one another and live in a place that is devoid of any spiritual presence, where feeling and creativity are impossible. It is a thoughtful and significant context in which to experience this play with its tremendous humor and tragedy careening head-long into each other.

– Dave Steakley, Producing Artistic Director

(Poster for the stage version of *Oklahoma!*, 1943; The Granger Collection, New York, courtesy Encyclopædia Britannica Online)

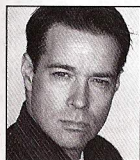
## About the Company



**ELLIE ARCHER** (*Karen*) – joins ZACH Theatre for the first time. REGIONAL THEATRE: *Icarus' Mother*, *The Dining Room*, *Split*, *Do Not Miss the Attraction*, *Day*, *Getting Out*. OTHER CREDITS: Archer has also appeared in numerous national network commercials, and worked as a stunt horseback rider/double in the film *Flesh and Bone*. She is a member of the Los Angeles-based Actor's Lab, headed by Richard Greene, and is working on a screenplay based on the life of photographer Evelyn Cameron.



**JANELLE BUCHANAN\*** (*Mattie Fae*) – AT ZACH: *Our Town*, *The Grapes of Wrath*, *Doubt*, *Omnium-Gatherum*, *The Laramie Project*, *Abundance*, *The Last Night of Ballyhoo*. REGIONAL THEATRE: *Man and Superman* and *An Ideal Husband* with Austin Shakespeare; *Ah! Wilderness* at St. Edward's University; *Laughing Wild*, *A Delicate Balance*, *Dancing at Lughnasa*, *Death and the Maiden*, *Marie and Bruce*, *Sonny's Last Shot*, and the world premiere of Tennessee Williams' newly discovered *Spring Storm*, to name only a few. Buchanan was a founder of Big State Productions and co-writer and performer in the company's long-running hit, *In the West*, which played almost every venue in Austin, many across Texas and at the Kennedy Center. Janelle is a veteran Austin actress with dozens of stage productions to her credit, as well as numerous film, commercial, industrial and print projects. AWARDS: The recipient of many B. Iden Payne and Austin Critics' Table nominations and awards for both comedy and drama.



**GREG BAGLIA\*** (*Steve*) – joins ZACH Theatre for the first time. REGIONAL THEATRE: *Private Lives* (Elyot) with Playhouse West (CA); *Why Marry?* (Ernest) and the title role of *Fortinbras* with Theatre Neo (CA); *The Pavilion* (Peter), *Miss Golden Dreams* (Joe Dimaggio), *Hunger* (Adam), *The Ecstasy of Saint Theresa* (Conley) at The Contemporary American Theatre Festival (Shepherdstown, WV); and *Cabaret* (Cliff). OFF- and OFF-OFF BROADWAY: the title role in *An Evening with Jesse James*, *A Wedding Album* (Emmit), *Comedy of Errors* (Dromio) and *Much Ado About Nothing* (Claudio) with Riverside Shakespeare Company; and *Detective Story* (Joe). TELEVISION: *Criminal Minds*, *Dave Chappelle's Show*, *All My Children*, *One Life to Live*, *As the World Turns*, *Guiding Light*. FILM: *The Mark*, *The Association*, *Uptown Girls*, *Abuelo*, *Dozers*, *Murder By Numbers*. Baglia has also contributed voice effects to more than 100 feature films and television programs, including *True Grit*, *Secretariat*, *The Big Year*, *Limitless*, *Yogi Bear* and HBO's *Mildred Pierce*.



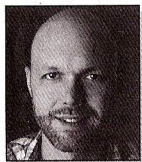
**LANA DIETERICH** (*Violet*) – is a 30-plus year veteran Austin actor. AT ZACH: *Our Town* (twice), plus *The Grapes of Wrath*, *Inspecting Carol*, *Sister Mary Ignatius Explains It All for You*, *The Quotable Dorothy Parker* (the second show on ZACH's Whisenhunt stage), *The Philadelphia Story*, *Picnic*, *The Sign in Sidney Brustein's Window*, *Who's Life Is It Anyway?* FILM/TV: *Fast Food Nation*, *Teeth* and *Lovers of Hate*; *Friday Night Lights* (Opening episode, season 3). OTHER: Dieterich received the 2003 Critics' Table Award as "Best Actress in a Comedy." She is also a four-time B. Iden Payne Award win-

\* Member Actors' Equity Association

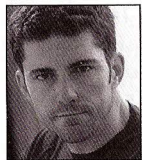


# About the Company

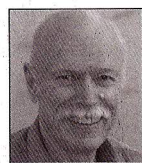
ner and a company member of Hyde Park Theatre. In 1995, Lana was selected by *The Austin Chronicle's* critic's pick as the "Best Name to See in a Theatre Program."



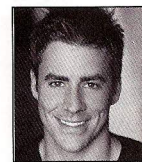
**CHRIS GIBSON** (*Bill*) – AT ZACH: *Becky's New Car*. REGIONAL THEATRE: G.B. Shaw's *Misalliance* at The Austin Playhouse, Jason Neulander's *The Intergalactic Nemesis*, RoHo Theatre Co.'s *La Putain avec les Fleurs*, Da! Collective's *Leave it to Beverly!*



**ROBERT GOMES\*** (*Understudy, Bill*) – AT ZACH: *Fiction*. BROADWAY: *The Last Night of Ballyhoo*, *Racing Demon* (Lincoln Center Theater). OFF-BROADWAY: *Only You, As Is*, *Twelfth Night*, *The Diviners* (Circle Repertory Company); *The Temperamentals*; *A Quiet End*; *Shmulnik's Waltz*. REGIONAL THEATRE: *The Winter's Tale*, *Private Lives*, *The Play's the Thing*, *Cymbeline* (Shakespeare Theatre of NJ); *Brooklyn Boy* (Florida Studio Theater); *Angels in America: Millennium Approaches* and *Perestroika* (Dallas Theater Center); *The Substance of Fire* (Seattle Rep); *Dancing at Lughnasa* and *The Three Sisters* (Pittsburgh Public Theatre); *Another Country* (Long Wharf Theatre); *The American Clock* (Huntington Theater); *A Stone Carver* (GeVa); *Childe Byron* and *Fifth of July* (Circle Rep); *The Glass Menagerie* (Fulton Opera House); *1918* (Delaware Theater Company); *Mrs. Warren's Profession* (George Street Playhouse); *We Were There* (Other Side Productions). FILM: *An Englishman in New York*, the award winning *Body/Antibody*, *Daddy* (HBO Pictures). TV: *Ed*, *Sex & the City*, *Law & Order*, *All My Children*, *As the World Turns*. Mr. Gomes is a graduate of N.Y.U. and a member of the Bruised Fruits, a comedy improv group in New York City. As a producer, he is currently in pre-production for the film *Deflated*; as a screenwriter, he is adapting the plays *Certainty* and *We Were There* for the screen. [www.robertgomes.com](http://www.robertgomes.com).



**MICHAEL HOLMES\*** (*Beverly*) – joins ZACH Theatre for the first time. BROADWAY: *Rosencrantz and Guildenstern Are Dead* (Horatio/Hamlet). REGIONAL THEATRE: Alley Theatre, Margo Jones Theatre '58 and others; American Shakespeare Festival and other Shakespeare. GUEST ARTIST: Skidmore College, Clarke University. FILM: Seven features, working with actors such as Sean Penn, James Franco, Robert Forster and many others. TELEVISION: *The Young and the Restless*, *General Hospital*. OTHER: As George Holmes at the University of Texas, many leads from Shaw to Sophocles; on the crew for B. Iden Payne's *Lear*. In Los Angeles, taught, wrote, produced and directed for 25 years at the Chandler Studio, winning many awards; was the only acting teacher recommended by the legendary Uta Hagen; taught acting several years at UCLA. Regularly performs his entertaining one-person show, *Keep a Goin'*.



**THOMAS FAUSTIN HUISCKING** (*Sheriff*) – joins ZACH Theatre for the first time. REGIONAL THEATRE: *Best Christmas Pageant Ever*, *A Christmas Carol*. TELEVISION: *Meet Jane* (Lifetime), *Framed* (IFC), *Guiding Light* (CBS). FILM: *Factory Girl* (George Hickenlooper), *American Roulette* (Alex Murphy). ADDITIONAL CREDITS: B.A. from Southwestern University in Georgetown.

\* Member Actors' Equity Association

# About the Company



**LAUREN LANE\*** (*Barbara*) – was last seen at ZACH Theatre starring in *Becky's New Car*, earning a B. Iden Payne Award nomination. She also starred in *The Clean House*, for which she received a B. Iden Payne nomination for "Best Actress in a Drama." In 2009, she won the B. Iden Payne Award for "Best Actress in a Comedy" for her work as "Sue" in *House of Several Stories*. She has worked extensively in regional theatre, most recently appearing in the critically acclaimed *A Writers Vision(s)* for FronteraFest as well as joining the New York cast for the Austin production tour of *Celebrity Autobiography*. For six years, Lauren was a company member of Tim Robbins' award winning Los Angeles-based theatre company - The Actors Gang - where she won a Drama-Logue award for her work in *Electra* directed by Oskar Eustis. She has also worked at Actors Theatre of Louisville, Berkeley Repertory Theatre, The Mark Taper Forum, The American Conservatory Theatre and The Dallas Theatre Center, among others. For six seasons, she played "C.C. Babcock" on the television show, *The Nanny*. She also played the female lead, "Chris Novak," on the TV detective show *Hunter*, as well as a recurring role on *L.A. LAW*. Last April, Lauren was seen at The Kennedy Center in *Nebraska at Noon* and *Two Socks Discuss Loss* as part of the acting company of The American College Theatre Festival. Lauren graduated from the MFA program at The American Conservatory Theatre. She is an Assistant Professor at Texas State University and lives with her daughter Kate in Austin. Lauren is represented by Collier Talent.



**KENDRA PEREZ** (*Johnna*) – joins ZACH Theatre for the first time. REGIONAL THEATRE: *The Imaginary Invalid* and *Eurydice* with Mary Moody Northen Theatre, plus leading roles in *Sound of Music*, *Auntie Mame*, *Harvey*, *Oliver!*, *Lucky*, *Stiff*, *Beauty and the Beast*, *West Side Story*, *The Trojan Women*. Kendra is currently a sophomore pursuing her B.A. in Theater Arts with an emphasis in performance at St. Edward's University.



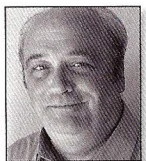
**CORLEY PILLSBURY** (*Jean*) – joins ZACH Theatre for the first time. REGIONAL THEATRE: *The Importance of Being Earnest*, *Jacques Brel is Alive and Well...*, *A Funny Thing Happened...*, *The Threepenny Opera*, *The Best Little Whorehouse in Texas* and *The Mystery of Edwin Drood* at Austin Playhouse; *Melancholy Play* with Palindrome Theatre; *Evil Dead: The Musical* (B. Iden Payne and Critics' Table nomination – "Best Actress in a Musical") with Doctuh/Mistah Productions; *Bat Boy: The Musical* with Summerstock Austin; *The Secret Garden* (Austin Critics' Table nomination – "Best Actress in a Musical") with Zilker Hillside Theatre. COLLEGE THEATRE: *Betrayal*, *Jacques Brel is Alive and Well...*, *Oklahoma!*, *Tartuffe* and *You're a Good Man, Charlie Brown*. OTHER CREDITS: Corley holds a B.F.A. in Musical Theatre from the Webster Conservatory of Theatre Arts. She is also a singer/songwriter; you can hear her music at [www.corleypillsbury.com](http://www.corleypillsbury.com).

\* Member Actors' Equity Association

IF YOU ENJOY THIS PERFORMANCE,  
TELL FRIENDS AND SHARE THE FUN!



# About the Company



**MICHAEL STUART\*** (*Charlie*) – AT ZACH: *Bleacher Bums*, *Glengarry*, *Glen Ross*, *The Boys Next Door* and *The Illusion*. As the artistic director of ONSTAGE Theatre Company (1996-2007), he directed and/or acted in more than 40 shows in Austin and small tours around Texas. For the last seven years, Mr. Stuart has been a member of the Austin Playhouse Acting Company.

You may have also seen him at the LBJ Presidential Library, where he portrayed “Senator Johnson” in an interactive exhibit giving speeches and answering questions from museum visitors about his time as Senate Majority Leader. REGIONAL THEATRE: Frank in *Educating Rita* for Sidetrack Productions, *The 39 Steps* (Clown 2), *Frost/Nixon* (Nixon), *The Importance of Being Earnest* (Dr Chasuble,) *A Funny Thing Happened On The Way To The Forum* (Pseudolus), *Stones In His Pockets* (Charlie), *The Dead Presidents Club* (LBJ), *Kiss Me Kate* (Gangster), *The Mousetrap* (Major Metcalf), *Misalliance* (Lord Summerhays), *Cat on a Hot Tin Roof* (Gooper) and *The Odd Couple* (Oscar) at Austin Playhouse; *Harvey* (Elwood P. Dowd), *True West* (Lee), *Twelfth Night* (Malvolio), *Arsenic and Old Lace* (Jonathan) and *Lone Star* (Ray) for ONSTAGE Theatre Co.; *The Drawer Boy* at Hyde Park Theatre, *A Midsummer Nights Dream* for Austin Shakespeare, *A Christmas Carol* (Scrooge) at the Stafford Opera House. OTHER CREDITS: Michael has received numerous awards and nominations from the B.Iden Payne Awards Committee and the Austin Critics’ Table. He has twice received the Partners in the Humanities Award from the Austin City Council for his efforts in support of theater in Austin.



**JONATHAN SHULTZ\*** (*Little Charles*) – joins ZACH Theatre for the first time. A native Texan, Jonathan recently returned home after stays in Las Vegas, New York City, and Los Angeles. REGIONAL THEATRE: *The Property Known as Garland* (Off-Broadway), *The Human Show* (The Kennedy Center), *Oyedipo at Kolhuni* (directed by Wole Soyinka), *The Musical Drama*

TEXAS, *Tartuffe* (title role), *Angels In America, Pt. 1*, *Hamlet*, *Cabaret*, *Fuddy Meers*, *A View From the Bridge*, *How I Learned to Drive*, *The Comedy of Errors*. ADDITIONAL CREDITS: Shultz has been featured in numerous short films, television spots, commercials, and web videos. He holds an MFA in Acting from the University of Nevada, Las Vegas, is a member of AEA and AFTRA, and is eligible for SAG membership. Jonathan currently teaches at The State Theatre School of Acting and Austin Community College, and is a certified Registered Yoga Teacher.



**IRENE WHITE** (*Ivy*) – makes her ZACH Theatre debut. REGIONAL THEATRE: *The All-Female Bonanza* at Live Ball Theatre and *Chamber Music* at the Transient Theatre in Chicago. Los Angeles theatre credits include *Blue Window*, *The Women*, *The Red Coat* and her one-woman show *Open to the Public*. TELEVISION: *Brothers & Sisters*, *Friends*, *Will & Grace*, *Scrubs*, *Frasier*, *Gilmore Girls*, *Carpoolers* (recurring) and several pilots. FILM: *Green Hornet*, *Spy Kids 4*, *Fun with Dick & Jane*. COMMERCIALS: A whole bunch. ADDITIONAL CREDITS: B.F.A. from University of Texas at Austin, graduate of Second City Training Center in Chicago and IO West in Los Angeles, current teacher and performer of long-form improvisation. [www.irenewhite.com](http://www.irenewhite.com).

\* Member Actors’ Equity Association

## Prepare to Expect Wonders!



### The New Topfer Theatre Campaign

Great cities deserve a great theatre. The Topfer Theatre is the place where our diverse, energized community will gather for a collective imaginative journey. ZACH’s new theatre is made possible by the extraordinary support of the Austin community and by the support of wonderful, invested patrons like you.

But our work has just begun – and we need your help to finish it!

The \$22 million Topfer Theater Campaign will create a first-class home for Austin’s Theatre and enable ZACH to expand its mission of providing quality professional theatre for Central Texas.

To date, the community has raised \$17.3 million – an impressive commitment – but still shy of the goal. Join us and help complete the campaign to create the theatre this city so richly deserves. With many levels of support and naming opportunities, ZACH invites you to be a permanent part of the creative future of Austin.

To learn more about the campaign, or to introduce someone to the ZACH family that may want to get involved, please contact Elisabeth Challenger or Dave Steakley:

**zach**  
AUSTIN’S THEATRE

Elisabeth Challenger,  
Managing Director  
[elisbeth@zachtheatre.org](mailto:elisbeth@zachtheatre.org)  
512.476.0594 x255

Dave Steakley,  
Producing Artistic Director  
[dave@zachtheatre.org](mailto:dave@zachtheatre.org)  
512.476.0594 x266

1510 Toomey Road • Austin, Texas 78704 • 512-476-0594 • [www.zachtheatre.org](http://www.zachtheatre.org)



## ZACH Leadership



**DAVE STEAKLEY** (*Producing Artistic Director*) – Now in his 20th season, Dave is dedicated to creating a place where our community gathers for a collective imaginative act. Dave believes theatre offers an arena in which we might be challenged to understand not just our own lives, but also the world in which we live, and is committed to creating plays and musicals that open meaningful conversations on topics that have resonance in our community. Under Dave's leadership:

**WORLD PREMIERES:** New plays by Anna Deavere Smith, Steven Dietz, Everett Quinton, John Walch, Allen Robertson & The Flaming Idiots; *365 Plays/365 Days* by Suzan-Lori Parks. ZACH served as the Austin hub of a nationwide, year-long festival; *Jesucristo Superestrella* – ZACH created the first bi-lingual adaptation of Webber and Rice's landmark musical; The Gershwin's *Porgy and Bess*, a jazz/R&B reinvention set in Katrina ravaged New Orleans, which received national acclaim from *The New York Times* and the Gershwin Estate.

**PRODUCER, DIRECTOR & CHOREOGRAPHER ON OVER 250 ZACH PRODUCTIONS INCLUDING:** *Rent, Metamorphoses, Our Town, The Grapes of Wrath, Caroline, or Change, The Clean House, Take Me Out, I Am My Own Wife, Urinetown, Crowns, Omnium-Gatherum, Hair, The Laramie Project, Hedwig, Jelly's Last Jam, The America Play, Dreamgirls, The Mystery of Irma Vep, Angels In America* and *Beehive*

**REGIONAL DIRECTING CREDITS:** Actors Theatre of Louisville, New Stage Theatre, American Heartland Theatre, WaterTower Theatre, City Theatre and Downstairs Cabaret

**PLAYWRIGHT:** *Rockin' Christmas Party, Keepin' It Weird*, a play about Austin's unique character featured on *CBS Sunday Morning*, NPR, *The Wall Street Journal* and *American Theatre*

**SERVICE TO THE THEATRE FIELD:** National Endowment for the Arts Theatre and Musical Theatre Panelist • Texas Commission on the Arts Young Masters Program Panelist • National Alliance for Musical Theatre New Works Committee

**RECOGNITION:** 2010 Spike Gillespie Kick Ass Award; 2009 Austin Dancing with the Stars Champion; 2005 Austin Circle of Theaters' Special Recognition Award for "Outstanding Contribution to Austin Theatre"; City of Austin declares May 18, 2001 as "Dave Steakley Day"; *Austin Chronicle* "Best of Austin" Readers Poll "Best Stage Director" six times; Multiple Austin Critics' Table and B. Iden Payne Awards for Outstanding Director, Choreographer; 2000 Austin Under 40 Outstanding Arts & Entertainment Award.

## ZACH Leadership



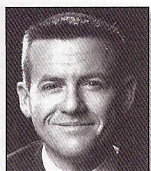
**ELISBETH CHALLENGER** (*Managing Director*) – joined ZACH Theatre as Managing Director in 2007 after having served as a non-profit consultant and the Executive Director of One World Theatre since moving to Austin. As ZACH's Managing Director, Elisabeth is responsible for a \$22M capital campaign towards the building of a new theatre as well as the management, development and finances of the organization. Under her guidance ZACH completed a Five Year Strategic Plan that will move the organization into the next phase of its significant expansion. Prior to Austin, she resided in the San Francisco bay area where she was Montalvo Arts Center's Executive Director, spending nearly 20 years with the organization. As Executive Director, Elisabeth led Montalvo's growth from a small, community-based organization into a major presenting venue and home to an internationally acclaimed artists' residency program. Other accomplishments during her tenure included increasing ticket sales from less than \$500K to more than \$4 million, expanding the patron base from 6,000 to 80,000, and raising more than \$20 million for capital projects. Earlier in her career, she served as Administrative Director for the San Francisco Boys Chorus, Education/Outreach Director of the Fairmount Theatre of the Deaf, and as department chair and faculty member of the performing arts department of The Purnell School in New Jersey. Elisabeth graduated from the Boston Conservatory of Music with a bachelor's degree in fine arts in drama and musical theatre. She attended the Harvard Business School Executive Education Program, Center for Excellence in Nonprofit Management Leaders Institute in San Jose, Calif. and served in leadership roles for the American Leadership Forum, Silicon Valley, Saratoga Rotary Club and Arts Council of Silicon Valley. She is currently serving on the National Alliance of Musical Theatre's Festival of New Musicals Committee. Elisabeth has always had a passion for the theatre and performed for many years in summer stock, dinner theatre, and semi-professional productions on the east coast and in California.

**ZACH 2011-2012 Season  
Subscriptions Go on Sale in May.  
Order Early to Get the Best Seats!**

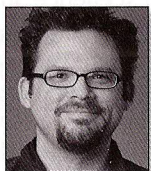
**Current ZACH Subscribers:  
Renew now and receive extra value!  
Easy online renewing at [zachtheatre.org](http://zachtheatre.org)**



## About the Artistic Staff



**MICHAEL RAIFORD** (*Scenic Design*) – is a freelance scenic and costume designer based in Austin. Michael has been a resident designer at ZACH Theatre for almost 20 years, where he has designed more than 100 productions. Recent ZACH projects include *Rent*, *The Drowsy Chaperone*, *Becky's New Car*, *Let Me Down Easy*, *Love Janis*, *Shooting Star*, *Caroline or Change* and *The Clean House*. Michael has also designed more versions of *Rockin' Christmas Party* than we can count! Michael is in his fifth season designing for the Humana Festival of New American Plays at The Actors Theater of Louisville. This season includes *Elemeno Pea* by Molly Smith Metzler and *Bob* by Peter Sinn Nachtrieb. Previous Humana projects at ATL include *Sirens* by Debra Zoe Laufer, *Fissures* by Dominique Serrand, *Phoenix* by Scott Organ and *Absalom* by Zoe Kazan. Other projects at ATL include *Jouët*, *Shipwrecked*, *Hedwig and the Angry Inch* and *The Kite Runner*. Other favorite regional productions include *Well*, *The Chosen*, and *Inherit The Wind* at Cleveland Playhouse; *The Young Lady from Rwanda* at Kansas City Repertory Theatre; *Guys and Dolls* and *Tin Types* at the Maltz Jupiter Theatre, Florida; *The Bartered Bride* at Opera Boston; *The Fantastiks* at Ford's Theatre in Washington, DC; and *What Goes Up* at New Victory Theatre, NYC. Other Austin productions include *Rigoletto* for Austin Lyric Opera, *Big Love* and *Tesla* for The Rude Mechanicals and *When Something Wonderful Ends* for our own Barbara Chisholm. Upcoming designs this season include *Carmen* at Central City Opera and *The Magic Flute* for *Ballet Austin*. Michael received his M.F.A. from the University of Texas, where he taught for 10 years, and he is a member of United Scenic Artists.



**JASON AMATO** (*Lighting Design*) – Jason's career has spanned 18 years, designing over 500 local and international shows. In addition to designing at ZACH for 10 years, he is the resident lighting designer for Austin Shakespeare, Blue Lapis Light and the Vortex. Recent shows at ZACH: *Red Hot Patriot*, *Rent*, *Metamorphoses*, *Becky's New Car*, *Our Town*, *The 25th Annual Putnam County Spelling Bee*, *The Grapes of Wrath*, *Shooting Star*, *Beehive* and *Caroline, or Change*. The Austin Critics' Table Awards has honored Jason for outstanding lighting in 25 shows. He has also received B. Iden Payne Awards for his lighting of *Troades*, *Trickster*, *The Exonerated*, *Omnium-Gatherum*, *Triskelion*, *Panoptikon*, *Despair's Book of Dreams* and *The Deluge*. In 2008, Jason received the "Outstanding Contribution to Austin Theater" award from Austin Circle of Theaters. You can view his work at [www.jasonamato.com](http://www.jasonamato.com).

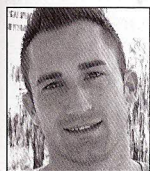


**ALLEN ROBERTSON** (*Composer/Sound Design*) – Allen is an Emmy Award®-winning co-creator of the PBS children's show *The Biscuit Brothers*, as well as a co-producer, performer, writer and composer for the show. Allen is an award-winning musical director, playwright, actor, director, sound designer and musician, and has worked on hundreds of productions from Chicago to Japan and just about everywhere in between. Additionally, he is a composer with credits including the documentary film *Beyond Black Rock*, the musical *Jouët* and the ballet *Secret Garden*.

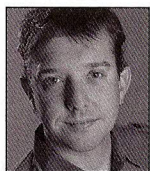
## About the Artistic Staff



**SUSAN BRANCH TOWNE** (*Costume Design*) – Previous ZACH designs: *The Drowsy Chaperone*, *Our Town*, *The 25th Annual Putnam County Spelling Bee*, *The Clean House*, *Jesus Christ Superstar/Jesucristo Superestrella*, *Present Laughter*, *Bad Dates*, *Urinetown*, *Aida*, *Cabaret*, *It Ain't Nothin' But the Blues*, *Always...Patsy Cline*, *Who's Afraid of Virginia Woolf?*, *Smokey Joe's Cafe*, *The Laramie Project* and *Jelly's Last Jam*. Other Austin credits include *The Bat* for Austin Lyric Opera; and *The Music Man*, *Seven Brides for Seven Brothers*, *Annie Get Your Gun*, *The Secret Garden* and *Crazy For You* for Zilker Theatre Productions. Favorite regional engagements include *King Lear*, *The Diary of Anne Frank*, and *A Flea In Her Ear* at the Denver Center Theatre Company; *Crowns*, *Disney's Beauty and the Beast*, *Twelfth Night*, and *The Taming of the Shrew* at the Alabama Shakespeare Festival; *My Fair Lady*, *A Midsummer Night's Dream*, *Chicago*, *Julius Caesar*, *Tartuffe*, *Richard III* and *Sophisticated Ladies* at Pioneer Theatre in Salt Lake City; and *The Producers*, *A Little Night Music*, *Sweeney Todd* and *Forum* for Milwaukee's Skylight Opera Theatre. In New York, Susan designed for New York City Opera and numerous Off-Broadway productions. Susan is a graduate of Carnegie-Mellon University and the Yale School of Drama, and is a 24-year member of United Scenic Artists, Local 829.



**BLAKE REEVES** (*Properties Design*) – AT ZACH: *Fiction*, *Red Hot Patriot*: *The Kick-Ass Wit of Molly Ivins*, *Rent*. Blake has also worked with ZACH's production team in numerous facets for *The Santaland Diaries*, *The Drowsy Chaperone*, *Metamorphoses*, *Becky's New Car*, *Our Town* and *The Flaming Idiots*. In addition to production work, he performed with the award-winning cast of *Our Town*. Blake attended Baylor University and, during his time as a student, he designed, choreographed and performed in a number of productions. He later returned to serve as the Coordinator of Special Performances for the university, producing and designing several shows.



**ELIOT HAYNES** (*Sound Engineer*) – produces sound and video. Recent ZACH Theatre design credits include video for *Red Hot Patriot*, *Rent* and *Rockin' Christmas Party*, as well as sound for *The Santaland Diaries* and *Doubt*. He enjoys being part of the ZACH Theatre production team, having served as carpenter, Scene Shop Foreman and as the Interim Assistant Technical Director. Other video credits include *The Assumption* (Refraction Arts), *I Witness* (Tutto Theatre), *A Series with a Chair and an 11-Foot Line* (Forklift Dance), *Dance Carousel* (Spank Dance) and *The E Word* (Sharon Sparlin). He is also the Technical Director for Austin's annual FuseBox Festival.

DISCOUNTS FOR GROUPS OF 8 OR MORE!  
Call Amanda at 476-0541, x221



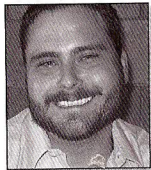
## About the Artistic Staff



**TINA GRAMANN** (*Fight Choreographer*) – Tina choreographed fights for *The Grapes of Wrath*, *Porgy and Bess*, *Take Me Out*, *Cabaret*, *Omnium Gatherum*, *Misery*, *bee-luther-hatchee*, *As You Like It*, *Whose Afraid of Virginia Woolf?* and more. Tina's weapon specializations include single sword, broadsword, rapier and dagger, and hand to hand combat. Four-times recognized by the Society of American Fight Directors, Tina received her MFA from the University of Houston School of Theatre. Tina is also the Director of ZACH's Education Department, which serves more than 60,000 students a year ages three and up through a variety of classes and performances for children.



**WILLA KAYE WARREN** (*Wig Design*) – has designed hair for ZACH's productions of *The Drowsy Chaperone*, *Caroline, or Change*, *Keepin' It Weird*, *Hank Williams: Lost Highway*, *Aida*, *Cabaret*, *Always...Patsy Cline*, *Beehive*, *Smokey Joe's Cafe*, *Dirty Blonde*, *Hair*, *Little Shop of Horrors*, *Jelly's Last Jam*, *Master Class*, *Jouët*, *A Streetcar Named Desire*, *Evita*, *The Rocky Horror Show*, *The Mystery of Irma Vep*, *Ain't Misbehavin'*, *Angels in America*, *Tommy*, *Blues in the Night*, *The Taffetas*, *The Piano Lesson*, *Jack and Jill*, *Ruthless! The Musical*, *A Christmas Carol*, *Beehive* ('95-'2003), *Rockin' Christmas Party* ('95-'05), *Avenue X* and *Das Barbecü*. She has been working and volunteering in the Austin art community for more than 25 years.



**PAUL FLINT** (*Director of Production*) – joined ZACH Theatre in 2008. He earned his B.F.A. from Shorter College and M.F.A. from Southern Illinois University, Carbondale, with a focus on Technical Direction, Scenic Design and Arts Management. He has more than ten years experience in technical theatre and has worked as a Technical Director for eight years. His theatre credits include the Alliance Theatre in Atlanta, Ga., Glimmerglass Opera in Cooperstown, New York, Vitalist Theatre Company in Chicago, Ill., and he is a founding member of Seaside Repertory Theatre in Seaside, Florida. Paul is the author of *Managing the Creative Mind: A Technical Director's Process*.



**BLAIR HURRY** (*Costume Shop Manager*) – grew up in Austin and studied Costume Design & Technology at the University of Texas. Her costume design works at ZACH Theatre include *Metamorphoses*, *Shooting Star* (2009-2010 Season), *Farm to Market* and *Call It Courage* (ZACH's Performing Arts School). Other local designs include *Vampyress* (Vortex Theatre), *Parade: A Musical* (St. Edward's University), *The Famous Rio Grande*, *The Trojan Women* and *Cabaret* (University of Texas). Prior to ZACH, she built costumes for the Williamstown Theatre Festival, The Ohio Light Opera Company and STAGES: St. Louis. She also worked as Head of Wardrobe and Make-up for the national tour of Playhouse Disney's *The Doodlebops LIVE!* and the 2008 National tour of *The Moscow Ballet's The Great Russian Nutcracker*. She is currently an active member of the local 205 IATSE union.

## About the Artistic Staff



**LILY WILLIAMS** (*Company Manager*) – A fresh face to both Austin and ZACH Theatre, Lily brings a great deal of enthusiasm to her position as the Company Manager. She graduated from Montana State University with degrees in Media & Theatre Arts and Spanish Language & Literature. During her time in Montana, Lily served as the producer and stage manager for numerous university productions, including *The Last Acts* and Allen Ball's *Five Women Wearing the Same Dress*. She has vast experience in the film, event management and visual art worlds.



**LISA GOERING\*** (*Stage Manager*) – At ZACH: Stage Manager for *Rent*, *The Drowsy Chaperone*, *Our Town*, *The Flaming Idiots*, *The 25th Annual Putnam County Spelling Bee*, *Jesus Christ Superstar/Jesu Cristo Superestrella* and *Keepin' It Weird*, among others. She stage managed *An Ideal Husband* for Austin Shakespeare, and keeps busy working as a dresser, sound board operator and freelance seamstress/stitcher, as well as traveling regionally to work in costume shops including two summers for the Shakespeare Festival at the Old Globe Theatre in San Diego. She has appeared onstage in *Carousel* and *A Christmas Carol* at ZACH and *The Snow Queen* with Second Youth.



**JESSIE DOUGLAS** (*Assistant Stage Manager*) – AT ZACH: Assistant Stage Manager and in the ensemble for *Rent*, the Assistant Stage Manager for *Our Town*, and running crew for *Grapes of Wrath*. Jessie spent a year in Juneau, Alaska working for Perseverance Theatre as the Company/Stage Management Fellow. OTHER CREDITS: Stage Manager for *Barefoot in the Park* at Unity Theater located in Brenham, Texas; *Proof*, produced by Thunder Mountain Theater Project in Juneau, Alaska. She is a graduate from Texas State University, San Marcos, where she earned her B.A. in Theater with a Business minor.



**TRACY LETTS** (*Playwright*) – is the author of the plays *Killer Joe* and *Man from Nebraska* (named one of *Time Magazine's* "Top Ten Plays of 2003"). He is an ensemble member of the Steppenwolf Theatre Company, where his appearances include *Homebody/Kabal*, *The Dazzle*, *Glengarry Glen Ross*, *Three Days of Rain* and *Picasso at the Lapin Agile*. Film appearances include *Guinevere*, *U.S. Marshal* and *Chicago Cab*. Television appearances include *The District*, *Profiler*, *The Drew Carey Show*, *Home Improvement* and *Seinfeld*. He recently made his directing debut at the Lookingglass Theatre with Glen Berger's play *Great Men of Science Nos. 21 & 22*.

\* Member Actors' Equity Association

MAYOR OF ZACH? CHECK IN ON FOURSQUARE



## Business & Community Partners

This project is funded and supported in part by the City of Austin through the Cultural Arts Division and by a grant from the Texas Commission on the Arts and an award from the National Endowment for the Arts, which believes that a great nation deserves great art.

3M

34th Street Catering  
Alaska Airlines  
Applied Materials  
Austin American-Statesman  
Austin Catering  
Austin Community Foundation  
Beyond Tradition  
Castle Hill Fitness  
Central Market  
Conn's Appliances  
Cord Shift Realtor  
Cowgirls & Flowers  
CVM Engineering Inc.  
DAT Electric  
Diane Senterfitt  
East Austin Succulents  
Dell  
Frost Bank

Frost Media Relations  
Gables Park Plaza  
Glazer's Distributors  
Hilton Austin  
Holiday Inn – Lady Bird Lake  
House Wine  
Humana  
IKEA  
InterSource  
JPMorgan Chase  
Kirk R. Tuck Photography  
KXAN/KNVA  
LCRA Employees' United Charities  
Lola Wright Foundation  
Lyndie C Events  
Majic 95.5  
MindPop  
Mitchell Group Consulting  
OnRamp Access  
Pierce Runnells Foundation  
Premiere Party Central  
Public Eye Photography  
Rosco  
Seabrook Jones  
Second Looks  
Seawell Elam Foundation  
Seedling Foundation

Sign Effects  
SOL Marketing Concepts  
Steam Team  
Sullivan's Steakhouse  
Target  
Texas Coffee Traders  
Texas Gas Service  
The HighBall  
Time Warner Cable  
Trull Foundation  
Vineyard Brands  
Wells Fargo

### Benefits of ZACH Business Membership & Community Partnerships include:

- Ticket Perks
- Cross Promotion
- Community Relations
- Exclusive Events
- And More!

For more information, please contact Holly Wissmann, Interim Development Director at: (512) 476-0594 x232 or [holly@zachtheatre.org](mailto:holly@zachtheatre.org)

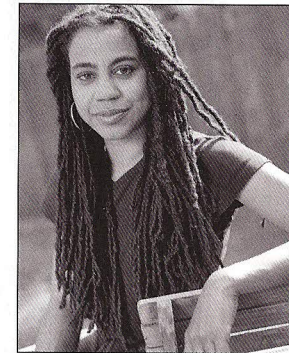
## Next on Stage:

JUNE 2 - JULY 10, 2011

### Book of Grace

A South Texas family breaks through familial borders when a young man named Snake returns home, lured by his stepmother Grace, to reunite with his father, a border patrol agent. The prodigal son confronts his father, and fences are erected as everyday life erupts into a battle for personal survival.

This project is supported in part by an award from the National Endowment for the Arts.



Written and Directed by  
Pulitzer Prize-Winner  
**Suzan-Lori Parks**

JUNE 23 - AUGUST 28, 2011

### hairspray

Book by **Mark O'Donnell & Thomas Meehan**  
Music by **Marc Shaiman** • Lyrics by **Marc Shaiman & Scott Whittman** • Based on the 1988 **John Waters** film  
Musical Direction by **Allen Robertson**  
Choreography by **Robin Lewis**  
Directed by **Dave Steakley**

The soultastic, hair hoppin', dance-til-you-drop musical! Equality cutie Tracy Turnblad has big ideas about teasin' to stratospheric hairdo heights while dancing on the Corny Collins TV record hop, and instigating a change that's gonna come. You can't stop the beat!

**IF YOU ENJOYED THIS PERFORMANCE,  
TELL FRIENDS AND SHARE THE FUN!**

**Charge Tickets Instantly by Phone or Web:**  
(512) 476-0541, x1 OR [www.zachtheatre.org](http://www.zachtheatre.org)