

THEATRE en BLOC

FAT PIG

BY NEIL LABUTE



THEATRE en BLOC . org

THEATRE en BLOC

Would like to thank these people and organizations:

Michael Balagia, Zoey Cane, Olivia Jimenez. Stregare
Cheesecake, Water2Wine, Tito's Vodka, Catherine John Ore,
Southwestern University, Stephen Torrence, Kyle Kirchoff, Caleb
Kerr, No. 4 St. James, ArtSpace, Desi Roybal, Jeff Smith, Joe
Carpenter, St. Edwards University, Villa Pizza, Zac Carr, Victoria
King, Kiss the Cook Cakes, Barbara Kyle, Lisa Green, Dougherty
Arts Center, Apple Store @ The Domain, Thomas Graves, The
Rude Mechs, Pollyanna Theatre, Man Bites Dog, Mellow
Mushroom Pizza, House Pizzeria, Austin Community College,
Marcus McQuirter, Dennis Bailey, Beth Broderick, W. A. Brenner,
KUT, Michael Lee, Aaron Sanders, Anne-Marie McKaskle, Austin
Creative Alliance, The City of Austin Cultural Arts Division,
Nathaneal Dunaway, Derek Jones, Benjamin Jones, Cody
Eastman, Alejandro Rodriguez, Zoe Tolliver, Justin Langford,
Jessica Dunn, Victoria Harrison, Lauren Pasternack, Banger's,
Leslie Turner, Deborah Vasquez, Carlos Vasquez, Stephen
Reynolds, Hector Negrete, Charlene Price, Penny Burt, Allegra
Printing, Travis Bedard, Stephanie Nelson, Stepahnie
Hanna-Chambers, The New Works Theatre Community, Austin
Scenic Co-op and Zac Crofford, Deven Kolluri, Jules Singh and
600 Highwaymen.



FAT PIG made possible in part from a Q Rental Suidy Grant from The Creative Fund.



THEATRE en BLOC is a sponsored project of Austin Creative Alliance

austin creative alliance



This project is supported and funded in part by the City of Austin through the Economic Growth & Redevelopment Services Office/Cultural Arts Division, believing an investment in the Arts is an investment in Austin's future.

THEATRE en BLOC

PRESENTS

FAT PIG BY NEIL LABUTE

DIRECTED BY DEREK KOLLURI

SCENIC DESIGN.....PATRICK + HOLLY CROWLEY
LIGHTING DESIGN.....JENNY LAVERY
COSTUME DESIGN.....JENNY HANNA-CHAMBERS
SOUND DESIGN + ORIGINAL MUSIC.....BLAKE ADDYSON
STAGE MANAGER.....TYLER KING
STAGE CREW.....SAM ALLEN, BRIAN COHEN,
STEPANIE MONICA, SUSIE ODNEAL
GRAPHIC DESIGN.....DEREK KOLLURI

CAST

TOM.....RYAN HAMILTON
HELEN.....ZENA VAUGHN
CARTER.....CHARLES P. STITES
JEANNIE.....JENNY LAVERY

Produced through special arrangement with Broadway Play Publishing Inc. The script to this play may be purchased from B P P I at BroadwayPlayPubl.com

THEATRE en BLOC .ORG



TOM

RYAN HAMILTON

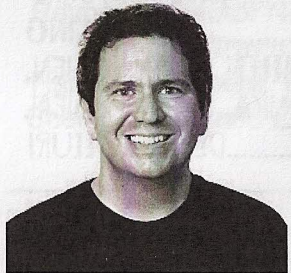
Ryan excited to be working with Theatre en Bloc again! A Kansas native, he has been acting for 15 years, 3 of which in Austin, a city he has come to love. Favorite theatre credits include Jesse Bandel/Teddy Ray Harrington in Just Outside Redemption with Theatre en Bloc, Clarence/Staf-ford in Rose Rage and Bianca in The Taming Of The Shrew with The Hidden Room, Brendan in Capital T's The Lieutenant Of Inishmore. Ryan also enjoys and does a fair share of film acting and can be seen in the upcoming season of NBC's Revolution. Also, he loves you very much :)



HELEN

ZENA VAUGHN

A theatre producer and manager by trade, Zena is proud to be sharing the stage for this production of Fat Pig. Zena's favorite roles have included Chicklet (Psycho Beach Party), Titania (A Midsummer's Night Dream) and LuLu (Cabaret). Zena has a Master's in Nonprofit Management from DePaul University in Chicago, and earned her acting training at Texas A&M University in Corpus Christi. Zena is also the Managing Director for the Penfold Theatre Company. Love and thanks to Chris.



CARTER

CHARLES P. STITES

Charles has appeared in dozens of Austin stage productions. He has been nominated for eight B. Iden Payne awards and won the 2002 award for Best Featured Actor in a Comedy. Charles is the founder of the Paladin Theatre Company. His next project will be a one-man stage adaptation of The Island of Dr. Moreau - written, directed, and performed by himself - which will premiere at FronteraFest in January/February 2014.



JEANNIE

JENNY LAVERY

A non-Texan, Jenny has been acting for 22 years throughout the northeast, in New York, and now Texas. Some of her favorite Austin roles are: Helena (A Midsummer Nights Dream), Lonnie (American Bear), and Charlotte (A Little Night Music). She has directed over 20 plays/musicals including Austin productions of Art Into the Woods, and Violet Crown: Dog's Town. Jenny holds a BFA from NYU and a Masters in Ed. from BTR. Her work has earned several awards & nominations. Jenny is Co-Director of Theatre en Bloc.

DEREK KOLLURI

Derek Kolluri is the Creator of Sustainable Theatre Project and Co-Director of Theatre en Bloc. He is developing new building systems for the theatre to make the arts more environmentally friendly and more economically viable. Derek attended Empria State University and The University of Arkansas and has directed, acted and designed for hundreds of productions academically and professionally for the past 16 years. His work has earned numerous award nominations in and outside of Austin.

BLAKE ADDYSON

Blake Addyson (Sound Design, Composer) is very excited to be working with Theater en Bloc for the fifth time after his work with them on American Bear, Just Outside Redemption, Violet Crown Dog's Town and Austin Is A Place. He has been working in Austin theatres for the last three years mostly as a stage manager and sound designer for such productions as Zeus In Therapy and most recently Salt and Pepper at ZACH, and is also production manager for Tongue and Groove Theatre. He would like to thank his friends for always supporting him and Gricelda for keeping him grounded and appreciating the little things.

JENNY HANNA-CHAMBERS

Jenny holds a BFA in Costume Design from Texas State University - San Marcos. She has worked with different groups designing and constructing including ACC, Imagine That Productions, Theatre en Bloc, and Zilker Productions. Previous works include: Hair, Anything Goes, A Funny Thing Happened on the Way to the Forum, Funny House of a Negro, American Bear, Just Outside Redemption, Beauty is the Best Priest, and Austin is a Place-You are Here. Thanks to her family and friends for their love and support.

PATRICK CROWLEY

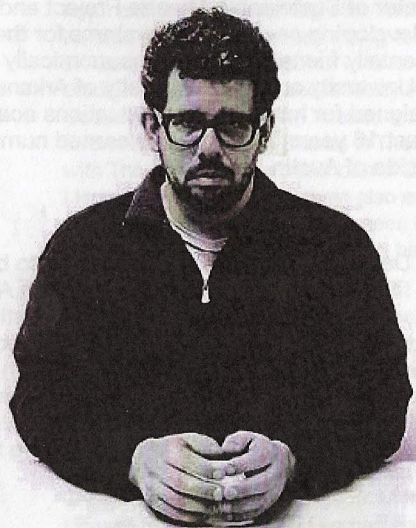
The hairier half of Dynamic Duo, Patrick prides himself a scenic designer, actor, director, carpenter and more. Patrick's work has been seen all over the country and locally for Austin Playhouse and Pollyanna Theatre. Patrick is happy to be working with Theatre en Bloc and would like to thank his daughter Zena.

HOLLY CROWLEY

The other, taller half of Dynamic Duo, Holly has worked regionally and nationally, as a designer, scene painter, actor and all around theatre artist. Holly and Patrick's work can have recently been seen on the stages of Austin Playhouse, Pollyanna Theatre. Holly is excited to be working with Theatre en Bloc and looks forward to future collaborations.

TYLER KING

Tyler has been working in Austin theatre since 2011 when he directed Look Back in Anger at The Off Center. Since that time he has worked with multiple companies around town including Doctuh Mistuh Productions (Reefer Madness), Theatre en Bloc (Austin is a Place (You Are Here), Just Outside Redemption) and Out of Context Productions (Somewhere in Utopia, Look Back in Anger). In December, Tyler will be directing a production of Arrabal's Picnic on the Battlefield, playing for a limited run at Salvage Vanguard Theater. Much thanks to Kristi, Michael and his family for their continual support.



NEIL LABUTE

Born March 19, 1963 in Detroit, Michigan, LaBute was raised in Spokane, Washington and studied Theater at Brigham Young University (BYU), where he joined the Church of Jesus Christ of Latter-day Saints. At BYU, he produced a number of plays that pushed the envelope of what was allowable at the straight-laced Mormon university, some of which were immediately shut down after their premier. LaBute also did graduate work at the University of Kansas, New York University, and the Royal Academy of London.

LaBute is a critically acclaimed playwright, filmmaker, and fiction writer. His controversial works include the plays *Bash: Latter-Day Plays*, *The Distance From Here*, *The Mercy Seat*, *Some Girl(s)*, *Autobahn*, *This Is How It Goes*, and *Reasons to be Pretty*; the films *In The Company Of Men*, *Your Friends And Neighbors*, *Nurse Betty*, and *Possession*; the play and film adaptation of *The Shape Of Things*; and the short-story collection *Seconds Of Pleasure*.

IN DEVELOPMENT

A Look Ahead at What's to Come from THEATRE en BLOC

VIOLET CROWN SALAMANDER'S DOWN

Last year's Violet Crown Dog's Town, A shadow Puppet Folk Musical took top honors at FronteraFest. This year, the same creative team will bring another musically scored shadow play all about Austin and the animals who share this great city with us. This Winter we bring you Violet Crown Salamander's Down, the story of Uri the Salamander's journey to find a home when his natural habitat, Barton Springs is threatened. Based on research about the unique Barton Springs Salamander, VCSO promises another beautifully imagined short piece made just for Austin. Look for it at FronteraFest this year.

UNITITLED CHARLES WHITMAN PLAY

This Fall Theatre en Bloc will travel to Lawrence, Kansas joining resident playwright Larry Mitchell, the boys of Rubber Repertory and the Pilot Balloon Residency to begin development on a new piece of theatre based on the tragic UT tower shooting. Since 1966, when Charles Whitman climbed the top of the Bell Tower on the UT campus, the threat of a mass shooting has increased in alarming ways. From Columbine to Newtown, these acts have shifted from uncommon to completely expected. We can all agree that these acts are horrible but no such consensus exists about what we can do to prevent them. In his parting letter, half typed, half written Whitman wrote "If my life insurance policy is valid please pay off my debts [...] donate the rest anonymously to a mental health foundation. Maybe research can prevent further tragedies of this type." Perhaps, this maniac was more self-aware than we are comfortable giving credit. Look for more information this Fall.



This Storyline Has Many Twists & Turns



The Austin Steam Train Association applauds this year's lineup of shows. When you want some more entertainment with additional twists and turns, step aboard the train and take a trip down memory lane. Plus, enjoy the many special event and theatrical trains throughout the year. Schedules, train details, directions to the depot and tickets available at the website.

Plus, buy tickets online and use code "THEATRE" to **save 10%** on the Hill Country Flyer or Bertram Flyers. Hop online, then hop aboard!

RESERVATIONS

512-477-8468 • www.AustinSteamTrain.org

A nonprofit volunteer organization.

Find us on Facebook 