

# ZACH

T H E A T R E

DAVE STEAKLEY, Producing Artistic Director  
and ELISBETH CHALLENGER, Managing Director  
present

## 33 Variations

Written by **MOISÉS KAUFMAN**

Music Written by **LUDWIG VAN BEETHOVEN**

Directed by **DAVE STEAKLEY**

Choreographer.....	JENNIFER YOUNG MAHLSTEDT*
Scenic Design.....	CLIFF SIMON
Lighting Design.....	MICHELLE HABECK
Costume Design .....	ALISON HERYER
Sound Design .....	CRAIG BROCK
Projection Design.....	COLIN LOWRY
Hair & Makeup Design.....	SERRET JENSEN
Properties Design.....	JUSTIN COX
Assistant to the Director/Dramaturg.....	JON PETERSON
Stage Manager.....	BRYAN BRADFORD*
Asst. Stage Manager.....	SARAH CHAPMAN

\*Member of Actors' Equity Association, the union of professional actors and stage managers in the United States.

January 23 - February 17, 2013

Topfer Theatre • Karen Kuykendall Stage

### Production Sponsors

Executive Producers: **Michelle Bourianoff and Juan Zalles**

Producers: **Kathleen and Harvey Guion**

### ACKNOWLEDGEMENTS

Originally produced on Broadway, 2009 by David Binder, Ruth Hendel, Barbara Whitman, Goldberg/Mills, Latitude Link, Arielle Tepper Madover, Bill Resnick, Eric Schnall, Jayne Baron Sherman, Willis/True Love Productions and Tectonic Theater Project (Greg Reiner, Executive Director; Dominick Balletta, General Manager; Jeffery LaHoste, Senior Producer). 33 VARIATIONS is presented by special arrangement with Dramatists Play Service, Inc., New York. ZACH Theatre operates under a Small Professional Theatre contract with **Actors' Equity Association**, the union of professional actors and stage managers in the United States; ZACH Theatre is a Constituent Member of **Theatre Communications Group** (TCG), the prestigious association of professional theatres nationwide; and an organizational member of the **National Alliance for Musical Theatre** (NAMT).

## Cast

# 33 Variations

(In Order of Appearance)

The Pianist.....	<b>ANTON NEL</b>
Katherine Brandt .....	<b>BETH BRODERICK*</b>
Clara Brandt.....	<b>CHRISTIN SAWYER DAVIS*</b>
Mike Clark.....	<b>LINCOLN THOMPSON*</b>
Anton Diabelli.....	<b>BRIAN COUGHLIN*</b>
Anton Schindler .....	<b>GREG BAGLIA*</b>
Dr. Gertrude Ladenburger.....	<b>BARBARA CHISHOLM</b>
Ludwig van Beethoven .....	<b>PETER REZNIKOFF*</b>

\*Member of Actors' Equity Association, the union of professional actors and stage managers in the United States.

**Time:**

1819, 1823 and The Present

**Places:**

New York, USA  
 Bonn, Germany  
 Vienna, Austria

---

There will be one twenty-minute intermission.

---

**Playwright's Note:**

*Although this play is based on a historical event, namely the birth of the "Diabelli Variations," I have chosen to explore this story from a fictional perspective. Thus, this play is not a reconstruction of a historic event; rather, it's a series of variations on a moment in a life.*

– **Moisés Kaufman**



The videotaping or other video or audio recording of this production and the taking of photographs, with or without flash, or by camera phone, is strictly prohibited. Please turn off all electronic devices – such as cell phones, pagers, etc. – and refrain from texting and/or tweeting during the performance.



# About the Company



**BETH BRODERICK\*** (*Katherine Brandt*) – makes her ZACH Theatre debut with this production. NEW YORK and OFF-BROADWAY: *Murder at the Rutherford House*, *Elizabeth Rex The Musical* and *Stage Door*. REGIONAL THEATRE: *Just Outside Redemption* with Theatre en Bloc (Austin), *Heads* with Blank Theatre (Los Angeles), *Bad Dates* with Chicago Northlight/Laguna Playhouse, *Zastrozzi* with Beverly Hills Playhouse, *Triples in Unison* at the Skylight Theatre Hollywood and *Carnal Knowledge* at the Pasadena Playhouse. FILM: *Bad Actress*, *Fly Away*, *Timber Falls*, *French Exit*, *Fools Rush In*, *Psycho Beach Party*, *Bonfire of the Vanities*, *Stealing Home*. TV SERIES REGULAR: *Sabrina the Teenage Witch*, *The Five Mrs. Buchannan's*, *Heart's Afire* and *Glory Days*. TV RECURRING ROLES: *Lost* and *The Bionic Woman*. TV SERIES GUEST STAR: *The Closer*, *CSI*, *Cold Case*, *Castle*, *Leverage* and *ER*. MOVIES OF THE WEEK: *Revenge of the Bridesmaids*, *Homeland Security*, *Ordinary Heroes*, *Are You Lonesome Tonight*, *Maternal Instincts*, *Justice in a Small Town* and *Into the Deep Woods*. OTHER CREDITS: Beth is also a script writer, voice-over artist, featured contributor to the *Huffington Post* and a founder of MOMENTUM, one of the country's first organizations to help people with AIDS.



**ANTON NEL** (*The Pianist*) – makes his ZACH Theatre debut with this production. EARLY YEARS: Anton debuted at age 12 with Beethoven's *C Major Concerto* in Johannesburg after two years of study. He became the winner of all major South African competitions, and a well-known radio and television personality. His European debut was in France in 1982. CAREER: Winner of 1st Prize in the 1987 Naumburg International Piano Competition. Anton continues to appear worldwide as a soloist, recitalist and chamber musician. He has been a special guest performer in orchestras including Chicago, Cleveland, San Francisco and London, among many others. His recitals have played Carnegie Hall; Wigmore Hall, London; Concertgebouw, Amsterdam; and Suntory Hall, Tokyo. Anton has performed chamber music with leading instrumentalists and singers and in summer festivals that include Aspen (artist-faculty), Seattle, Vancouver, Ainay le Vielle, Cartagena, Stellenbosch and Katsuyama. TEACHING: Joe R. and Teresa Lozano Long Endowed Chair at the University of Texas at Austin; Head of Division of Keyboard Studies. Anton also teaches master classes worldwide. RECORDINGS: 15 solo, concerto and chamber music CDs. MORE INFORMATION: [antonnell.com](http://antonnell.com)

\*Member of Actors' Equity Association, the union of professional actors and stage managers in the United States.



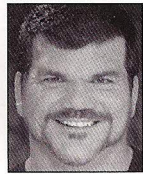
Actors' Equity Association, founded in 1913, represents more than 49,000 Actors and Stage Managers in the U.S. Equity negotiates wages and working conditions, providing a wide range of benefits, including health and pension plans. Equity seeks to foster the art of live theatre as an essential component of our society. [www.actorsequity.org](http://www.actorsequity.org)



## About the Company



**BARBARA CHISHOLM** (*Dr. Gertrude Ladenburger*) – AT ZACH THEATRE: *Dividing the Estate, Red Hot Patriot: The Kick-Ass Wit of Molly Ivins, Our Town, Shooting Star, The Clean House, Present Laughter, 365 Plays/365 Days, Keepin' It Weird, Blown Sideways Through Life, House Arrest, The Pavilion, Misery, Abundance, The Last Night of Ballyhoo, Ruthless! The Musical* and *The Sisters Rosensweig*, among others. REGIONAL THEATRE: *When Something Wonderful Ends*, Red Then Productions; *Nesteggs For Armageddon*, Kennedy Center, D.C.; *The Winter's Tale* and *Hamlet*, Austin Shakespeare Festival; *Twelfth Night*, Sneak Up! Productions; *The Chronicles of Badass Women*, Nantasket UT; *The Women*, San Diego Repertory Theatre; *David's Redhaired Death and Silence, Cunning, and Exile*, Frontera at Hyde Park Theatre; *Come Back To The Five and Dime Jimmy Dean, Jimmy Dean*, Live Oak Theatre; *Goodnight Desdemona, Good Morning Juliet*, Capitol City Playhouse. FILM: *Holy Hell, Brotherly Love, The Aviatrix, Fast Food Nation, Boyhood*, and *Broke Sky*. TELEVISION: *Friday Night Lights*. OTHER: Voted "Best Actor" in *The Austin Chronicle's Readers' Poll* (2008 & 2011). Multiple ACOT and Austin Critics' Table Awards for both comedy and drama. Producing Director of Red Then Productions.



**BRIAN COUGHLIN\*** (*Anton Diabelli*) – AT ZACH THEATRE: *White Christmas* (Ezekiel Foster/Santa Claus), *Hairspray* (Edna Turnblad - B. Iden Payne Award), *Present Laughter* (Morris), *Omnium-Gatherum* (Jeff), *Cabaret* (Ernst), *Rockin' Christmas Party* (Elvis). REGIONAL CREDITS: *Chess, Born Yesterday, The Trip to Bountiful, The Mousetrap, Age of Arousal, Dancing at Lughnasa, Amadeus, A Funny Thing Happened on the Way to the Forum, The Mystery of Edwin Drood, A Streetcar Named Desire, Love's Labours' Lost, Lend Me a Tenor, Evita, The Crucible, Three Sisters, Into the Woods, The Fantasticks, A Man for All Seasons, The Best Little Whorehouse in Texas, The Trip To Bountiful*. Guest Artist appearances in *The Man Who Came to Dinner* at Southwestern University and *Parade* at St. Edward's University. FILM: *The Flintstones in Viva Rock Vegas, The Medicine Show* and *Dream Lover*. OTHER: Brian is a company member at Austin Playhouse and received his M.F.A. in Acting from the University of Connecticut and a B.A. in Theatre from Southwestern University.



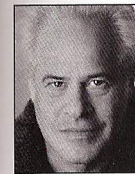
**CHRISTIN SAWYER DAVIS\*** (*Clara Brandt*) – joins ZACH Theatre for the first time with this production. NEWYORKTHEATRE: *Wonder of the World* with The Children, *Farmtrucks* at NYC Fringe, as well readings and workshops with Page 73 and At Hand Productions. REGIONAL THEATRE: *A Christmas Carol* at American Conservatory Theater, *Reasons to be Pretty* at TheatreSquared, *Twelfth Night* at Bristol Riverside Theater and *The Fabulous Adventures of Captain Queer* at New Conservatory Theater Center. FILM: *The Private Lives of Pippa Lee*; last fall, filmed with Terrence Malick on his new feature. ADDITIONAL CREDITS: M.F.A. from American Conservatory Theater.

\*Member of Actors' Equity Association, the union of professional actors and stage managers in the United States.

## About the Company



**GREG BAGLIA\*** (*Anton Schindler*) – AT ZACH THEATRE: *August: Osage County*. REGIONAL THEATRE: *Private Lives* (Elyot), *Why Marry?* (Ernest), *Fortinbras* (Fortinbras), *The Pavilion* (Peter), *Miss Golden Dreams* (Joe Dimaggio), *Hunger* (Adam), *The Ecstasy of Saint Theresa* (Conley) and *Cabaret* (Cliff). NEW YORK, OFF- and OFF-OFF BROADWAY: The title role in *An Evening with Jesse James, A Wedding Album* (Emmit), *Comedy of Errors* (Dromio) and *Much Ado About Nothing* (Claudio) with Riverside Shakespeare Company, *Detective Story* (Joe). TELEVISION: *The Secret Lives of Wives, Criminal Minds, Dave Chappelle's Show, All My Children, One Life to Live, As the World Turns, Guiding Light*. FILM: *The Last Mark, Uptown Girls, Abuelo and Dozers*. OTHER CREDITS: Greg also provides voice effects for many feature films and TV programs including *Admission, Lowlife, True Grit, Secretariat* and *Yogi Bear*. For DC Universe, he is the voice of "The Flash."



**PETER REZNIKOFF\*** (*Ludwig van Beethoven*) – joins ZACH Theatre for the first time with this production. He will soon be seen as "Paul" in Robert Orlando's film, *A Politic Bribe*. BROADWAY: *Irena's Vow*. OFF-BROADWAY: *The Maltinsky Chronicles, The Lost Girls, Ghosts, Irena's Vow, New York Shakespeare Festival, Richard III, Henry VI, Romeo and Hamlet, Far and Wide, All The Rage, Harry The Hunk On His Way Out, Ensemble Studio Theatre One Act Festival, Three Men On A Base, The Lost Box of Utopia, The Caterers, Compulsion, The Truth, Rhinestone, Venus Observed, The Cold Wind and the Warm, Pavilion, Reflected Glory Troublemaker*. REGIONAL THEATRE: "Lyman" in *The Ride Down Mount Morgan, Arturo Ui*. FILM/TV: *Sheer, A Politic Bribe, Lost Girls Daydreaming, Coninua, Trojans, What She's Having, Dining Table, Marathon Man, The Quinns, Guiding Light* and *All My Children*.



**LINCOLN THOMPSON\*** (*Mike Clark*) – joins ZACH Theatre for the first time with this production. REGIONAL THEATRE: *Othello, A Midsummer Night's Dream, The Catch, A Christmas Carol* and *Dracula* at Denver Center; *The Foreigner* at Watertower Theatre. OFF-BROADWAY: *The Rotting of Tycho de Brahe* at Ensemble Studio Theatre. OFF-OFF-BROADWAY: *The Violet Hour* at The Workshop Theatre. OTHER THEATRE: *The Winter's Tale, Macbeth*, and *You Can't Take It With You* at the Chautauqua Theatre Company; *Love's Labour's Lost* and *Othello* at Dallas Shakespeare Festival; *As You Like It, Ah! Wilderness, Nicholas Nickleby, Hair, Three Sisters, 'Tis Pity She's a Whore* and *Man and Superman* at the National Theatre Conservatory. ADDITIONAL CREDITS: B.F.A. from Baylor University, M.F.A. from National Theatre Conservatory. Visiting Assistant Professor at Baylor University.

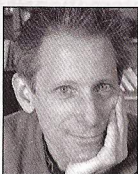
\*Member of Actors' Equity Association, the union of professional actors and stage managers in the United States.



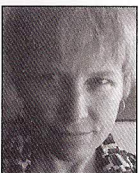
## About the Artistic Staff



**JENNIFER YOUNG MAHLSTEDT\*** (Choreographer) – AT ZACH THEATRE: *Ragtime*, *Xanadu*, *Smokey Joe's Cafe* and *Rockin' Christmas Party*. REGIONAL THEATRE: *Dames at Sea*. Jennifer has performed regularly for Theatre Under the Stars, Austin Playhouse, the former Austin Musical Theatre, Zilker Theatre Productions and San Francisco's Marines Memorial Theatre; favorites roles include "Lola" in *Damn Yankees*, "Bianca" in *Kiss Me Kate*, "Tiger Lily" in *Peter Pan* and "Ruby" in *Dames at Sea*. AWARDS: Austin Critics' Table and B. Iden Payne Awards for "Best Supporting Actress" and "Choreography". OTHER CREDITS: Jennifer is currently the Pre-Professional School Coordinator for ZACH Theatre.



**CLIFF SIMON** (Scenic Design) – has designed ZACH Theatre productions of *White Christmas*, *Dividing the Estate*, *Hair*, *The Grapes of Wrath*, *Present Laughter* (B. Iden Payne Award), *Seussical The Musical* and *House Arrest*. He also designed in New York City at the Truck and Warehouse Theater, Lamb's Club, Playwright's Horizons and T. Schreiber Studios; in New Jersey at the George Street Playhouse; at the Cleveland Play House; in Austin for Tapestry Dance, Rude Mechs and the Zilker Hillside Theatre; in Florida at the Riverside Theatre and Maltz-Jupiter; in Philadelphia at the Walnut Street; in Montana at Bigfork; and in Birmingham at Birmingham Children's Theatre and at UAB, where he teaches Scene Design. He has also designed edibly painted cakes for the likes of Diana Ross and Madonna. [www.cliffcakes.com](http://www.cliffcakes.com).



**MICHELLE HABECK** (Lighting Design) – AT ZACH THEATRE: *Xanadu*, *Dividing The Estate* and the upcoming *Mad Beat Hip & Gone*. BROADWAY: Slide Artist for *Thoroughly Modern Millie*; Associate Lighting Designer for *The Boy from Oz* and *King Hedley II*; Assistant Lighting Designer for *Movin' Out*. OPERA: Associate Lighting Designer for Julie Taymor's *Grendel*. OFF-BROADWAY: *Fifty Words*. REGIONAL: *An Enemy of the People*, *A Skull in Connemara*, *Let There Be Love*, *Things of Dry Hours* and *Elmina's Kitchen* for CenterStage; *WAS* (dir. Tina Landau) and *Dangerous Beauty* (dir. Sheryl Kaller) at AMTP; *A Raisin in the Sun* and *Gem of the Ocean* at The Guthrie; *Love Song*, *The Chosen* and *Ten Percent of Molly Snyder* for Steppenwolf Theatre Company. Michelle also designs for The Goodman, Alliance, Penumbra, Writer's, Lookingglass among others. AWARDS: NEA/TCG for Design, The University of Texas Faculty Fine Arts Award.



**ALISON HERYER** (Costume Design) - is a costume designer for theatre, film and print. AT ZACH THEATRE: *Rent* and *Doubt*. NEW YORK: *The Bluest Eye* at The New Victory Theatre. REGIONAL THEATRE: *The Fall to Earth*, *A Lesson Before Dying*, *Orange Flower Water*, *Things Being What They Are* and *World Set Free* at Steppenwolf Theatre; *Pippin* and *The Whipping Man* at Kansas City Repertory Theatre; *Jackie and Me* at Indiana Repertory Theatre; *Six Characters in Search of an Author* with The Hypocrites; *Seagull* with Redmoon Theatre, *The*

\*Member of Actors' Equity Association, the union of professional actors and stage managers in the United States.

## About the Artistic Staff

*Difficulty of Crossing a Field*, *Trojan Women* and *The Idiot* at The University of Texas at Austin. FILM: *Dance with the One*, *Fatakra*. AWARDS: Austin Critics Table Award for Costume Design; Michael Philippi Emerging Designer Award.



**COLIN LOWRY** (Projection, Design) – owns and operates Line Dash, LLC – [linedash.com](http://linedash.com). Line Dash is a small media production company focused on media design & deployment for live events, short subjects, animation, advertising and original creative. Favorite design credits include *Ragtime*, *The Book of Grace*, *Rent*, *The Laramie Project* and *Jouët* (ZACH Theatre), *My Favorite Year* (Zilker Theater Productions), *The Geometry of Proximity*, *Flush* and *Everything Between* (Ariel Dance Theatre), *Requiem for Tesla* and *How Late It Was How Late* - 2003-2004 Austin Critics' Table Award for "Video Design" (Rude Mechs).



**CRAIG BROCK** (Sound Design) – is ZACH Theatre's Resident Sound Designer, in addition to working as a recording engineer and music producer since 1989. AT ZACH THEATRE: *Tru*, *White Christmas*, *Ragtime*, *Xanadu*, *Dividing The Estate*, *The Laramie Project*, *The Laramie Project: 10 Years Later*, *Next to Normal*, *Rent*, *Metamorphoses*, *The Drowsy Chaperone*, *Becky's New Car*, *Our Town*, *Flaming Idiots*, *Spelling Bee*, *Love*, *Janis*, *The Grapes of Wrath*, *Let Me Down Easy*, *Shooting Star*, *Caroline*, or *Change*, *The Clean House*, *Altar Boyz*, *Porgy and Bess*, *Speeding Motorcycle*, *High School Musical*, *Jesus Christ Superstar/Jesu Cristo Superestrella*, *Take Me Out*, *Rocky Horror*, *I Am My Own Wife*, *Urinetown*, *Hank Williams: Lost Highway*, *Rockin' Christmas Party* and *The Santaland Diaries*. REGIONAL THEATRE: *Evil Dead*, *City of Angels*, *Dream*, *Annie*, *The Music Man* and *Starlight Express*. Album credits include: El Tri, Mana, Luis Miguel, Michael Jackson, Ray Charles, Barbra Streisand, Guns & Roses, David Crosby, Stephen Stills.



**SERRET JENSEN** (Hair & Makeup Design) – AT ZACH THEATRE: *Spring Awakening*. Serret is the owner of Wig Witch Studios and currently serves as the resident wig, makeup and special effects designer for Divergence Voal Theater in Houston and BookPeople's Literacy Camps for Children in Austin. Since 1995, Serret has created wig and makeup work for numerous productions with the Alley Theatre, Houston Grand Opera, Austin Lyric Opera, Houston Ballet, Theater Under the Stars and the Society of Performing Arts, as well as several national touring shows.



**JUSTIN COX** (Properties Design) – AT ZACH THEATRE: Properties Design for *Tru*; Props Artisan for *White Christmas*, *Ragtime*, *Dividing the Estate*, *Hairspray* and *The Santaland Diaries*. OTHER THEATRE: *Pride and Prejudice*, *Twelfth Knight*, *Arcadia*, *Hamlet*, *Love's Labour's Lost* and *Man and Superman* at Austin Shakespeare; *Invisible Inc.* at Hidden Room Theatre; *Twelfth Labor* at Tutto Theatre; *Leonardo and His Flying Machine* with Puppetrunk Theatre (Puppet Design Team).

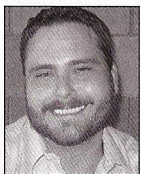


## About the Artistic Staff

FILM: *The Legend of Hell's Gate* with 4Go West Productions (Set Dresser). TV: *Impaled!* with Oxford Scientific Films for Discovery Channel US and Five UK (Special Effects Prop Design & Set Dress). OTHER CREDITS: Production team member at Looking for Shakespeare, an at-risk youth camp in New York.



**JIM LYDEN** (Technical Director) – AT ZACH THEATRE: *Tru*, *Ragtime*, *Santaland Diaries* and *White Christmas*. Jim has designed sets, lights, or sound for more than 100 productions. He has worked as Technical Director for the California Shakespeare Theatre and as a Set Designer and Technical Director for the Utah Festival Opera. He was an associate professor for the College of Santa Fe and The University of Colorado. He has worked with the Central City (Colo.) Opera and the Colorado and Illinois Shakespeare Festivals. He lives in Austin with his wife, Helene Clehr, his daughter Grace and two annoying dogs.



**PAUL FLINT** (Director of Production) – joined ZACH Theatre in 2008. He earned his B.F.A. from Shorter College and M.F.A. from Southern Illinois University, Carbondale, with a focus on Technical Direction, Scenic Design and Arts Management. His theatre credits include the Alliance Theatre in Atlanta, Ga, Glimmerglass Opera in Cooperstown, NY, Vitalist Theatre Company in Chicago, Ill., and he is a founding member of Seaside Repertory Theatre in Seaside, Fla. Paul is the author of *Managing the Creative Mind: A Technical Director's Process*.



**BLAIR HURRY** (Costume Shop Manager) – grew up in Austin and studied Costume Design & Technology at the University of Texas. Her costume design works at ZACH Theatre include *The Santaland Diaries*, *Red Hot Patriot: The Kick-Ass Wit of Molly Ivins*, *Metamorphoses*, *Shooting Star* (2009-2010 Season), *Farm to Market*, *Call It Courage*, *Brother's Boyfriends* and *other Criminals*, *Give a Mouse a Cookie*, *Sideways Stories* (ZACH's Performing Arts School). Other local designs include *Vampyress* (Vortex Theatre), *Parade: A Musical* (St. Edward's University), *The Famous Rio Grande*, *The Trojan Women* and *Cabaret* (University of Texas). Prior to ZACH, she built costumes for the Williamstown Theatre Festival, The Ohio Light Opera Company and STAGES: St. Louis. She also worked as Head of Wardrobe and Make-up for the national tour of Playhouse Disney's *The Doodlebops LIVE!* and the 2008 national tour of The Moscow Ballet's *The Great Russian Nutcracker*. She is currently an active member of the local 205 IATSE union.



**VICTORIA S. COADY\*** (Production Stage Manager) – joined ZACH Theatre in July 2012. REGIONAL THEATRE: *The Rocky Horror Show* at American Repertory Theatre's OBERON, *Xanadu*, *The Drowsy Chaperone*, *Striking 12*, *Body Awareness*, *Adding Machine: A Musical*; [title of show] at SpeakEasy Stage Company; Producer for toUch Performance Art's *AcousticaElectronica* in Boston and

\*Member of Actors' Equity Association, the union of professional actors and stage managers in the United States.

## About the Artistic Staff

New York. OFF-BROADWAY: *The Merchant Of Venice* in New York and the Royal Shakespeare Company, UK with Theatre for a New Audience, *The Jew Of Malta*, *Sore Throats* and *All's Well That Ends Well* with Theatre for a New Audience NYC. EVENT MANAGEMENT: Harvard Arts Medal 2012 presented to Tommy Lee Jones, Lady Gaga's Born This Way Foundation launch event at Harvard University.



**BRYAN BRADFORD\*** (Stage Manager) – is thrilled to return to ZACH Theatre for this production. AT ZACH THEATRE: *Take Me Out*, *Aida*, *Crowns* and *House Arrest*. BROADWAY: *Newsies*, *Rock of Ages*, *The Importance of Being Earnest*, *Mrs. Warren's Profession*, *Chaplin* (pre-Broadway workshop), *Kinky Boots* (Chicago pre-Broadway engagement). OFF-BROADWAY: *Lost in the Stars* (Encores!), *Be a Good Little Widow* (Ars Nova), *Death Takes a Holiday* (Roundabout).



**SARAH CHAPMAN** (Asst. Stage Manager) – A native Texan, Sarah returns to ZACH Theatre after serving as Assistant Stage Manager for *Ragtime*. Recent credits include: *The 39 Steps*, *Avenue Q*, *Annie*, *The 25th Annual Putnum County Spelling Bee* (Theatre Aspen); *The Lion in Winter*, *Blithe Spirit* (The Classic Theatre, San Antonio); *How I Learned to Drive* (Boston Center for American Performance); and *Gilbert is Dead* (Shiningman Theatre Company, London UK). Sarah holds a B.F.A. in Stage Management from Boston University and currently calls Dallas home.



**MOISÉS KAUFMAN\*** (Playwright) – is a Tony and Emmy nominated director and playwright. His play *33 Variations*, which starred Jane Fonda, was nominated for five Tony awards (including one for Ms. Fonda). Previous to that, Mr. Kaufman directed the Pulitzer and Tony award-winning play *I Am My Own Wife*, earning him an Obie Award for his direction as well as Tony, Drama Desk, Outer Critics Circle, and Lucille Lortel nominations. His plays *Gross Indecency: The Three Trials of Oscar Wilde*, *The Laramie Project* and *The Laramie Project: Ten Years Later* have been among the most performed plays in America over the last decade. Mr. Kaufman also directed the film adaptation of *The Laramie Project* for HBO, which was the opening night selection at the 2002 Sundance Film Festival and won the National Board of Review Award, the Humanitas Prize and a Special Mention for "Best First Film" at the Berlin Film Festival. The film also earned Mr. Kaufman two Emmy Award nominations for "Best Director" and "Best Writer." He is the Artistic Director of Tectonic Theater Project and a Guggenheim Fellow in Playwriting. Other credits include *The Heiress* (Walter Keer Theatre), *Bengal Tiger at the Baghdad Zoo* (Mark Taper Forum), *Macbeth* with Liev Schreiber (Public Theater), *This Is How It Goes* (Donmar Warehouse), *One Arm* by Tennessee Williams (Steppenwolf Theater Company) *Master Class* with Rita Moreno (Berkeley Repertory Theater) and *Lady Windemere's Fan* (Williamstown Theater Festival).

\*Member of Actors' Equity Association, the union of professional actors and stage managers in the United States.