

DAVE STEAKLEY, Producing Artistic Director  
and ELISBETH CHALLENGER, Managing Director

Co-Produced with Daniel Chlewich and Todd Gershwin of One Night Productions,  
present

# ONE NIGHT WITH JANIS JOPLIN

In association with the Estate of Janis Joplin and Jeffrey Jampol of JAM, Inc.

Created, Written & Directed by **RANDY JOHNSON**

Musical Direction by **ALLEN ROBERTSON**

ZACH Theatre's Production is Co-Produced with **SAN JOSE REPERTORY THEATRE**  
Rick Lombardo, Artistic Director      Nick Nichols, Managing Director

Scenic Design.....**CLIFF SIMON**  
Lighting Design.....**MATTHEW WEBB**  
Costume Design.....**SUSAN BRANCH TOWNE**  
Projection Design.....**COLIN LOWRY**  
Sound Design.....**CRAIG BROCK**  
Properties Design.....**SCOTT GROH**  
Hair & Makeup Design.....**WILLA KAYE WARREN**  
Assistant Director.....**TYLER RHODES**  
Stage Manager.....**CATHERINE ANNE TUCKER\***  
Asst. Stage Manager.....**JESSIE DOUGLAS\***

\*Member of Actors' Equity Association, the union of professional actors and stage managers in the United States.

July 10 - August 18, 2013 • Topfer Theatre • Karen Kuykendall Stage

PRESENTING SPONSOR:  **BROADWAY BANK**  
*We're here for good.*

PRODUCER'S CIRCLE SPONSORS: Carolynn Bartlett • Joan and Jeff Lava

## ACKNOWLEDGEMENTS

Co-Produced in 2012 by **Cleveland Play House**  
Michael Bloom, Artistic Director      Kevin Moore, Managing Director

Co-Produced in 2012 by **Arena Stage**  
Molly Smith, Artistic Director      Edgar Dobie, Executive Director

The 2011 World Premiere of ONE NIGHT WITH JANIS JOPLIN was produced by and performed at  
**Portland Center Stage**, Portland, OR      Chris Coleman, Artistic Director

ZACH Theatre operates under a Small Professional Theatre contract with Actors' Equity Association, the union of professional actors and stage managers in the United States; ZACH Theatre is a Constituent Member of Theatre Communications Group (TCG), the prestigious association of professional theatres nationwide; and an organizational member of the National Alliance for Musical Theatre (NAMT).

# Cast

## ONE NIGHT WITH JANIS JOPLIN

Janis Joplin.....	KACEE CLANTON*
The Blues Singer.....	TIFFANY MANN*
Lead Joplainaire .....	TRICKY JONES
Joplainaire.....	FELICIA DINWIDDIE
Joplainaire.....	CARI HUTSON*

\*Member of Actors' Equity Association, the union of professional actors and stage managers in the United States.

### MUSICIANS:

Musical Director/Keyboards .....	Allen Robertson
Guitar 1 .....	Hunter St. Marie
Guitar 2.....	Paul Koudouris
Bass.....	Will Krause
Drums .....	Harrell Williams
Tenor Sax .....	Tony Bray
Trumpet 1.....	Rick White
Trumpet 2.....	Shane Walden

There will be one twenty-minute intermission.

Visit ZACH's Bar! Drinks with lids are welcome inside the theatre.

**Janis Joplin shares the stage with "The Blues Singer,"  
who represents the artists that influenced her, including:**

**BESSIE SMITH** (1894-1937) – Earned the title of "Empress of the Blues" by virtue of her forceful vocal delivery and command of the genre. She was the highest-paid Black performer of her day and arguably reached a level of success greater than that of any African-American entertainer before her.

**ETTA JAMES** (1938-2012) – The blues, soul, jazz, R&B and rock vocalist who forged a five-decade career with an alternately powerful and poignant voice gracing more than a dozen hit singles and earning her four GRAMMY® Awards and a prominent place in the Rock and Roll Hall of Fame.

**NINA SIMONE** (1933-2003) – Was one of the most gifted vocalists of her generation, and also one of the most eclectic. The American songwriter, arranger and painter sang a mix of jazz, blues and folk music in the 1950s and '60s, and as a civil rights activist, wrote songs promoting the movement.

# Musical Numbers

## Act I

- Combination of the Two/Tell Mama**..... Janis Joplin, Joplinaires & Blues Singer  
 "Tell Mama" published as "Tell Daddy," written by Terrell, Clarence Carter & Marcus Daniel; all rights administered by EMI Music Publishing, LLC. "Combination of the Two," written by Sam Andrew; all rights reserved, used by permission.
- My Baby**..... Janis Joplin  
 Written by Jerry Ragovoy & Mort Shuman, 1966 (renewed) Unichappell Music, Inc. (BMI) and Mort Shuman Songs (BMI); all rights on behalf of Mort Shuman Songs administered by Warner-Tamerlane Publishing Corp.; all rights reserved; used by permission.
- Maybe**..... Janis Joplin, Joplinaires & Blues Singer  
 Written by Richard Barrett; all rights administered by EMI Music Publishing LLC; all rights reserved; used by permission.
- Summertime**..... Blues Singer & Janis Joplin  
 Written by George Gershwin, DuBose Heyward, Dorothy Heyward & Ira Gershwin; 1935 (renewed) George Gershwin Music (ASCAP), DuBose and Dorothy Heyward Memorial Fund Publishing (ASCAP) & Ira Gershwin Musical (ASCAP); all rights administered by Wb Music Corp.; all rights reserved, used by permission.
- Bye Bye Baby**..... Orchestra  
 Written by Powell St. John; published by Mainspring Watchworks Music (ASCAP); under license from The Bicycle Music Company.
- Turtle Blues**..... Janis Joplin  
 Written by Janis Joplin; published by Strong Arm Music (ASCAP); all rights reserved, used by permission.
- Down on Me**..... Blues Singer & Janis Joplin  
 Written by Janis Joplin; published by Strong Arm Music (ASCAP); all rights reserved, used by permission.
- Piece of My Heart**..... Janis Joplin & Joplinaires  
 Written by Bert Berns & Jerry Ragovoy; 1967 Sony/ATV Music Publishing LLC, Sloopy II Music, Warner-Tamerlane; all rights on behalf of Sony/ATV Music Publishing LLC administered by Sony/ATV Music Publishing LLC, 8 Music Square West, Nashville TN 37203; all rights reserved, used by permission.
- Today I Sing the Blues**..... Blues Singer  
 Written by Curtis Lewis; published by Bess Music Company; all rights reserved, used by permission.
- Nobody Knows When You're Down and Out**..... Blues Singer  
 Written by James Cox; published by Universal Music Publishing Group; all rights reserved, used by permission.
- A Woman Left Lonely**..... Janis Joplin  
 Composed by Dewey Lindon Oldham & Dan Penn; 1971 Embassy Music Corp. (BMI) & Dan Penn Music (BMI); all rights reserved, used by permission.
- Spirit in the Dark**..... Blues Singer, Janis Joplin & Joplinaires  
 Written by Aretha Franklin; published by Springtime Music, Inc.; all rights reserved, used by permission.



The videotaping or other video or audio recording of this production and the taking of photographs, with or without flash, or by camera phone, is strictly prohibited. Please turn off all electronic devices – such as cell phones, pagers, etc. – and refrain from texting and/or tweeting during the performance.

# Musical Numbers

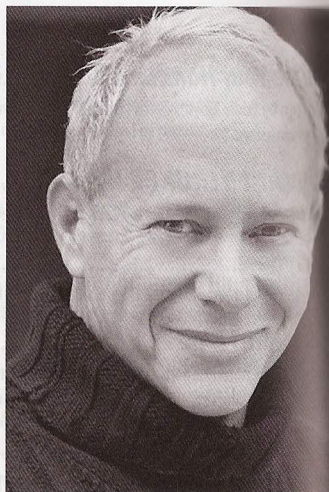
## Act II

- Raise Your Hand**..... Orchestra  
 Written by Eddie Floyd, Alvertis Isbell & Stephen Cropper; published by Universal Music Publishing Group; all rights reserved, used by permission.
- Try (Just a Little Bit Harder)**..... Janis Joplin  
 Written by Jerry Ragovoy & Chip Taylor; 1968 (renewed) Unichappell Music, Inc. (BMI); all rights reserved, used by permission.
- Maybe**..... Janis Joplin  
 Written by Richard Barrett; all rights administered by EMI Music Publishing LLC; all rights reserved, used by permission.
- Little Girl Blue**..... Blues Singer & Janis Joplin  
 Music by Richard Rodgers, Lyrics by Lorenz Hart; this selection is used by special arrangement with Rodgers & Hammerstein, an Imagem Company, www.rnh.com; all rights reserved, used by permission.
- Cry Baby**..... Janis Joplin  
 Written by Bert Berns & Norman Meade; 1963 Sony/ATV Music Publishing LLC, Sloopy II Music, Warner-Tamerlane; all rights on behalf of Sony/ATV Music Publishing LLC administered by Sony/ATV Music Publishing LLC, 8 Music Square West, Nashville TN 37203; all rights reserved, used by permission.
- Kozmic Blues**..... Orchestra  
 Written by Janis Joplin & Gabriel Mekler; published by Strong Arm Music (ASCAP); all rights reserved, used by permission.
- I Shall Be Released**..... Blues Singer, Janis Joplin & Joplinaires  
 Written by Bob Dylan; published by Dwarf Music; all rights reserved, used by permission.
- Me & Bobby McGee**..... Janis Joplin  
 Written by Fred Foster & Kris Kristofferson; published by EMI-Blackwood Music Inc. for Combine Music Corp.; all rights reserved, used by permission.
- I'm Gonna Rock My Way to Heaven**..... Janis Joplin  
 Words & Music by Jerry Ragovoy & Jenny Dean; published by The Tune Room, Inc.; all rights reserved, used by permission.
- Ball and Chain**..... Janis Joplin  
 Written by Willie Mae "Big Mama" Thornton; Bro 'N Sis Music, Inc.; all rights reserved, used by permission.
- Kozmic Blues (reprise)**..... Janis Joplin
- Stay with Me**..... Janis Joplin, Blues Singer & Joplinaires  
 Words & Music by George David Weiss & Jerry Ragovoy, 1966 published by Warner Chappell Music, renewed 1994 and assigned to Abilene Music LCC, c/o Larry Spier Music LCC, New York, NY; international copyright secured; all rights reserved including public performance, used by permission.
- I'm Gonna Rock My Way to Heaven (reprise)**..... Janis Joplin, Blues Singer & Joplinaires
- Piece of My Heart (reprise)**..... Orchestra
- Mercedes Benz**..... Janis Joplin  
 Written by Janis Joplin, Michael McClure & Robert Neuwirth; published by Strong Arm Music (ASCAP); all rights reserved, used by permission.

## Director's Notes

In these days where fame is instant and true musicianship rare, the word "artist" is an often-misused statement. As we are held hostage to a manufactured pop culture on a daily basis, I feel we must constantly revisit our history and explore the authentic forces that have shaped the landscape of our lives. One of those authentic forces is Janis Joplin.

There never has been, and never will be, another Janis Joplin. Her fame was earned – her following grew as she grew – as people were drawn to her and she was drawn to them. Janis Joplin was a true artist without contrivance or artifice. She was an extraordinary woman. People like to say "ahead of her time." I happen to believe she was right on time.



Randy Johnson

After immersing myself in the culture of Janis Joplin with Michael Joplin, Laura Joplin and Janis herself, the one prevailing message that kept coming back to me was the commonality of the paths and influences that guide and shape all of us and our spirit every day. I am constantly astonished and inspired by the depth of the wisdom she imparted in her music, her interviews, her writing and her art. All of us are influenced and shaped by artists, poets, musicians, thinkers and ordinary people. That's what creates new thought every day. Janis provoked a lot of thought by simply being herself.

At 3 a.m., one week after I had spent time with the Joplin family, I knew that this play would simply be *One Night with Janis Joplin*. It's a night where Janis (one more time) could share her music, truths, influences, art, philosophy and spirit. Janis lives on as most great artists eventually do: forever in the conscious collective. This isn't just Janis' story – it's all of our stories in one way or another. We all touch and inform each other as we travel this life. I trust that you, the audience, will take away with you a piece of Janis' heart.

**The world is a better place because she was here for a moment.**

– **Randy Johnson**

Playwright and Director of *One Night with Janis Joplin*

VISIT ZACH'S NEW FULL BAR! OPEN  
90 MIN'S. PRE-SHOW, AT INTERMISSION  
AND UPSTAIRS 1 HOUR POST-SHOW

## About the Company



**KACEE CLANTON\*** (*Janis Joplin*) – joins ZACH Theatre for the first time with this production. REGIONAL THEATRE: *Love, Janis* at San Diego Repertory Theatre and Kansas City Repertory Theatre. FILM/Soundtrack: *The Tooth Fairy* and *Kinsey*. FILM: *Mobsters*. TELEVISION/Soundtrack: *Brothers and Sisters*, *Fox Sports*, *Cribs*, *Open House New York*, *18 to Life*, *The Guiding Light*, *Star Search* and *Thirty Something*. TELEVISION/Appearance: *The Tonight Show*, *Regis & Kelly* and *Parkinson* (UK). OTHER THEATRE: *Your Town Follies* at El Portal Theatre, *Love, Janis* at Downstairs Cabaret Theatre, *Repatee '07* at Kansas City Repertory Theatre and *Bandage: The Rock Opera* at House of Blues. ADDITIONAL CREDITS: Toured as a vocalist with Big Brother & the Holding Company, Joe Cocker and Luis Miguel. CD releases: *Short on Time & Money* (EP), *Mama Came to Sing* and *Seeing Red*.



**FELICIA DINWIDDIE** (*Joplinaire*, *Blues Singer U/S*) – NATIONAL THEATRE: *Hairspray* (Original Toronto Company). AT ZACH THEATRE: *Ragtime*, *Little Shop of Horrors*, *Jelly's Last Jam*, *Ain't Misbehavin'*, *Schoolhouse Rock*, *Blues in the Night*, *The Gospel at Colonus*, *Das Barbecü*, *Beehive* ('91-'98 & '03), *Dreamgirls* ('95 & '97), *Rockin' Christmas Party* ('93-'03, '09), *Falsettos*, *Nonsense* and *Once on This Island*. REGIONAL THEATRE: *Giant Steps "An Urban Musical"* (Texas Musical Theatre Workshop), *The Good Times Are Killing Me* (Austin Theatre for Youth), *Beehive* (Downstairs Cabaret Theatre, Rochester, NY), *Little Shop of Horrors* (Broadway Austin), *Once On This Island* (Mill Mountain Theatre, Roanoke, VA) and *Big River* (FUMC). RADIO/TV: "Oprah Winfrey" in an episode of *Jimmy Kimmel Live!*, *Stories of the E.R.*, *Strong Medicine*, *Boston Public*, *Scrubs*, 50-Off Store commercial and other industrials for Ink Productions. OTHER: B. Iden Payne Award for "Featured Actress in a Musical" (*Dreamgirls*) and "Outstanding Lead Actress in a Musical" (*Ain't Misbehavin'*).



**CARI HUTSON\*** (*Joplinaire*, *Janis Understudy*) – joins ZACH Theatre for the first time with this production. THEATRE: *Anything Goes* (Reno Sweeney) and *Hair* (Featured Vocalist) at Austin Community College, and *Blithe Spirit* (Mrs. Bradman) and the touring children's production *Emperor Toad*, *Queen Butterfly* at Southwest Texas State University. TV: *Spec's Wine & Spirits* (radio, soundtrack and TV commercial). OTHER CREDITS: Texas blues, rock singer and songwriter; *Austin Chronicle* Top 10 Best New Band.



**TRICKY JONES** (*Lead Joplinaire*) – AT ZACH THEATRE: *The Drowsy Chaperone*; *Caroline, or Change*; *Porgy and Bess*; *The Rocky Horror Show*; *Crowns* and *Hair*. OFF BROADWAY: *Hair* at Theatre Row in The Acorn Theatre. OTHER THEATRE: *Amphibians* at The Blue Theatre, *I Love My Dead Gay Son* at The Off Center, *Children of Eden* at St. Matthews Episcopal Church and *Jesus Christ Superstar* at The Paramount Theatre in Austin; *Sweet Charity* at The Town and Country Theatre in Houston. ADDITIONAL CREDITS: Sings for the bands Jesse Vain and The Happy Hour Holy Movement, Rooster Jenkins and Mojo Queen.



**TIFFANY MANN\*** (*Blues Singer*) – AT ZACH THEATRE: *Ragtime*, *Spring Awakening*, *Hairspray*, *Rockin' Christmas Party* and *Caroline, or Change*. REGIONAL THEATRE: *The Color Purple* (Celite), *Joseph and the Amazing Technicolor Dreamcoat* and *Dividing the Estate* at Dallas Theater Center. OTHER THEATRE: *Big River*, *Chicago*, *Rent*, *Ain't Misbehavin'* and *Lucia di Lammermoor*.

\*Member of Actors' Equity Association, the union of professional actors and stage managers in the United States.

